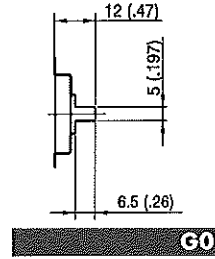
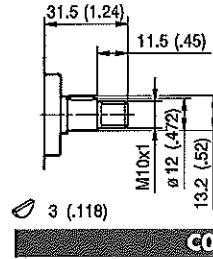
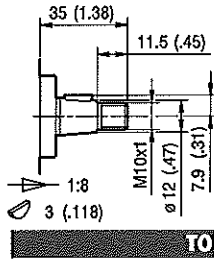
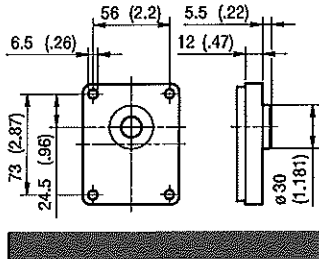


GHM1

FLANGE / FLANGES

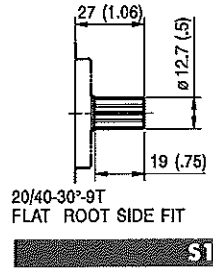
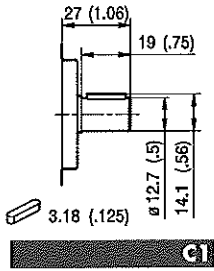
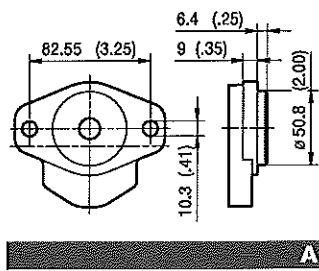
ALBERI / SHAFTS



T0
Coppia Max
Max Torque 100 Nm

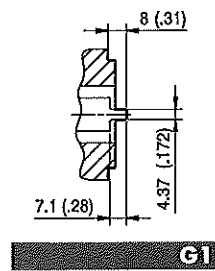
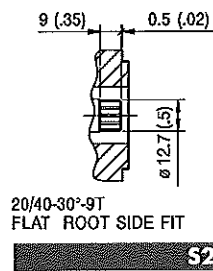
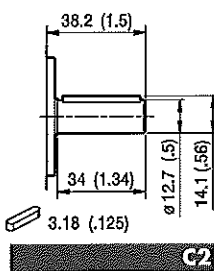
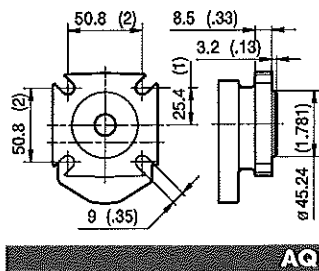
G0
Coppia Max
Max Torque 55 Nm

G0
Coppia Max
Max Torque 45 Nm



G1
Coppia Max
Max Torque 60 Nm

S1
20/40-30°-9T
FLAT ROOT SIDE FIT
Coppia Max
Max Torque 100 Nm



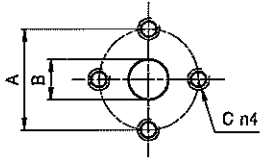
G2
Coppia Max
Max Torque 60 Nm

S2
20/40-30°-9T
FLAT ROOT SIDE FIT
Coppia Max
Max Torque 90 Nm

G1
Coppia Max
Max Torque 45 Nm

GHM1

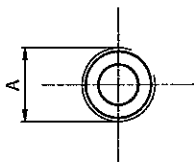
PORTE / PORTS



E

TIPO TYPE	MOTORE BIDIREZIONALE BI-DIRECTIONAL MOTOR			MOTORE MONODIREZIONALE MONO-DIRECTIONAL MOTOR		
	USCITA - ENTRATA OUTPUT - INPUT			ENTRATA INPUT		
	A	B	C	A	B	C
GHM1...4 ÷ GHM1...16	30	13	M6	30	13	M6

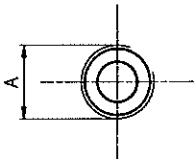
I valori delle coppie di serraggio delle viti presenti nel kit raccordo sono indicate a pag. 52 (capitolo accessori).
Tightening torques of the fittings screws are specified on page 52 (accessories section).



FG

TIPO TYPE	MOTORE BIDIREZIONALE BI-DIRECTIONAL MOTOR			MOTORE MONODIREZIONALE MONO-DIRECTIONAL MOTOR		
	USCITA - ENTRATA OUTPUT - INPUT			ENTRATA INPUT		
	A			A		
GHM1...4 ÷ GHM1...5	G1/2			G3/8		
GHM1...6 ÷ GHM1...16	G1/2			G1/2		

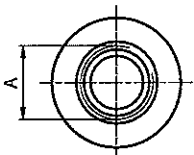
Raccordo G1/2 coppia di serraggio massima 50 Nm. Raccordo G3/8 coppia di serraggio massima 35 Nm.
Consigliamo di richiedere conferma al fornitore del raccordo.
Tightening torques for G1/2 fitting: 50 Nm. Tightening torques for G3/8 fitting: 35 Nm. Please check with the fittings suppliers.



FC

TIPO TYPE	MOTORE BIDIREZIONALE BI-DIRECTIONAL MOTOR			MOTORE MONODIREZIONALE MONO-DIRECTIONAL MOTOR		
	USCITA - ENTRATA OUTPUT - INPUT			ENTRATA INPUT		
	A			A		
GHM1...4 ÷ GHM1...16	Rc1/2			Rc1/2		

Raccordo Rc1/2 coppia di serraggio massima 50 Nm.
Consigliamo di richiedere conferma al fornitore del raccordo.
Tightening torques for Rc1/2 fitting: 50 Nm. Please check with the fittings suppliers.



STANDARD SAE J1926/1

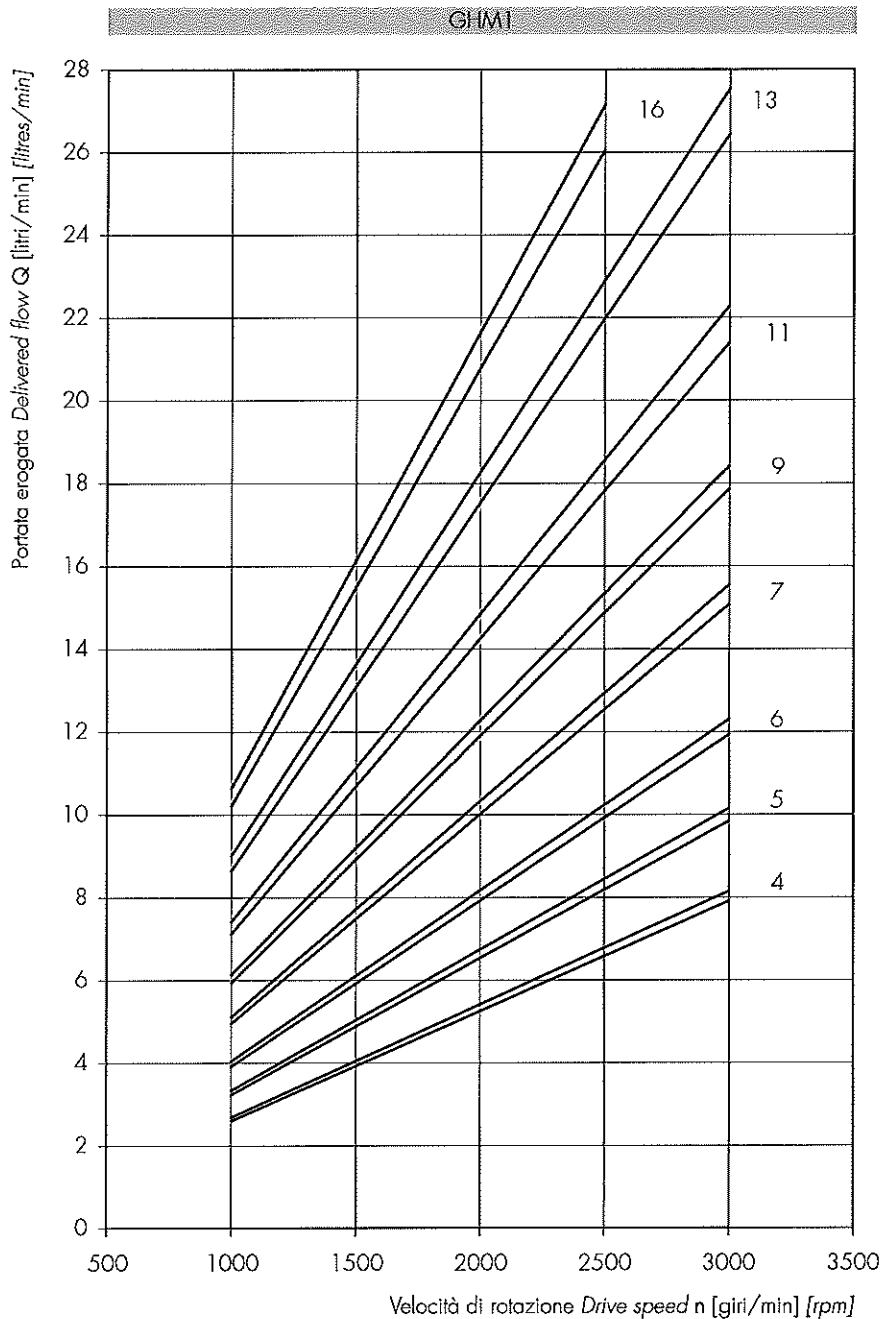
FA

TIPO TYPE	MOTORE BIDIREZIONALE BI-DIRECTIONAL MOTOR			MOTORE MONODIREZIONALE MONO-DIRECTIONAL MOTOR		
	USCITA - ENTRATA OUTPUT - INPUT			ENTRATA INPUT		
	A			A		
GHM1...4 ÷ GHM1...9	3/4-16 UNF			9/16-18 UNF		
GHM1...11 ÷ GHM1...16	7/8-14 UNF			3/4-16 UNF		

Raccordo 9/16-18 UNF coppia di serraggio massima 30 Nm. Raccordo 3/4-16 UNF coppia di serraggio massima 60 Nm.
Raccordo 7/8-14 UNF coppia di serraggio massima 70 Nm. Consigliamo di richiedere conferma al fornitore del raccordo.
Tightening torques for 9/16-18 UNF fitting: 30 Nm. Tightening torques for 3/4-16 UNF fitting: 60 Nm.
Tightening torques for 7/8-14 UNF fitting: 70 Nm. Please check with the fittings suppliers.

GHM1 CURVE CARATTERISTICHE

GHM1 PERFORMANCE CURVES



Le curve sono state ottenute alla temperatura di 50°C, utilizzando olio con viscosità 30 cSt alle pressioni sotto riportate.

Each curve has been obtained at 50°C, using oil with viscosity 30 cSt at these pressure.

4 | 25-300 bar

7 | 25-270 bar

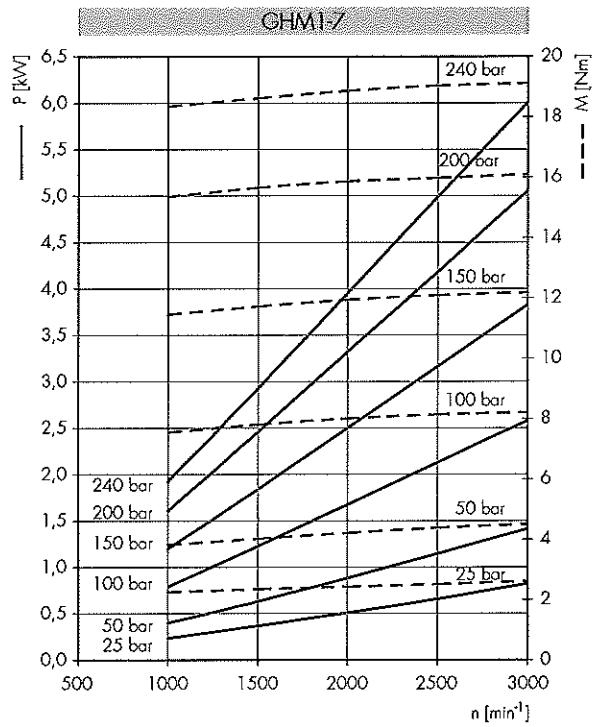
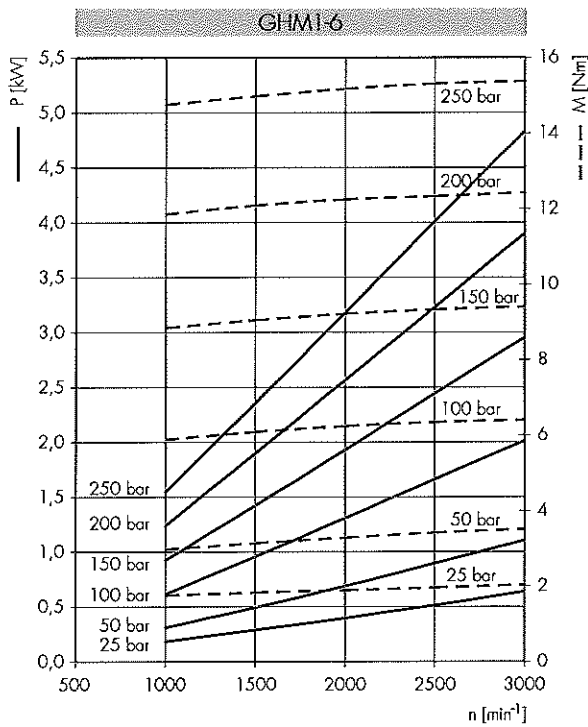
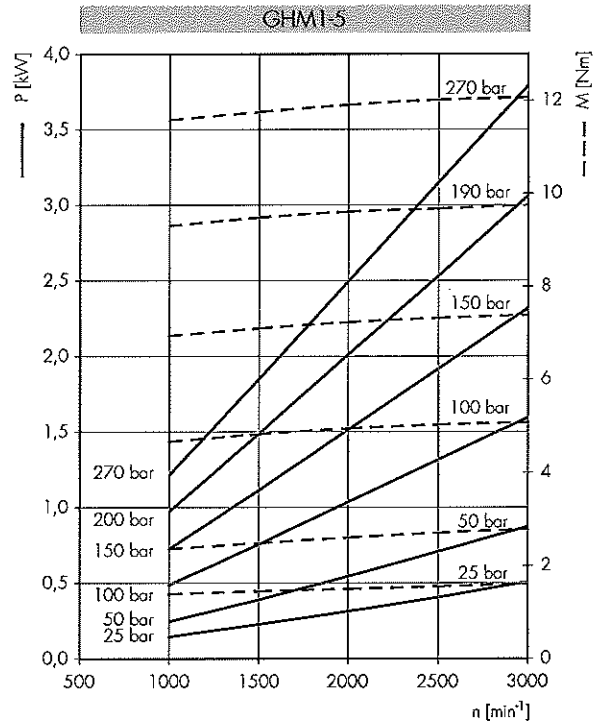
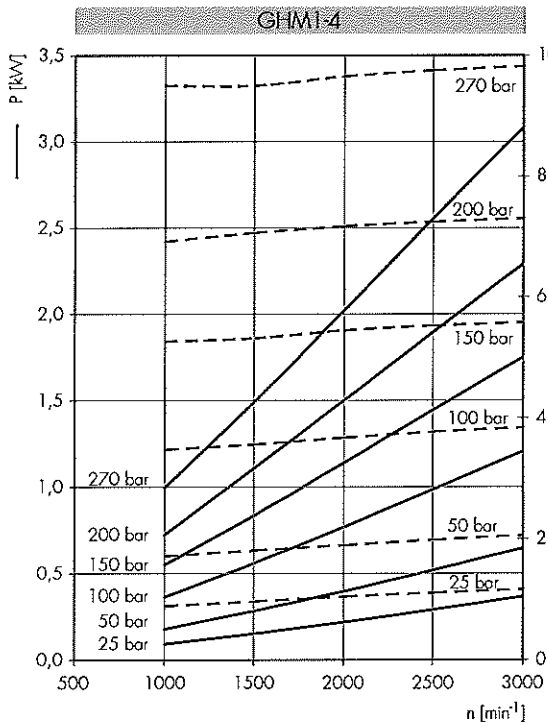
13 | 25-190 bar

5 | 25-280 bar

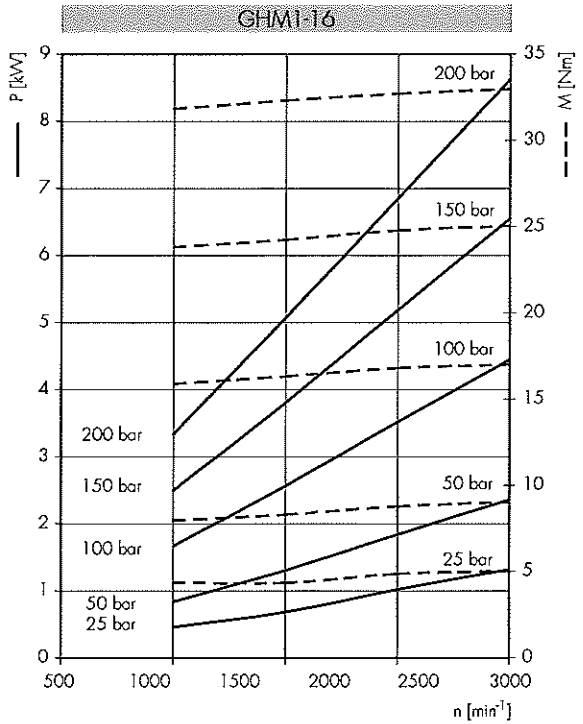
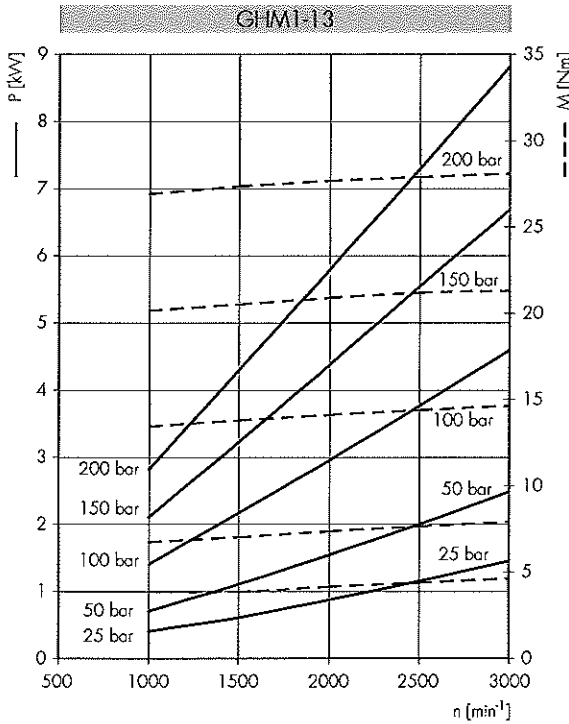
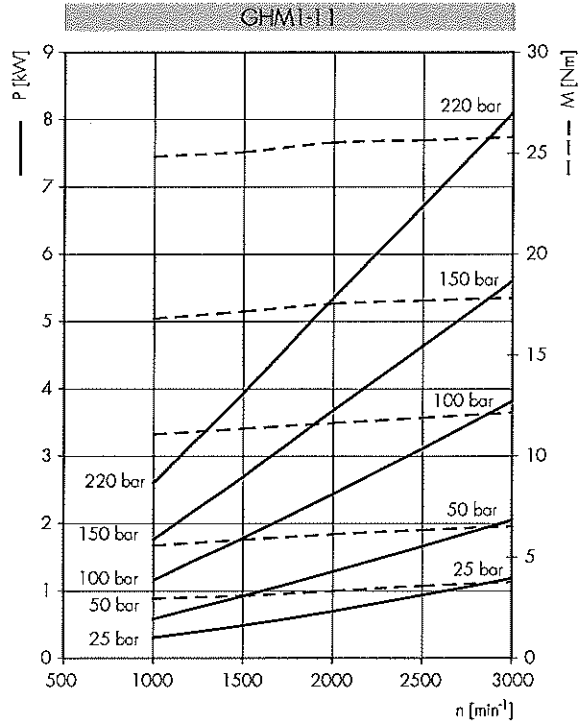
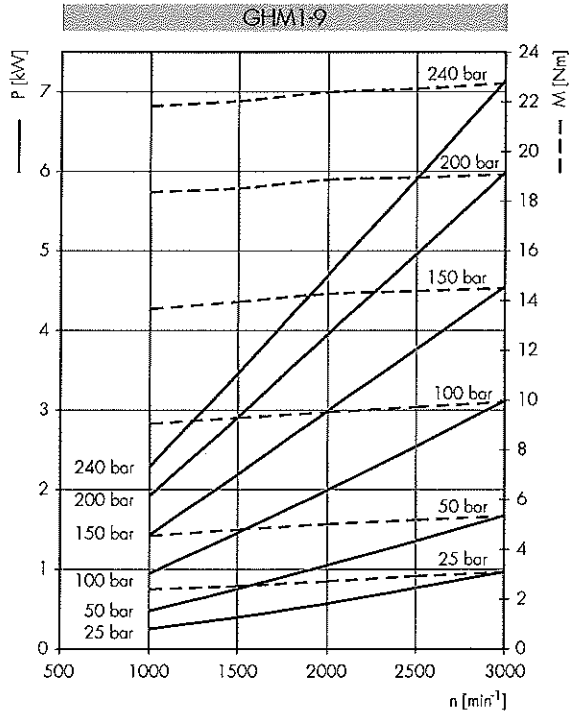
11 | 25-230 bar

16 | 25-170 bar

Potenza erogata Delivered power P [kW]
 Momento torcente erogato Delivered torque M [Nm]
 Velocità di rotazione Drive speed n [giri/min] [rpm]



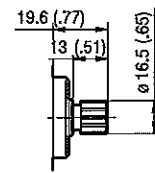
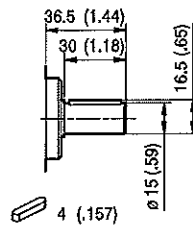
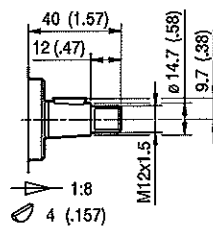
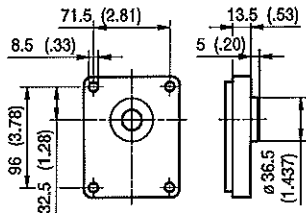
Potenza erogata *Delivered power* P [kW]
 Momento torcente erogato *Delivered torque* M [Nm]
 Velocità di rotazione *Drive speed* n [giri/min] [rpm]



GHM2

FLANGE / FLANGES

ALBERI / SHAFTS

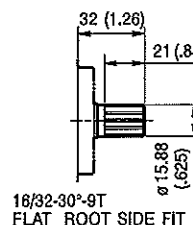
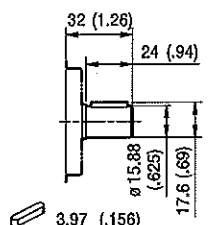
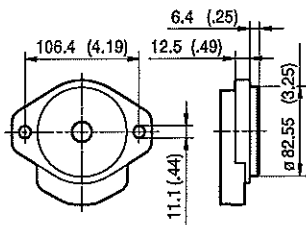


DIN 5482
B17x14

T0
Coppia Max 200 Nm
Max Torque

C0
Coppia Max 135 Nm
Max Torque

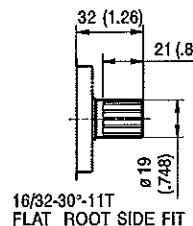
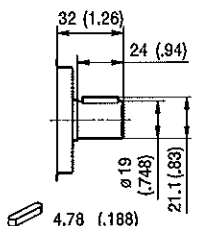
S0
Coppia Max 140 Nm
Max Torque



16/32-30°-9T
FLAT ROOT SIDE FIT

C1
Coppia Max 140 Nm
Max Torque

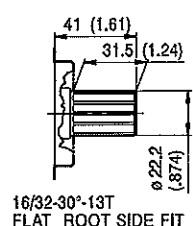
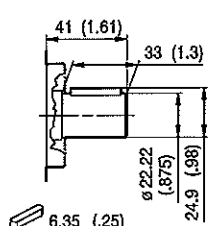
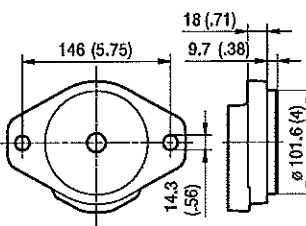
S1
Coppia Max 185 Nm
Max Torque



16/32-30°-11T
FLAT ROOT SIDE FIT

C2
Coppia Max 160 Nm
Max Torque

S2
Coppia Max 200 Nm
Max Torque



16/32-30°-13T
FLAT ROOT SIDE FIT

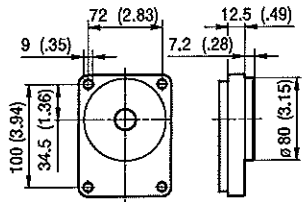
C3
Coppia Max 140 Nm
Max Torque

S5
Coppia Max 140 Nm
Max Torque

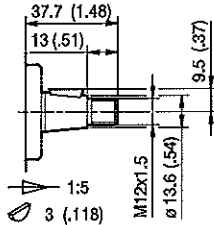
GHM2

FLANGE / FLANGES

ALBERI / SHAFTS

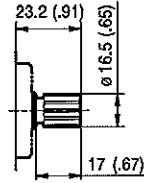


BK1



T1

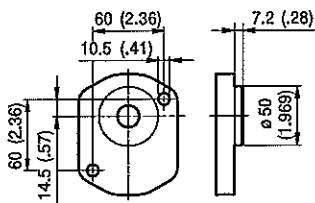
Coppia Max
Max Torque 180 Nm



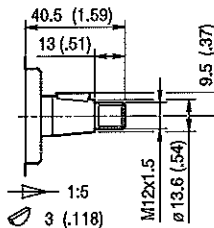
S3

DIN 5482
B17x14

Coppia Max
Max Torque 140 Nm

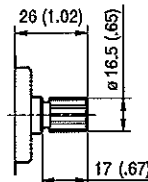


BK2



T2

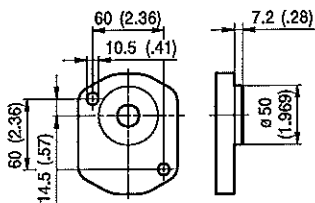
Coppia Max
Max Torque 180 Nm



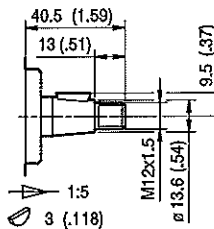
S4

DIN 5482
B17x14

Coppia Max
Max Torque 140 Nm

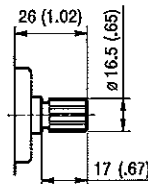


BK4



T2

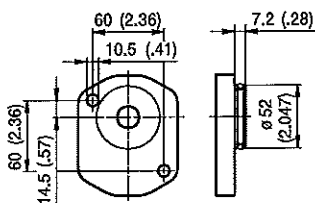
Coppia Max
Max Torque 180 Nm



S4

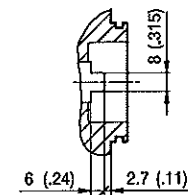
DIN 5482
B17x14

Coppia Max
Max Torque 140 Nm



OR 3181

BK7

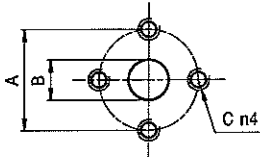


G0

Coppia Max
Max Torque 100 Nm

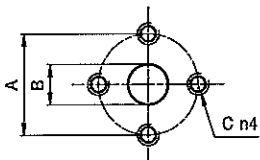
GHM2

PORTE / PORTS



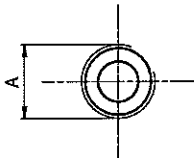
TIPO TYPE	MOTORE BIDIREZIONALE BI-DIRECTIONAL MOTOR			MOTORE MONODIREZIONALE MONO-DIRECTIONAL MOTOR		
	USCITA - ENTRATA OUTPUT - INPUT			ENTRATA INPUT		
	A	B	C	A	B	C
GHM2...6 - GHM2...9	30	13	M6	30	13	M6
GHM2...10 - GHM2...13	40	13	M8	40	13	M8
GHM2...16 - GHM2...25	40	19	M8	40	13	M8
GHM2...30 - GHM2...40	40	19	M8	40	19	M8

I valori delle coppie di serraggio delle viti presenti nel kit ricordo sono indicate a pag 52 (capitolo accessori).
Tightening torques of the fittings screws are specified on page 52 (accessories section).



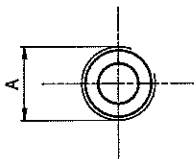
TIPO TYPE	MOTORE BIDIREZIONALE BI-DIRECTIONAL MOTOR			MOTORE MONODIREZIONALE MONO-DIRECTIONAL MOTOR		
	USCITA - ENTRATA OUTPUT - INPUT			ENTRATA INPUT		
	A	B	C	A	B	C
GHM2...6 - GHM2...13	30	13	M6	30	13	M6
GHM2...16 - GHM2...40	40	19	M8	30	13	M6

I valori delle coppie di serraggio delle viti presenti nel kit ricordo sono indicate a pag 52 (capitolo accessori).
Tightening torques of the fittings screws are specified on page 52 (accessories section).



TIPO TYPE	MOTORE BIDIREZIONALE BI-DIRECTIONAL MOTOR			MOTORE MONODIREZIONALE MONO-DIRECTIONAL MOTOR		
	USCITA - ENTRATA OUTPUT - INPUT			ENTRATA INPUT		
	A			A		
GHM2...6 - GHM2...16	G1/2			G1/2		
GHM2...20 - GHM2...40	G3/4			G1/2		

Raccordo G1/2 coppia di serraggio massima 50 Nm. Raccordo G3/4 coppia di serraggio massima 60 Nm.
Consigliamo di richiedere conferma al fornitore del raccordo.
Tightening torques for G1/2 fitting: 50 Nm. Tightening torques for G3/4 fitting: 60 Nm. Please check with the fittings suppliers.

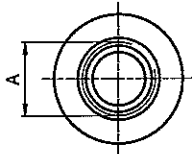


TIPO TYPE	MOTORE BIDIREZIONALE BI-DIRECTIONAL MOTOR			MOTORE MONODIREZIONALE MONO-DIRECTIONAL MOTOR		
	USCITA - ENTRATA OUTPUT - INPUT			ENTRATA INPUT		
	A			A		
GHM2...6 - GHM2...16	Rc1/2			Rc1/2		
GHM2...20 - GHM2...40	Rc3/4			Rc1/2		

Raccordo Rc1/2 coppia di serraggio massima 50 Nm. Raccordo Rc3/4 coppia di serraggio massima 60 Nm.
Consigliamo di richiedere conferma al fornitore del raccordo.
Tightening torques for Rc1/2 fitting: 50 Nm. Tightening torques for Rc3/4 fitting: 60 Nm. Please check with the fittings suppliers.

GHM2

PORTE / PORTS

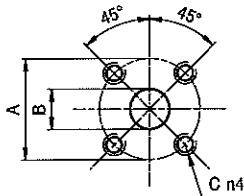


STANDARD SAE J1926/1

FA

TIPO TYPE	MOTORE BIDIREZIONALE BI-DIRECTIONAL MOTOR	MOTORE MONODIREZIONALE MONO-DIRECTIONAL MOTOR
	USCITA - ENTRATA OUTPUT - INPUT	ENTRATA INPUT
	A	
GHM2...6 - GHM2...40	1 1/16-12 UNF	7/8-14 UNF

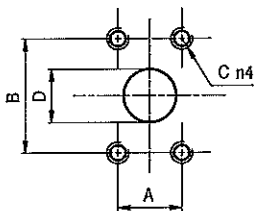
Raccordo 7/8-14 UNF coppia di serraggio massima 70 Nm. Raccordo 1 1/16-12 UNF coppia di serraggio massima 70 Nm.
 Consigliamo di richiedere conferma al fornitore del raccordo.
 Tightening torques for 7/8-14 UNF fitting: 70 Nm. Tightening torques for 1 1/16-12 UNF fitting: 70 Nm.
 Please check with the fittings suppliers.



D

TIPO TYPE	MOTORE BIDIREZIONALE BI-DIRECTIONAL MOTOR			MOTORE MONODIREZIONALE MONO-DIRECTIONAL MOTOR		
	USCITA - ENTRATA OUTPUT - INPUT			ENTRATA INPUT		
	A	B	C	A	B	C
GHM2...6 - GHM2...12	40	15	M6	35	15	M6
GHM2...13 - GHM2...40	40	20	M6	35	15	M6

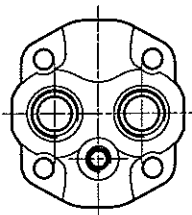
I valori delle coppie di serraggio delle viti presenti nel kit raccordo sono indicate a pag 52 (capitolo accessori).
 Tightening torques of the fittings screws are specified on page 52 (accessories section).



A

TIPO TYPE	MOTORE BIDIREZIONALE BI-DIRECTIONAL MOTOR				MOTORE MONODIREZIONALE MONO-DIRECTIONAL MOTOR			
	USCITA - ENTRATA OUTPUT - INPUT				ENTRATA INPUT			
	A	B	C	D	A	B	C	D
GHM2...6 - GHM2...22	17,48	38,1	5/16-18 UNC	13	17,48	38,1	5/16-18 UNC	13
GHM2...25	22,23	47,63	3/8-16 UNC	19	17,48	38,1	5/16-18 UNC	13
GHM2...30 - GHM2...40	22,23	47,63	3/8-16 UNC	19	22,23	47,63	3/8-16 UNC	19

I valori delle coppie di serraggio delle viti presenti nel kit raccordo sono indicate a pag 52 (capitolo accessori).
 Tightening torques of the fittings screws are specified on page 52 (accessories section).



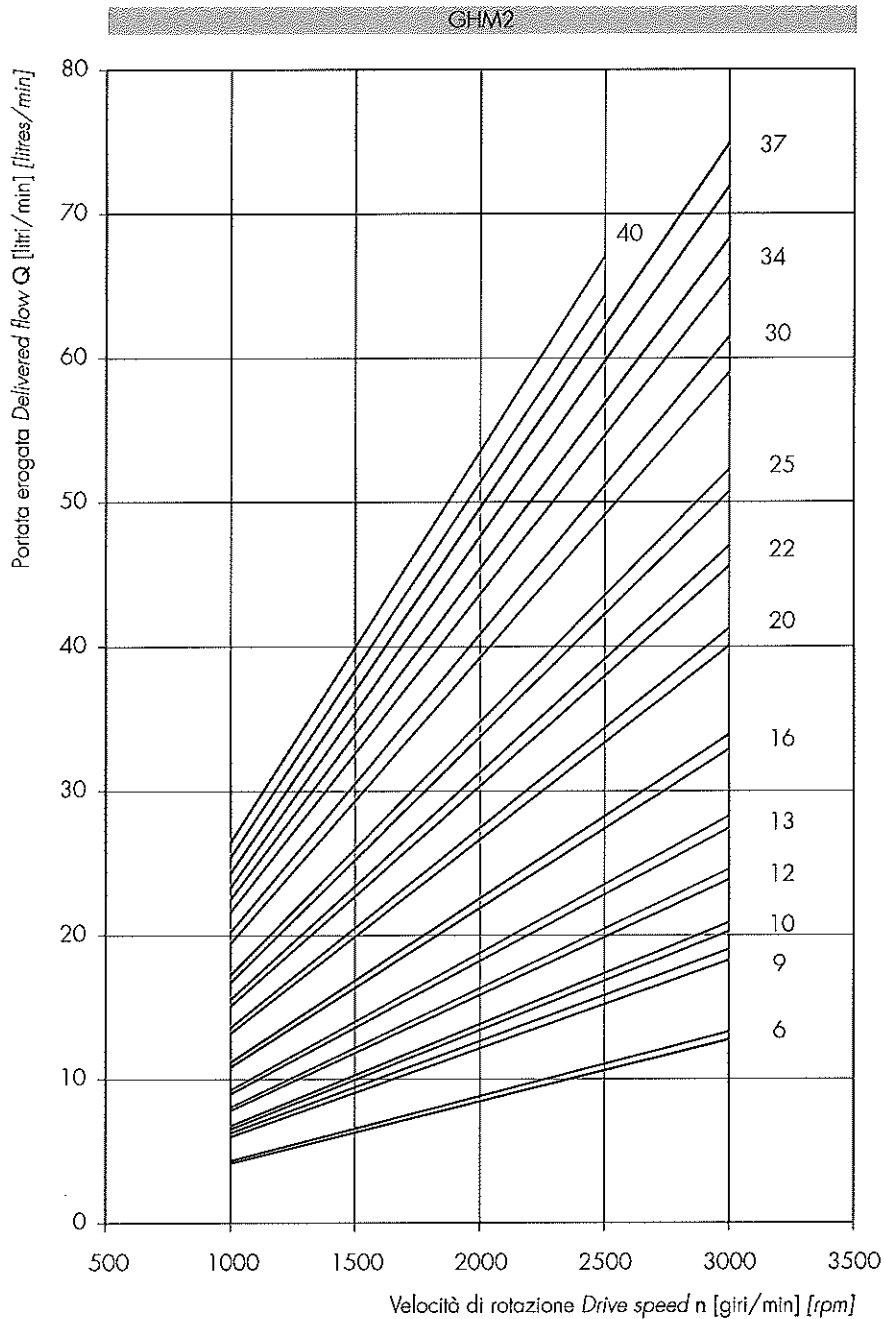
KA

Opzione KA
 Le porte di aspirazione e mandata sono posizionate sul coperchio.
 Sono disponibili le versioni FG e FA (per le dimensioni, vedi le relative tabelle).

KA Option
 Outlet and Inlet Ports are located in the cover.
 FG and FA versions are available (for details about dimensions, please refer to the specific tables).

GHM2 CURVE CARATTERISTICHE

GHM2 PERFORMANCE CURVES



Le curve sono state ottenute alla temperatura di 50°C, utilizzando olio con viscosità 30 cSt alle pressioni sotto riportate.

Each curve has been obtained at 50°C, using oil with viscosity 30 cSt at these pressure.

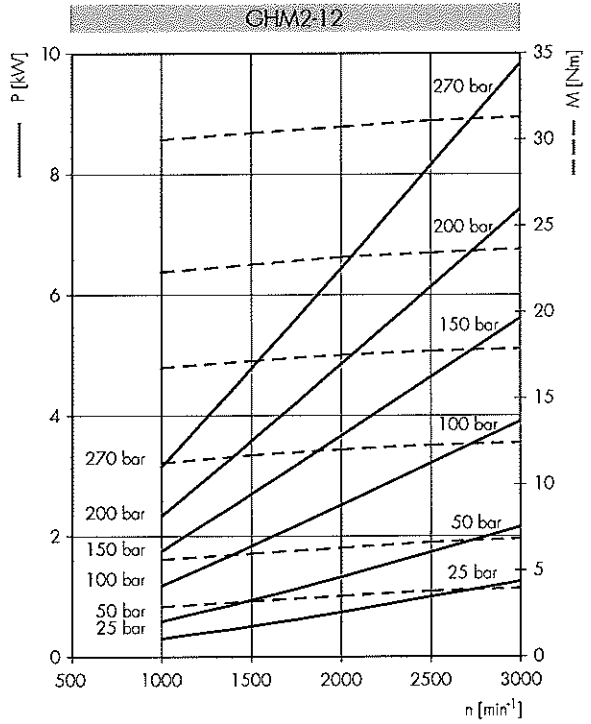
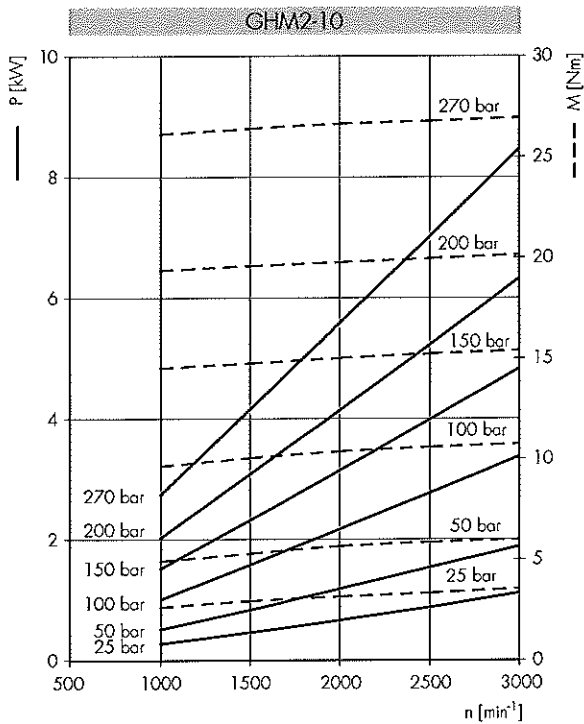
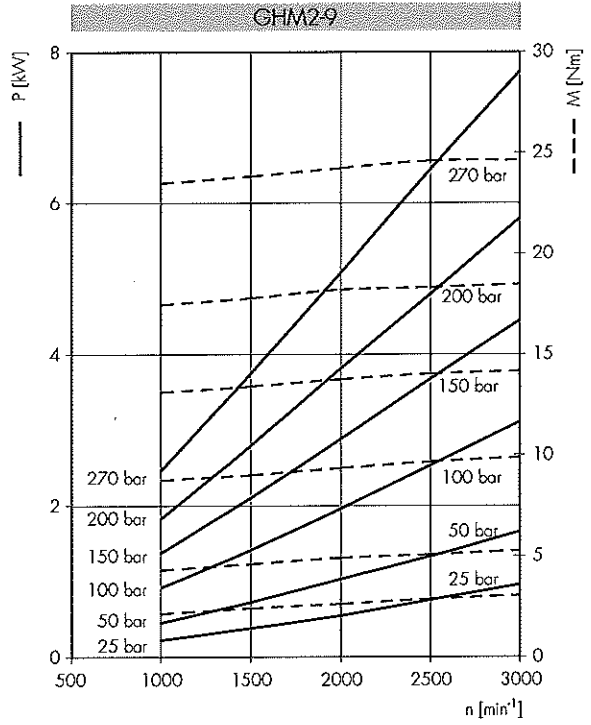
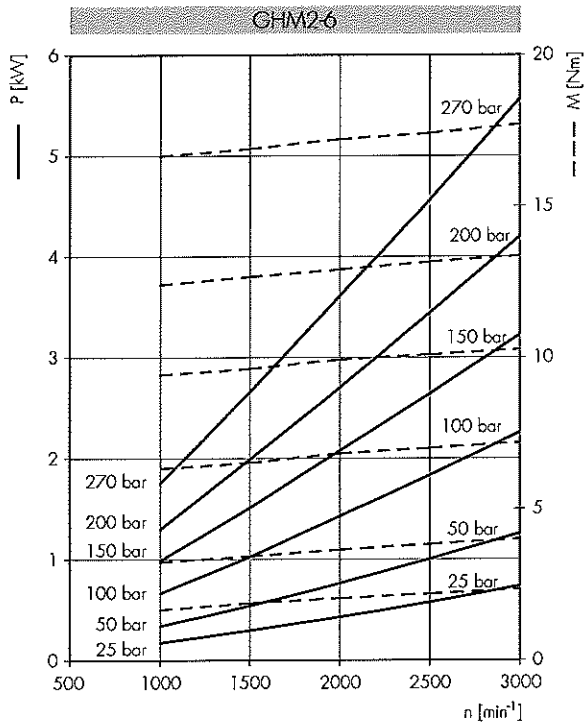
6
9
10 — 25-290 bar
12
13
16

20
22 — 25-270 bar
25
30 — 25-240 bar
34

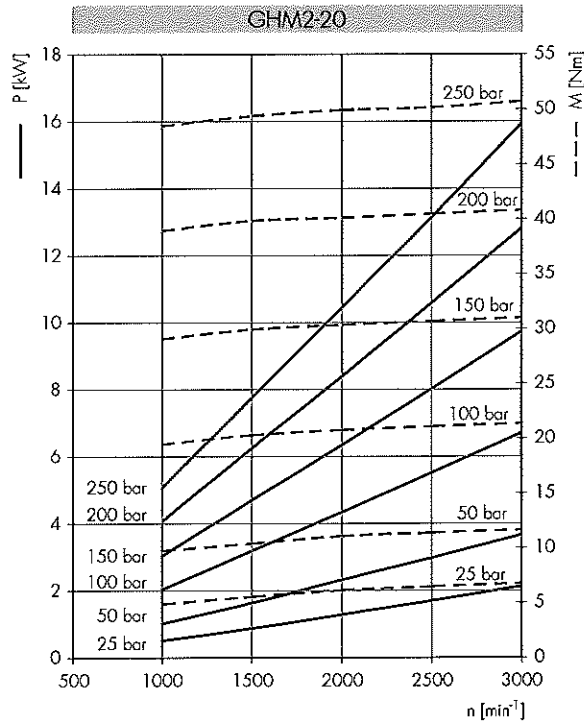
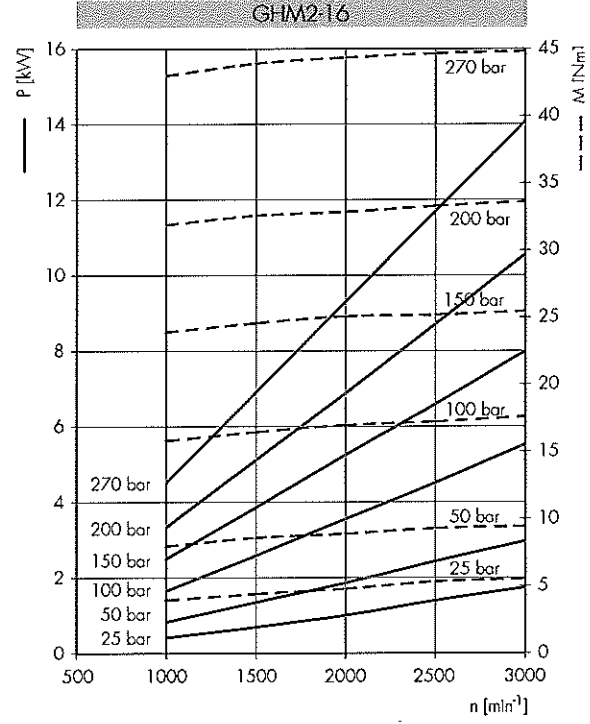
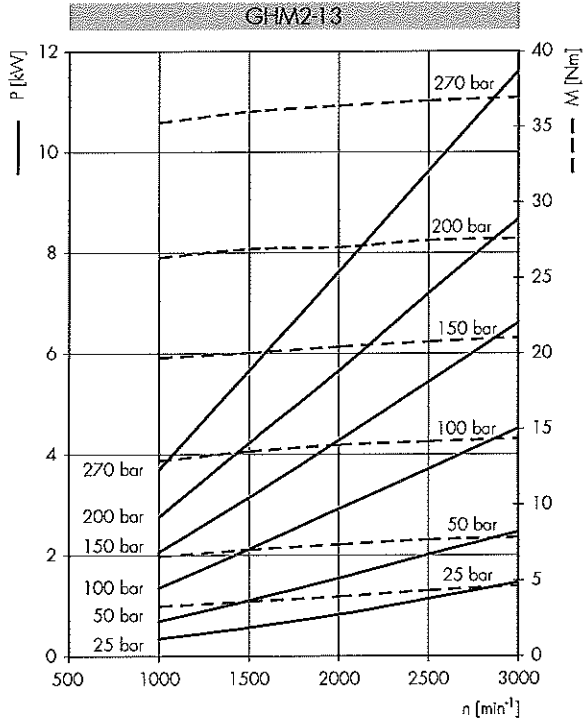
37 — 25-230 bar

40 — 25-210 bar

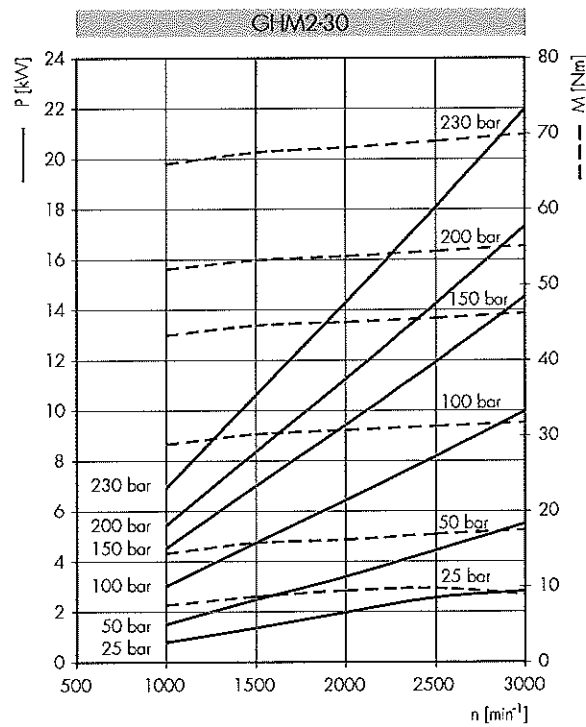
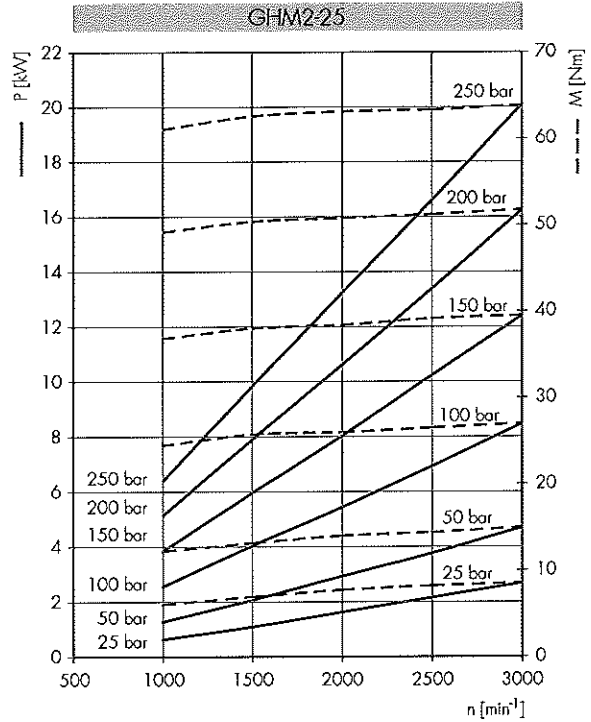
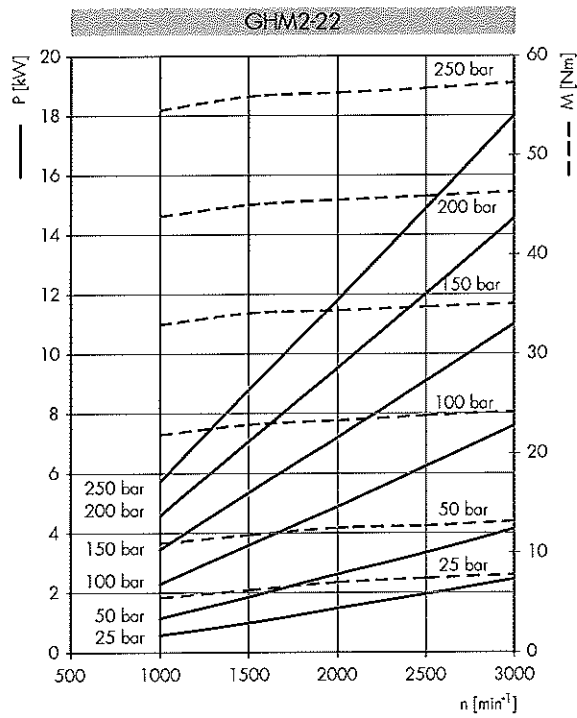
Potenza erogata *Delivered power* P [kW]
 Momento torcente erogato *Delivered torque* M [Nm]
 Velocità di rotazione *Drive speed* n [giri/min] [rpm]



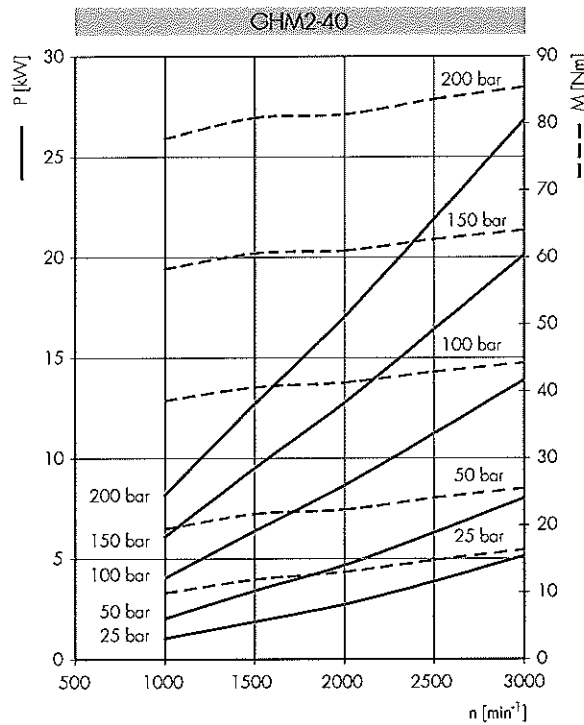
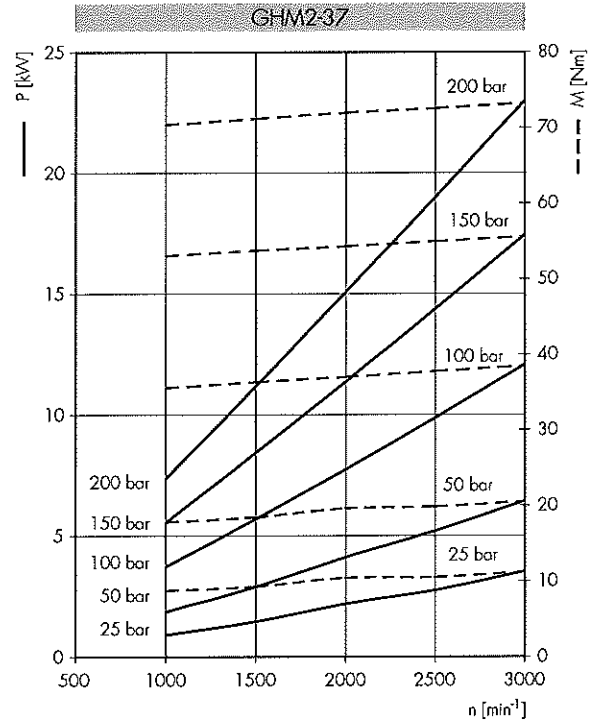
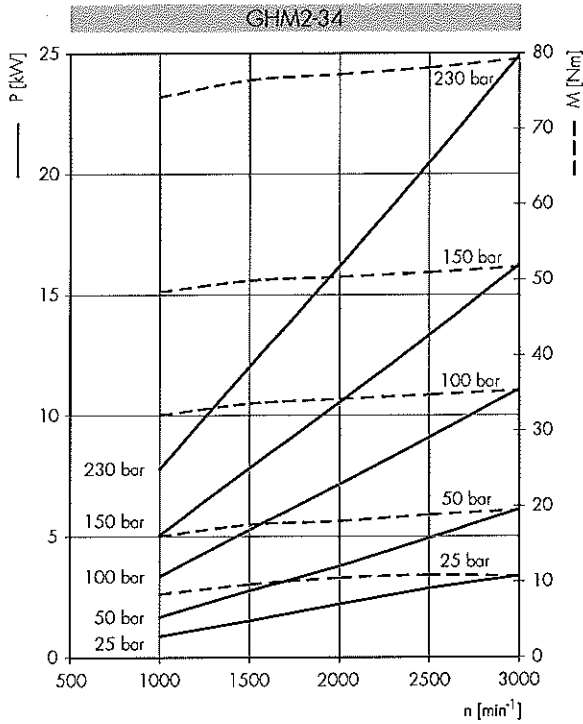
Potenza erogata *Delivered power* P [kW]
 Momento torcente erogato *Delivered torque* M [Nm]
 Velocità di rotazione *Drive speed* n [giri/min] [rpm]



Potenza erogata *Delivered power* P [kW]
 Momento torcente erogato *Delivered torque* M [Nm]
 Velocità di rotazione *Drive speed* n [giri/min] [rpm]



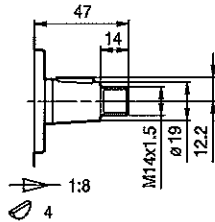
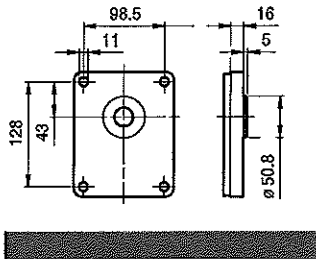
Potenza erogata *Delivered power* P [kW]
 Momento torcente erogato *Delivered torque* M [Nm]
 Velocità di rotazione *Drive speed* n [giri/min] [rpm]



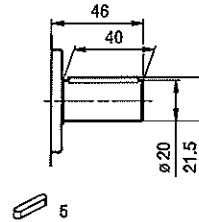
GHM3

FLANGE / FLANGES

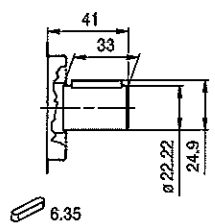
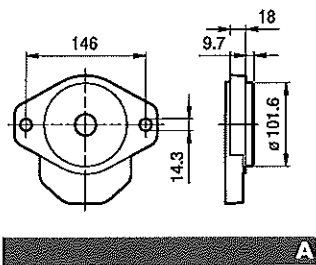
ALBERI / SHAFTS



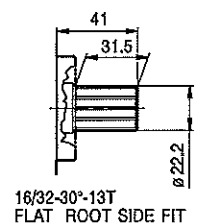
Coppia Max
Max Torque 300 Nm



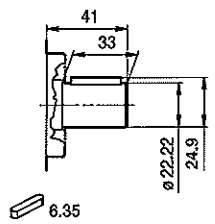
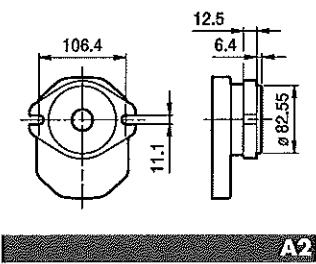
Coppia Max
Max Torque 350 Nm



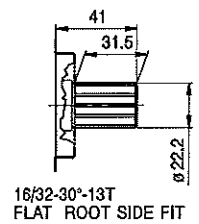
Coppia Max
Max Torque 450 Nm



16/32-30°-13T
FLAT ROOT SIDE FIT
Coppia Max
Max Torque 600 Nm



Coppia Max
Max Torque 450 Nm

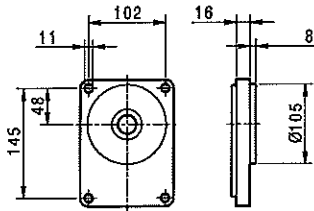


16/32-30°-13T
FLAT ROOT SIDE FIT
Coppia Max
Max Torque 600 Nm

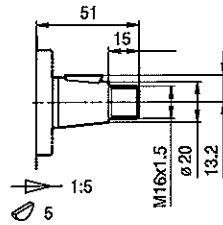
GHM3

FLANGE / FLANGES

ALBERI / SHAFTS

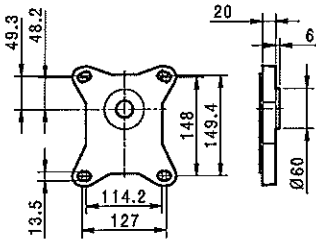


BK1

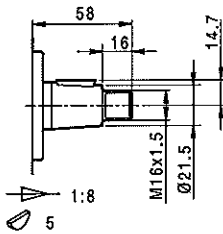


T1

Coppia Max
Max Torque 300 Nm



5

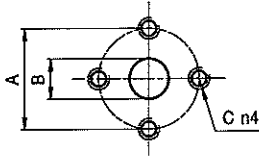


T2

Coppia Max
Max Torque 400 Nm

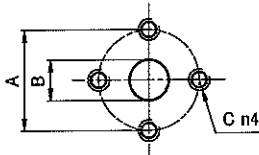
GHM3

PORTE / PORTS


E

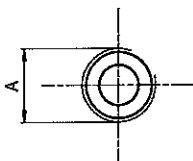
TIPO TYPE	MOTORE BIDIREZIONALE BI-DIRECTIONAL MOTOR			MOTORE MONODIREZIONALE MONO-DIRECTIONAL MOTOR		
	USCITA - ENTRATA OUTPUT - INPUT			ENTRATA INPUT		
	A	B	C	A	B	C
GHM3...33 = GHM3...60	56	27	M10	56	19	M10
GHM3...66	51	27	M10	51	27	M10
GHM3...80	56	27	M10	56	27	M10
GHM3...94 = GHM3...135	62	33	M10	51	27	M10

I valori della coppie di serraggio delle viti presenti nel kit raccordo sono indicate a pag 52 (capitolo accessori).
 Tightening torques of the fittings screws are specified on page 52 (accessories section).


EP

TIPO TYPE	MOTORE BIDIREZIONALE BI-DIRECTIONAL MOTOR			MOTORE MONODIREZIONALE MONO-DIRECTIONAL MOTOR		
	USCITA - ENTRATA OUTPUT - INPUT			ENTRATA INPUT		
	A	B	C	A	B	C
GHM3...33	40	19	M8	40	19	M8
GHM3...40 = GHM3...80	51	27	M10	40	19	M8

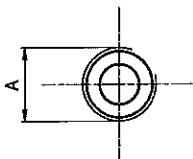
I valori delle coppie di serraggio delle viti presenti nel kit raccordo sono indicate a pag 52 (capitolo accessori).
 Tightening torques of the fittings screws are specified on page 52 (accessories section).


FG

TIPO TYPE	MOTORE BIDIREZIONALE BI-DIRECTIONAL MOTOR		MOTORE MONODIREZIONALE MONO-DIRECTIONAL MOTOR	
	USCITA - ENTRATA OUTPUT - INPUT		ENTRATA INPUT	
	A		A	
GHM3...33	G3/4		G3/4	
GHM3...40 = GHM3...60	G1		G3/4	
GHM3...66 = GHM3...94	G1 1/4		G1	
GHM3...110 = GHM3...135	G1 1/2		G1 1/4	

Raccordo G3/4 coppia di serraggio massima 60 Nm. Raccordo G1 coppia di serraggio massima 70 Nm. Raccordo G1 1/4 coppia di serraggio massima 80 Nm. Raccordo G1 1/2 coppia di serraggio massima 90 Nm. Consigliamo di richiedere conferma al fornitore del raccordo.

Tightening torques for G3/4 fitting: 60 Nm. Tightening torques for G1 fitting: 70 Nm. Tightening torques for G1 1/4 fitting: 80 Nm. Tightening torques for G1 1/2 fitting: 90 Nm. Please check with the fittings suppliers.


FC

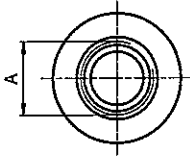
TIPO TYPE	MOTORE BIDIREZIONALE BI-DIRECTIONAL MOTOR		MOTORE MONODIREZIONALE MONO-DIRECTIONAL MOTOR	
	USCITA - ENTRATA OUTPUT - INPUT		ENTRATA INPUT	
	A		A	
GHM3...33	Rc3/4		Rc3/4	
GHM3...40 = GHM3...60	Rc1		Rc3/4	
GHM3...66 = GHM3...94	Rc1 1/4		Rc1	
GHM3...110 = GHM3...135	Rc1 1/2		Rc1 1/4	

Raccordo Rc3/4 coppia di serraggio massima 60 Nm. Raccordo Rc1 coppia di serraggio massima 70 Nm. Raccordo Rc1 1/4 coppia di serraggio massima 80 Nm. Raccordo Rc1 1/2 coppia di serraggio massima 90 Nm. Consigliamo di richiedere conferma al fornitore del raccordo.

Tightening torques for Rc3/4 fitting: 60 Nm. Tightening torques for Rc1 fitting: 70 Nm. Tightening torques for Rc1 1/4 fitting: 80 Nm. Tightening torques for Rc1 1/2 fitting: 90 Nm. Please check with the fittings suppliers.

GHM3

PORTE / PORTS



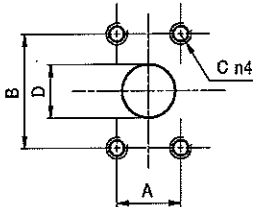
STANDARD SAE J1926/1

FA

TIPO TYPE	MOTORE BIDIREZIONALE BIDIRECTIONAL MOTOR	MOTORE MONODIREZIONALE MONO-DIRECTIONAL MOTOR
	USCITA - ENTRATA OUTPUT - INPUT	ENTRATA INPUT
	A	A
GHM3...33 ÷ GHM3...50	1 5/16-12 UNF	1 1/16-12 UNF
GHM3...60 ÷ GHM3...80	1 5/8-12 UNF	1 1/16-12 UNF
GHM3...94 ÷ GHM3...135	1 7/8-12 UNF	1 5/16-12 UNF

Raccordo 1 1/16-12 UNF coppia di serraggio massima 70 Nm. Raccordo 1 5/16-12 UNF coppia di serraggio massima 80 Nm.
Raccordo 1 5/8-12 UNF coppia di serraggio massima 80 Nm. Raccordo 1 7/8-12 UNF coppia di serraggio massima 80 Nm.
Consigliamo di richiedere conferma al fornitore del raccordo.

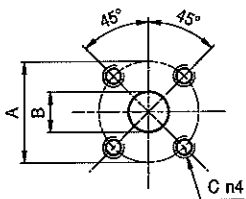
Tightening torques for 1 1/16-12 UNF fitting: 70 Nm. Tightening torques for 1 5/16-12 UNF fitting: 80 Nm. Tightening torques for 1 5/8-12 UNF fitting: 80 Nm. Tightening torques for 1 7/8-12 UNF fitting: 80 Nm. Please check with the fittings suppliers.



A

TIPO TYPE	MOTORE BIDIREZIONALE BIDIRECTIONAL MOTOR				MOTORE MONODIREZIONALE MONO-DIRECTIONAL MOTOR			
	USCITA - ENTRATA OUTPUT - INPUT				ENTRATA INPUT			
	A	B	C	D	A	B	C	D
GHM3...33 ÷ GHM3...80	26,19	52,37	3/8-16 UNC	27	22,23	47,63	3/8-16 UNC	19
GHM3...94 ÷ GHM3...135	30,2	58,7	7/16-14 UNC	33	26,19	52,37	3/8-16 UNC	27

I valori delle coppie di serraggio delle viti presenti nel kit raccordo sono indicate a pag 52 (capitolo accessori).
Tightening torques of the fittings screws are specified on page 52 (accessories section).



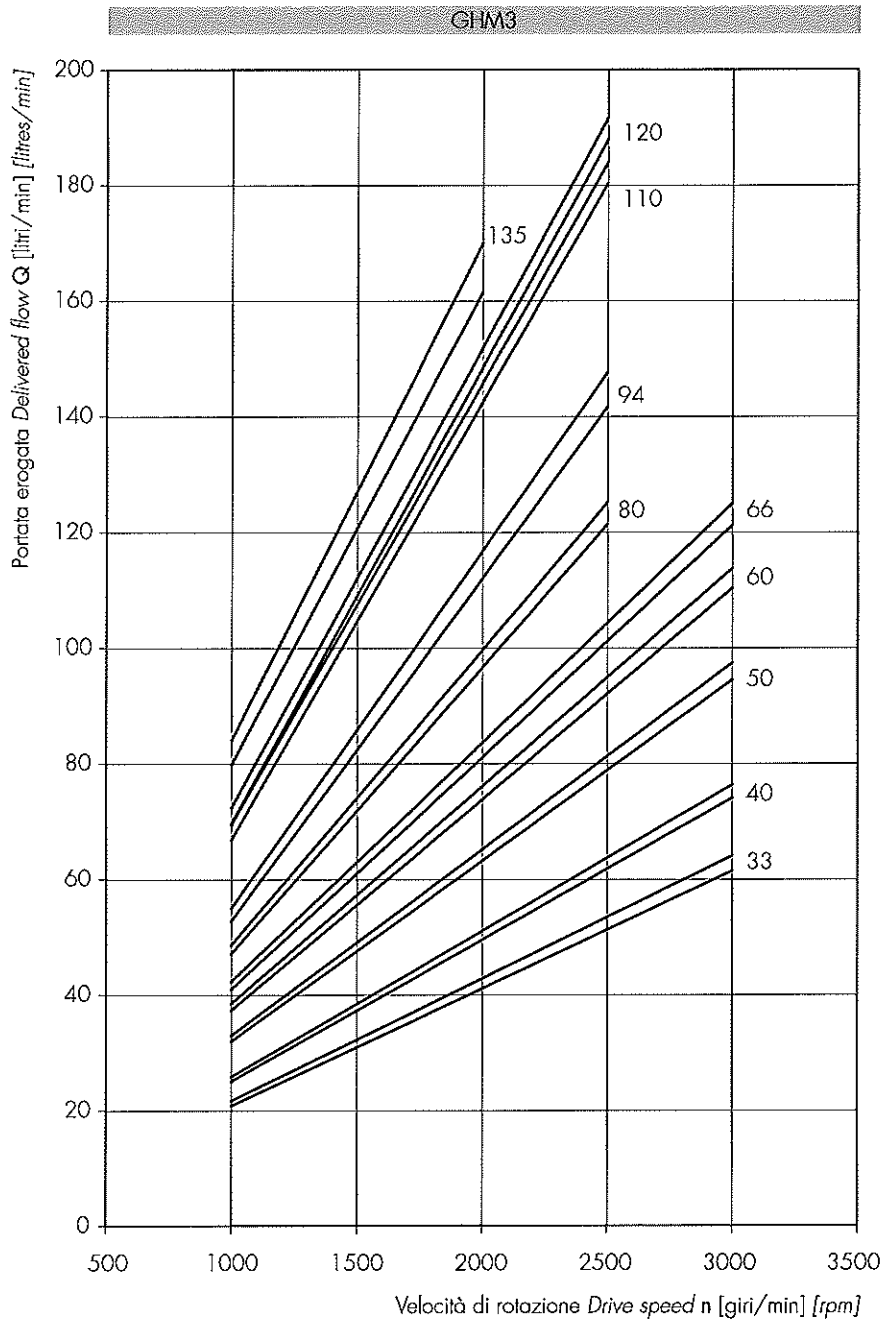
D

TIPO TYPE	MOTORE BIDIREZIONALE BIDIRECTIONAL MOTOR			MOTORE MONODIREZIONALE MONO-DIRECTIONAL MOTOR		
	USCITA - ENTRATA OUTPUT - INPUT			ENTRATA INPUT		
	A	B	C	A	B	C
GHM3...33 ÷ GHM3...80	55	27	M8	55	19	M8

I valori delle coppie di serraggio delle viti presenti nel kit raccordo sono indicate a pag 52 (capitolo accessori).
Tightening torques of the fittings screws are specified on page 52 (accessories section).

GHM3 CURVE CARATTERISTICHE

GHM3 PERFORMANCE CURVES



Le curve sono state ottenute alla temperatura di 50°C, utilizzando olio con viscosità 30 cSt alle pressioni sotto riportate.

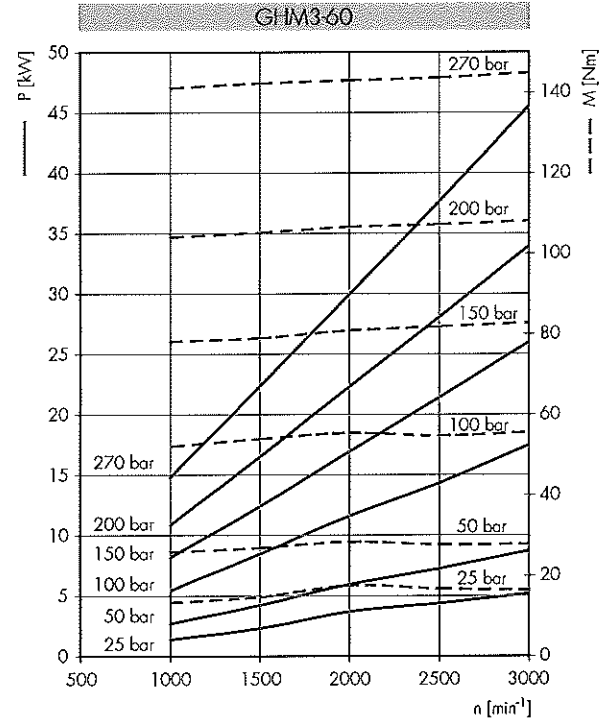
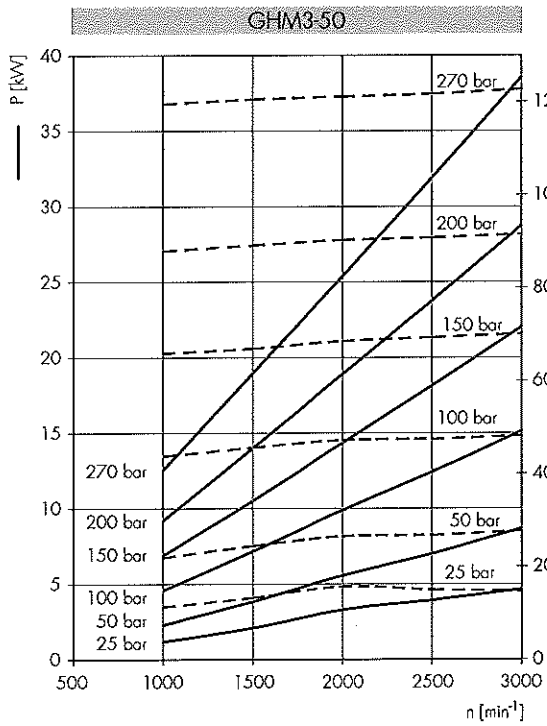
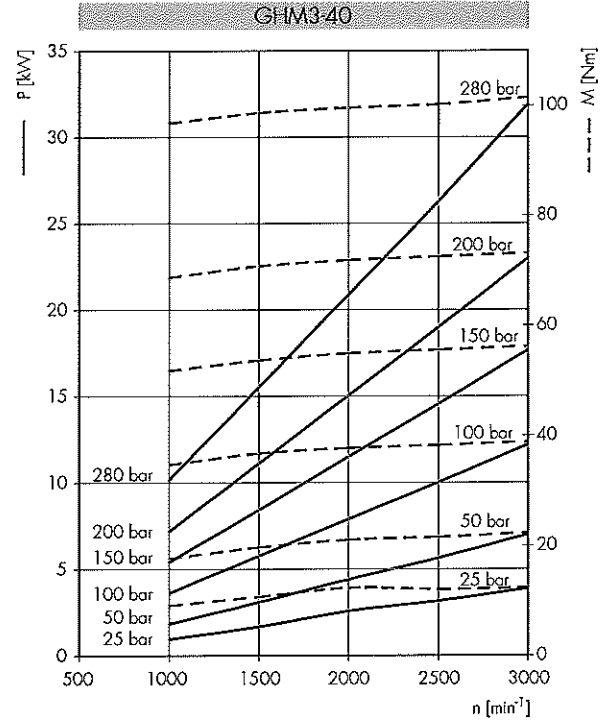
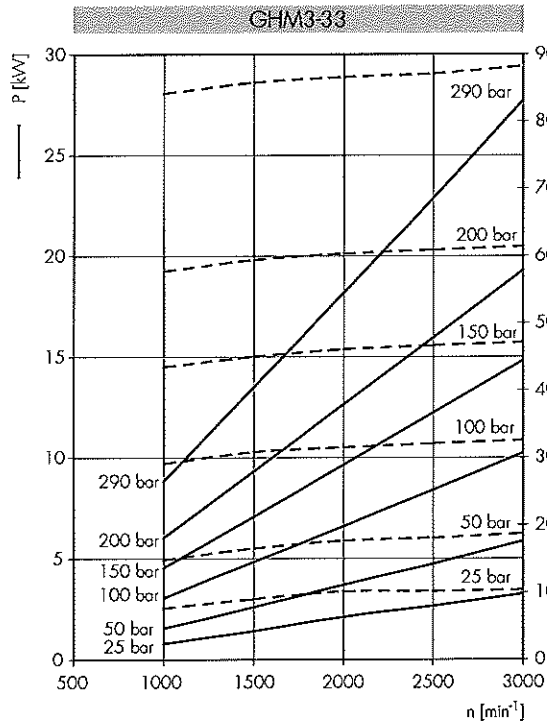
Each curve has been obtained at 50°C, using oil with viscosity 30 cSt at these pressure.

33 | 25-300 bar
40 |
50 | 25-290 bar
60 |
66 |

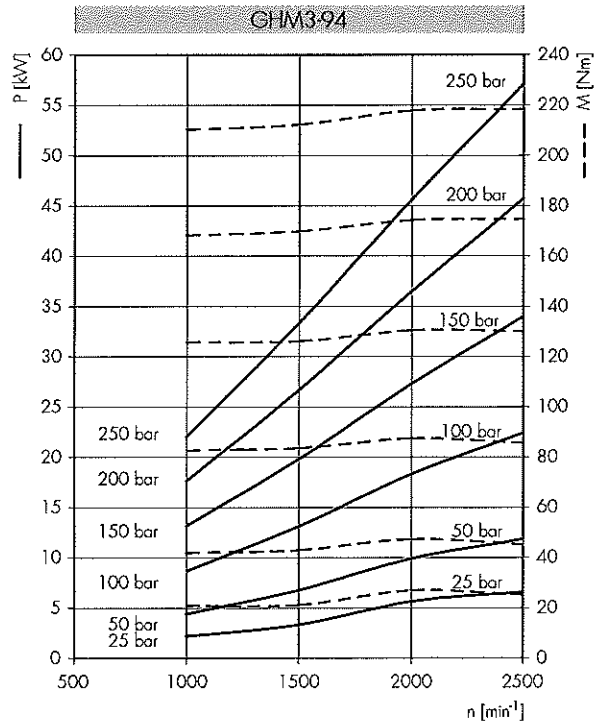
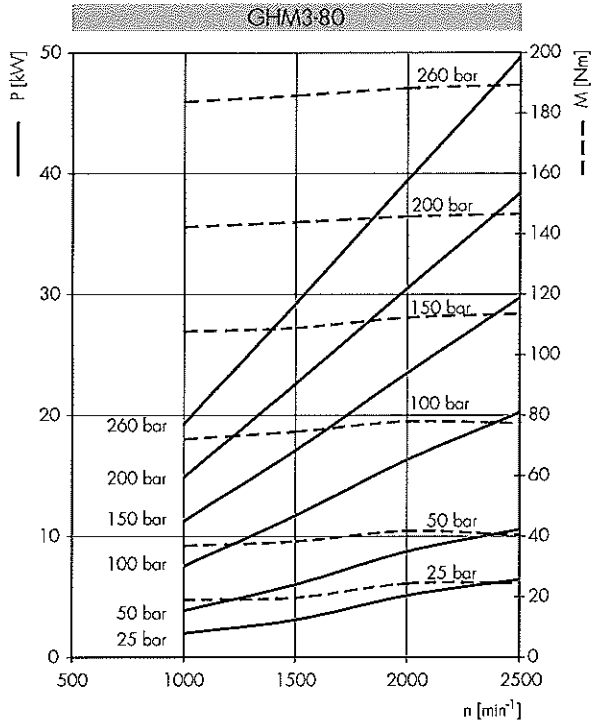
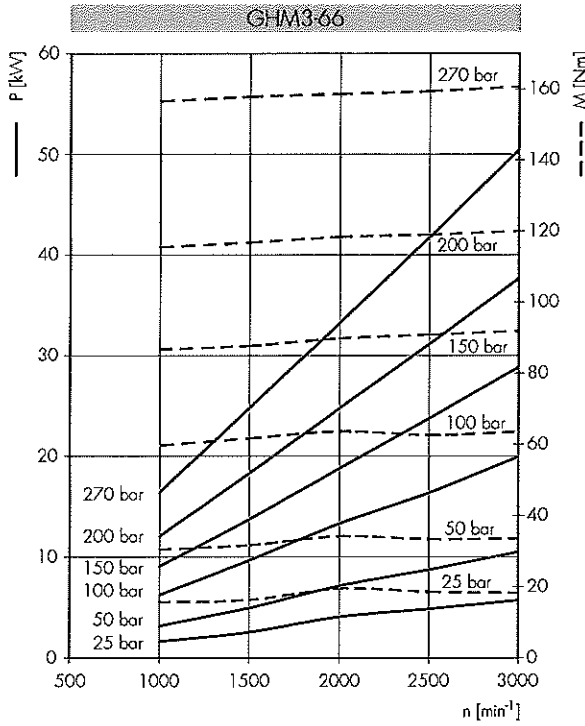
80 | 25-280 bar
94 | 25-240 bar
110 | 25-220 bar

120 | 25-200 bar
135 | 25-180 bar

Potenza erogata *Delivered power* P [kW]
 Momento torcente erogato *Delivered torque* M [Nm]
 Velocità di rotazione *Drive speed* n [giri/min] [rpm]



Potenza erogata *Delivered power* P [kW]
 Momento torcente erogato *Delivered torque* M [Nm]
 Velocità di rotazione *Drive speed* n [giri/min] [rpm]



Potenza erogata *Delivered power* P [kW]
 Momento torcente erogato *Delivered torque* M [Nm]
 Velocità di rotazione *Drive speed* n [giri/min] [rpm]

