

MODULAR UNIT 6MB

GENERAL DESCRIPTION

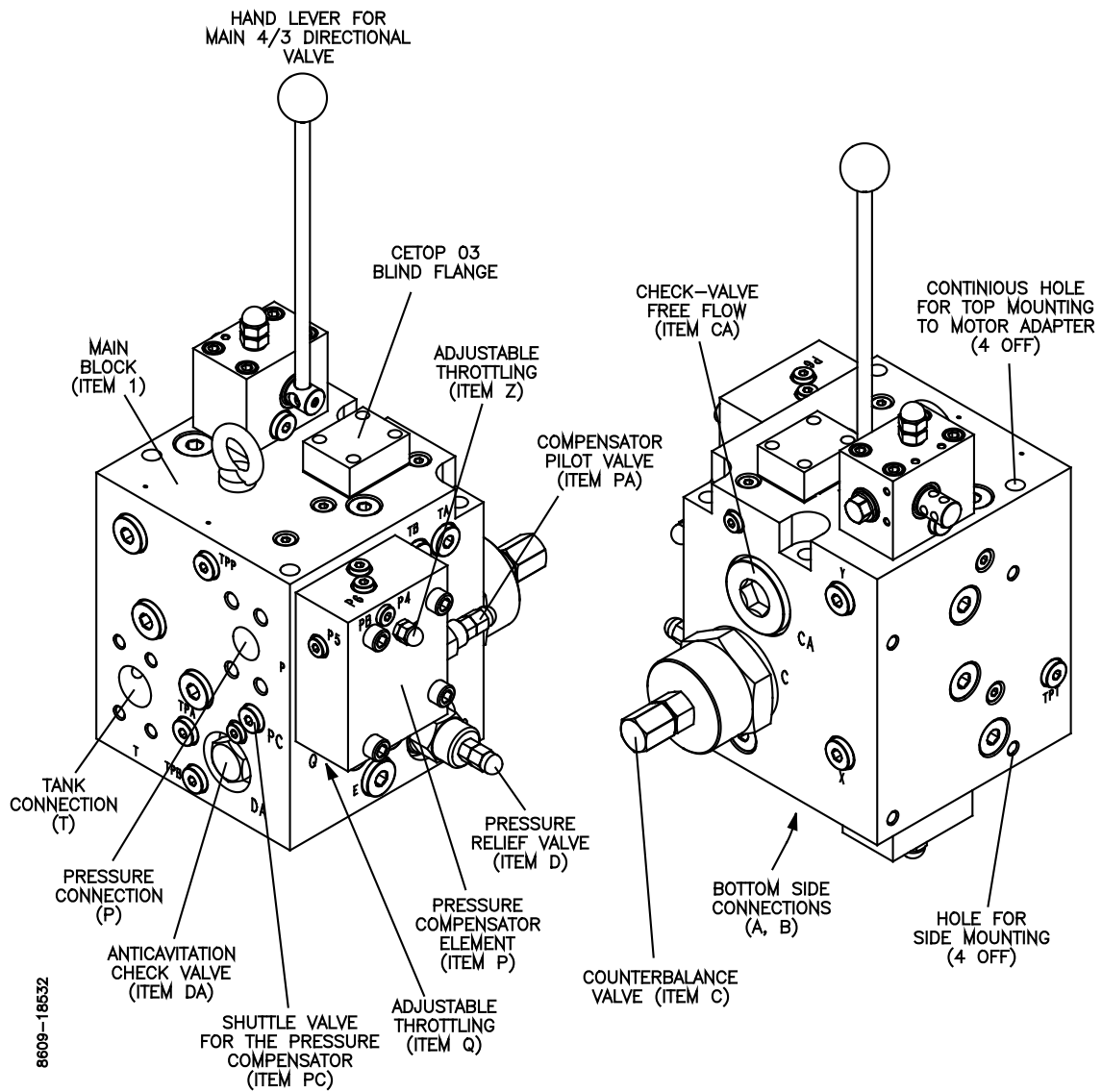


Figure 1 6MB-200-**-2C General Arrangement

Modular Unit 6MB

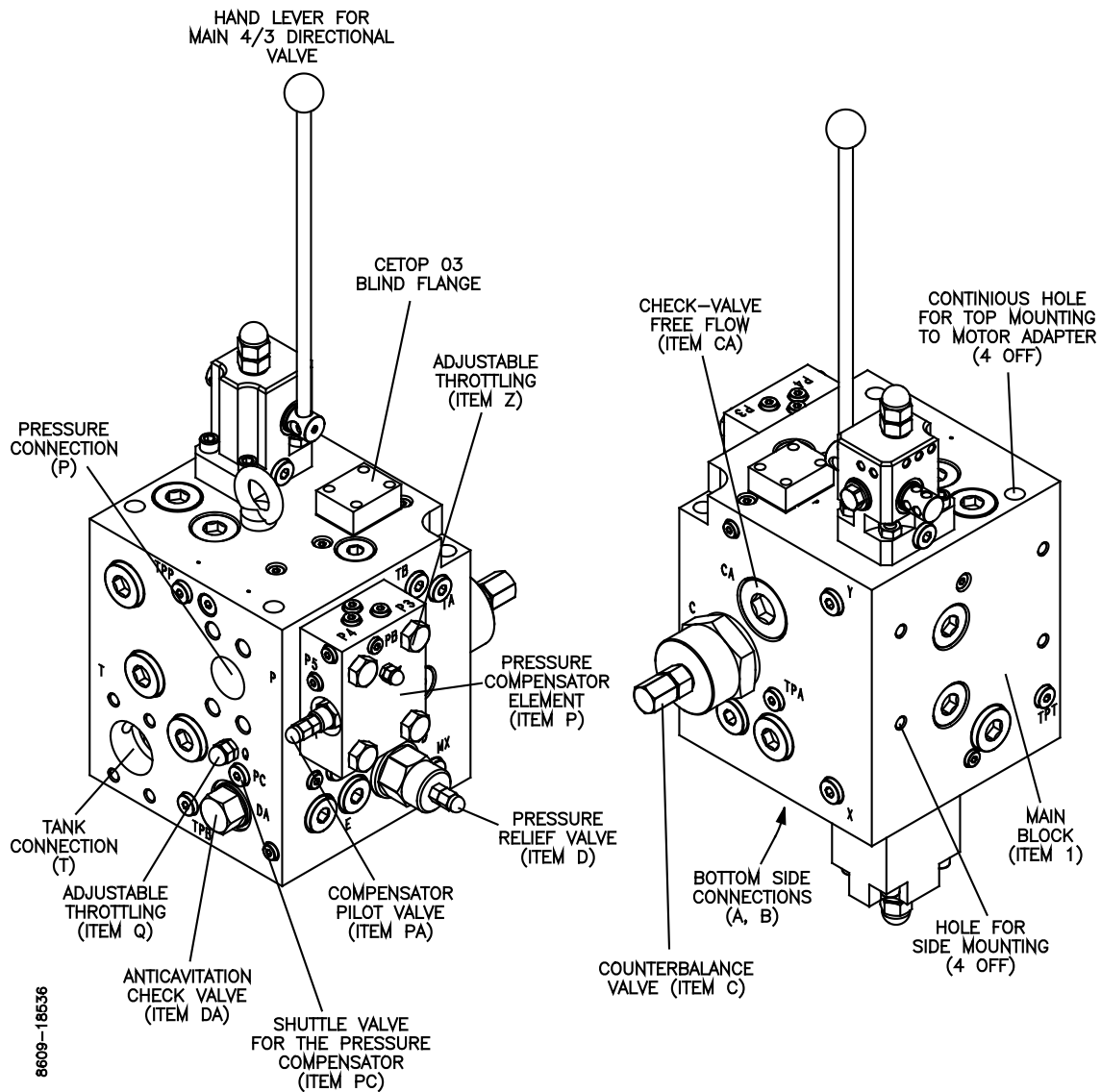


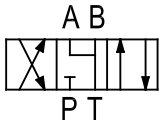
Figure 2 General Arrangement 6MB-650-**-2C

The Modular Units 6 MB is a complete unit for controlling of hydraulically driven winches and has the following improved characteristics:

- Extremely compact design.
- All valves integrated in one unit.
- Designed to withstand marine surroundings
- Pressure compensated flow control system, which gives excellent metering.
- Prepared to fit directly to motor flanges by an adapter.
- Hand lever with 39° control movement in each direction.
- Wide ranges of options.
- Extremely wide capacity range.

For more details about types and options, please refer to section 'MODULAR CODE'.

MODULAR CODE

Options	Remarks	Design Code	Fill in
Standard			
- Directional Control Valve		6MB	
- Counterbalance valve in A			
-Free flow check valve (In Heave)			
- Pressure relief valve A to B	Prepared for mooring		
- Anti-cavitation valve to B			
- Pressure compensator flow control			
- Max operating pressure 315 bar			
Size			
Rated flow Q = 200 l/min		200	
Rated flow Q = 320 l/min	Pressure $\Delta p = 32$ bar	320	
P, A, B: 1" SAE 6000			
T: 1 1/4" SAE 3000			
Rated flow Q = 450 l/min		450	
Rated flow Q = 650 l/min	Pressure $\Delta p = 32$ bar	650	
P, A, B: 1 1/2" SAE 6000			
T: 2" SAE 3000			
Directional Control Valve 4/3			
Manually operated		1	
Manual/remote operated		37	
Manually operated with brake release 4BA3		1B	
Manually/remote operated with brake release 4BA3		37B	
Proportionally electrical remote controlled	Includes separate R	37E	
Proportionally electrical remote controlled	With integrated R	37ER	
Proportionally electrical remote controlled, with brake release 4BA3	Includes separate R for Proportional valve (item E)	37BE	
Proportionally electrical remote controlled, with brake release 4BA3	With integrated R	37BER	
Spool type			
	No option	2C	

Modular Unit 6MB

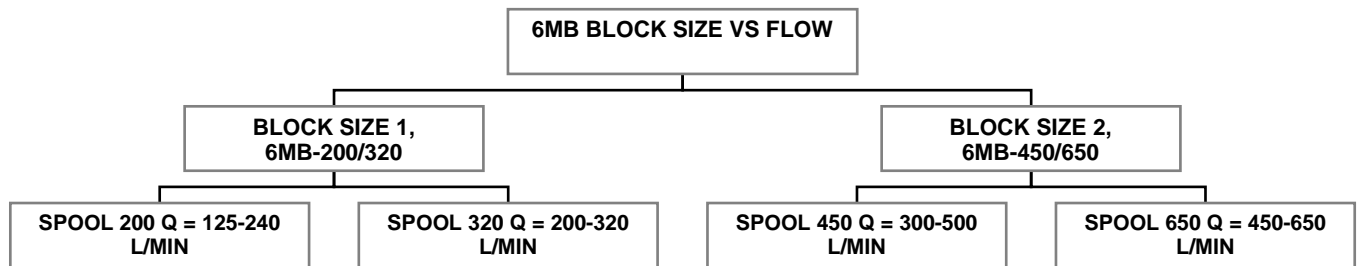
Options	Remarks	Design Code	Fill in
Manual control safety lock, mechanical			
0 position only		L	
0 + 100% in A		L1	
0 + 30% in A		L3	
100% in A and B		L7	
0 + 10-15% in A		L8	
Pressure relief valve			
Mooring valve, direct manually Operated by hand wheel		MAM	
Two-speed valve			
Manually operated		T	
Manually operated with reduced pressure		TR	
Hydraulic operated		TH	
Hydraulic operated with reduced pressure		THR	
Manually/Hydraulic operated with reduced pressure		TMHR	
Electric operated		TE	
Electric operated with reduced pressure		TER	
Pressure reducing valve only		R	
Options			
Boosting external (E to B)		BE	
Double counterbalance valve (A+B)		C2	
Pressure relief valve in (A+B)		D2	
Modification			
Code		(001-999)	

In example a 6MB intend for flow 180 l/min, remote operated, two speed valve with reduced pressure, will have modular code: **6MB-200-37-2C-TR**

Modular Unit 6MB

Selecting the size:

When selecting the size of the 6MB modular unit, the pressure drop in the system must be taken into consideration. Proper control of the winches is another important factor. To achieve this, a certain pressure drop over the main direction valve is necessary. Refer to pages for pressure drop curves.



VALVE DESCRIPTION 6MB (remote operated version)

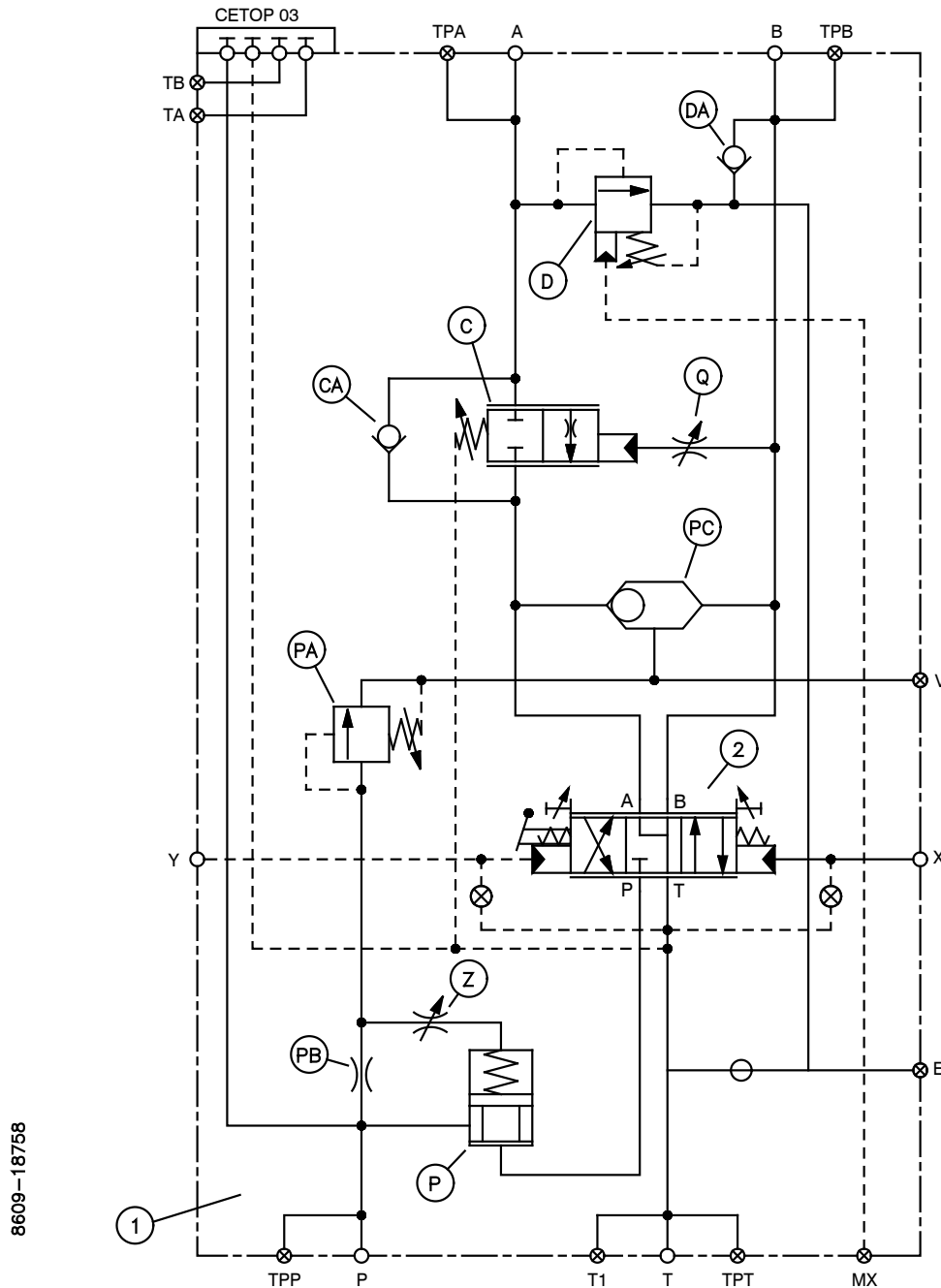


Figure 3 6MB Hydraulic Schematic (remote operated version shown)

6MB modular unit includes in basic version directional control valve (2), pressure compensation flow control system (P, PB, PA, PC and Z), free flow check valve (CA), load control (C and Q), pressure relief (D) and boosting DA.

Modular Unit 6MB

Item 1 **Main block.**

Item 2 **Directional control valve 4/3.**

This is a three positions directional spool valve with hand lever. When activating the directional valve handle, the operator controls the direction and drive speed of the drum. Throttling grooves in the main spool open progressively for flow either to A or B port. The spool has adjustable end stoppers in both end covers for limiting of the spool stroke. A shorter travel of the spool will result in an increase of the pressure drop through the spool and an increase of maximum flow through the valve.

Option code 37:

Directional valve is prepared to be hydraulically proportional remote controlled.

Pilot pressure 5-20 bar.

Item C **Counterbalance valve A→T.**

The counter balance valve keeps the load under control during lowering operations.

Throttling grooves in the counter balance spool open progressively for flow from A→T port, and thus give a smooth lowering operation and low pressure rise with full flow. The counterbalance spool opens by a pilot pressure taken from line B.

Factory preset to 40 bar.

Item Q **Adjustable throttling.**

Throttling for the counter balance pilot channel.

Factory preset to ½ turn counter clockwise (ccw) from closed position.

Item CA **Check-valve free flow P→A**

Bypassing the counter balance valve in Heave.

Item D **Pressure relief valve A→B**

This pilot operated pressure relief valve will in some application be used as a mooring valve, to keep a constant tension on the drum, or freewheeling of the hydraulic motor. Tension pressure can either be adjusted by a hand wheel (option MAM) or remote controlled by port MX.

If presetting is not stated in the order, the pressure relief valve item D is set to its minimum.

Item DA **Anti-cavitation check valve**

Boosting from T to B

General

Measures must be taken to ensure that cavitation cannot occur in a hydraulic system. Therefore, a certain flow must be applied to A or B to replace internal leakage. It is important to prevent boosting oil from running out of the boosting system. A check valve with opening pressure of 2-3 bar in T will usually satisfy this. As far as possible, internal leakage from the hydraulic motor should be connected before the check valve in T. Remember to check max motor casing return pressure against system return pressure.

Standard Boosting 6MB

6MB has internal boosting from T to B as standard. Also a certain flow will leak through nozzle PB, and shuttle valve PC to either A or B.

Generally about the pressure compensator system.

This is a load independent system, which means that a fixed spool stroke on the directional valve will give equal flow independent of the load at the motor/drum.

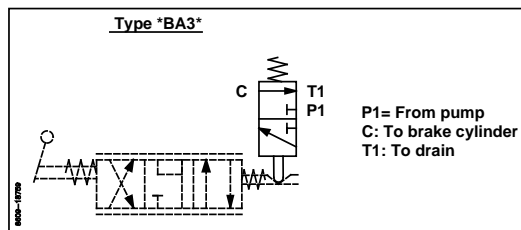
The main directional spool (2) in conjunction with pressure compensator flow control system (P, PA, PB, PC and Z), regulates proportional oil flow to either A (Heave rotation) or B (Lower rotation) by sensing the pressure either in A or B line through the shuttle valve (PC). When operating directional valve (2), the spool will open progressively to A or B. Pressure compensation element will maintain equal Δp across the directional valve. Maximum flow over the main directional valve is depending on the force induced on the pressure compensator element (P). This force is made up of a spring force in the compensator element item (P), and an adjustable spring force in the compensator pilot valve (PA) and the load pressure sensing in A or B via (PC). When setting is altered on the compensator pilot valve (PA), the flow will change.

When adjusting pressure relief valve PA, the Δp through the directional valve will alter, and thus maximum flow to the hydraulic motor.

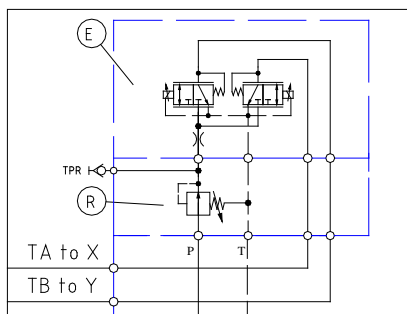
- Item PC Shuttle valve for the pressure compensator.**
Port V can be used for load sensing or in some applications for a hydraulically operated brake release valve.
- Item P Pressure compensator element.**
Normally opens the modulating element, which acts as a pressure compensator to maintain a constant pressure drop across the directional valve (together with PC, PB, PA and Z).
- Item Z Adjustable throttling.**
Adjustable throttle for the pressure compensator element, if the element is fluctuating.
- Item PB Nozzle**
Maintains flow to compensator pilot valve PA.
- Item PA Compensator pilot valve.**
The spring on the compensator is rather weak. Therefore, pressure created by an adjustable pressure relief valve is added to the spring force.

OPTIONS- DESCRIPTION 6MB

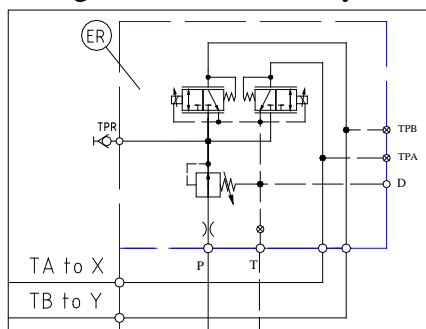
- Code 37** Manually/remote operated.
1B Manually operated, with brake release 4BA3
37B Manually/remote operated, with brake release 4BA3.
 Ports dimension for brake release valve 4BA3: $\frac{3}{8}$ " BSPP



- Code 37E** Manually/Proportionally electrical remote operated.
 Proportional reducing valve item E is Hydranor 8FGB4131021-11/11.
 Pressure reducing valve not integrated in 8FGB4131021-11/11, but separate sandwich component.



- Code 37ER** Manually/Proportionally electrical remote operated with integrated pressure reducing valve and external drain port D. T from ER to main block is plugged.
 Proportional reducing valve item ER is Hydranor 8FGBR4431021-11/11-D



- Code L** Manual control safety lock for locking in 0 position only. This is a mechanical device for preventing operation of the directional valve unless the safety lock is manually released.
 For other locking device, see model code L, L1 etc.

- Code MAM** Mooring valve operated by a hand wheel to control pressure in A.

- Code C2** Counterbalance valve in A and B.

Modular Unit 6MB

Code D2 Pressure relief valves in A (A→B) and B (B→A).

Code BE If it is necessary to increase the boosting, 6MB has an option to have an external boosting, by using port E.

Two-speed valve module

This is a 4/2 directional valve for selecting the speed when using two-speed motor.

Code T Manually operated 4/2-direction valve.

TR Manually operated 4/2-direction valve with reduced pressure.

TH Hydraulic operated 4/2-direction valve.

THR Hydraulic operated 4/2-direction valve with reduced pressure.

TMHR Manually/Hydraulic operated 4/2-direction valve with reduced pressure.

TE Electric (solenoid) operated 4/2-direction valve.

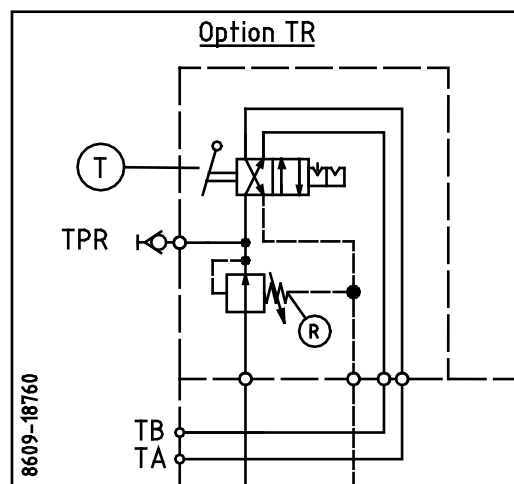
TER Electric (solenoid) operated 4/2-direction valve with reduced pressure.

R Pressure reducing valve only, e.g. for external functions. The reduced pressure is led to port TA.

Pressure reducing valve is in some cases to be used together with brake release valve for reduced pressure to the brake.

Port connection two-speed system:

TA/TB: 3/8" BSPP



Modular Unit 6MB

DIMENSIONS

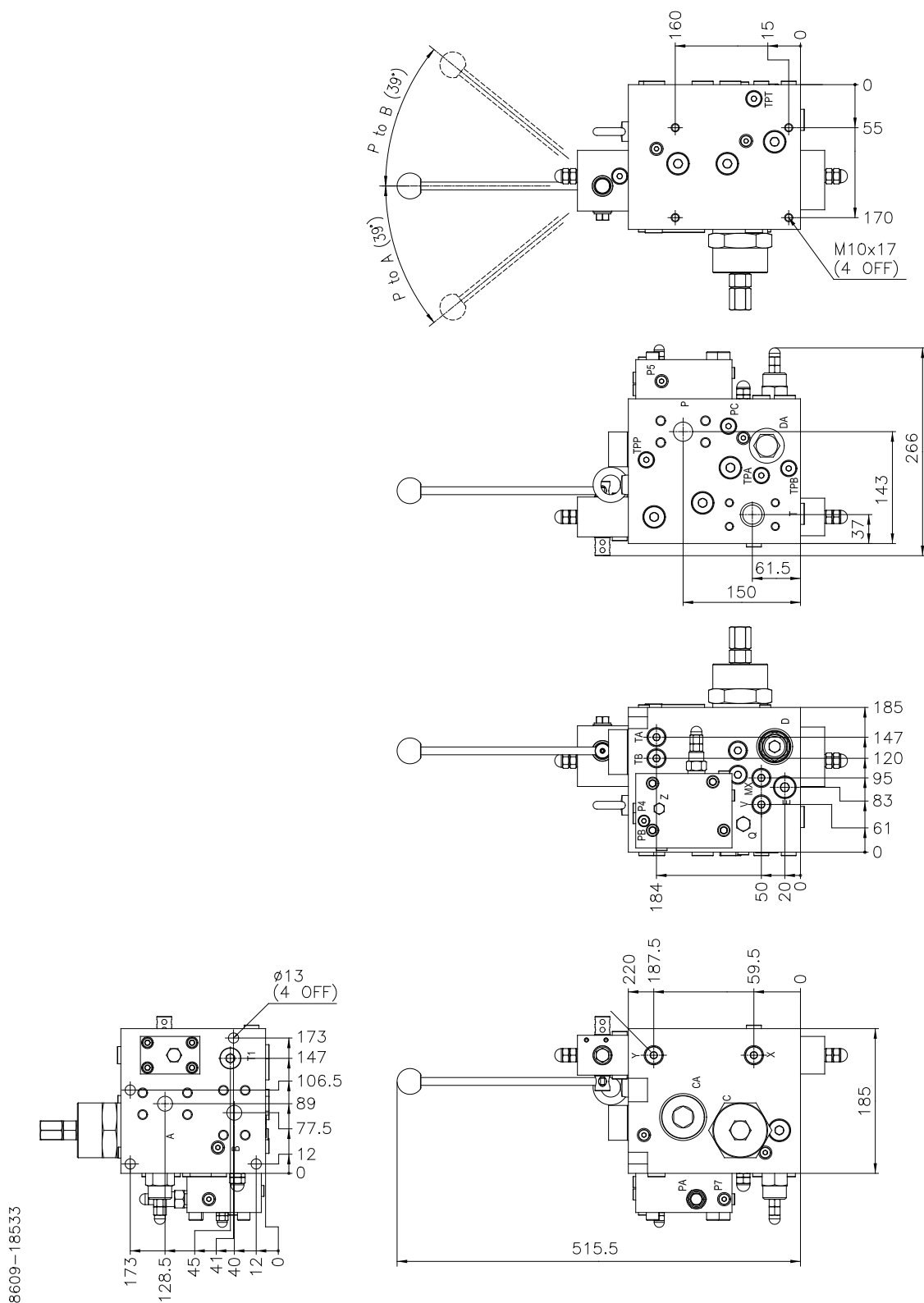


Figure 4 Dimensions 6MB-200/320

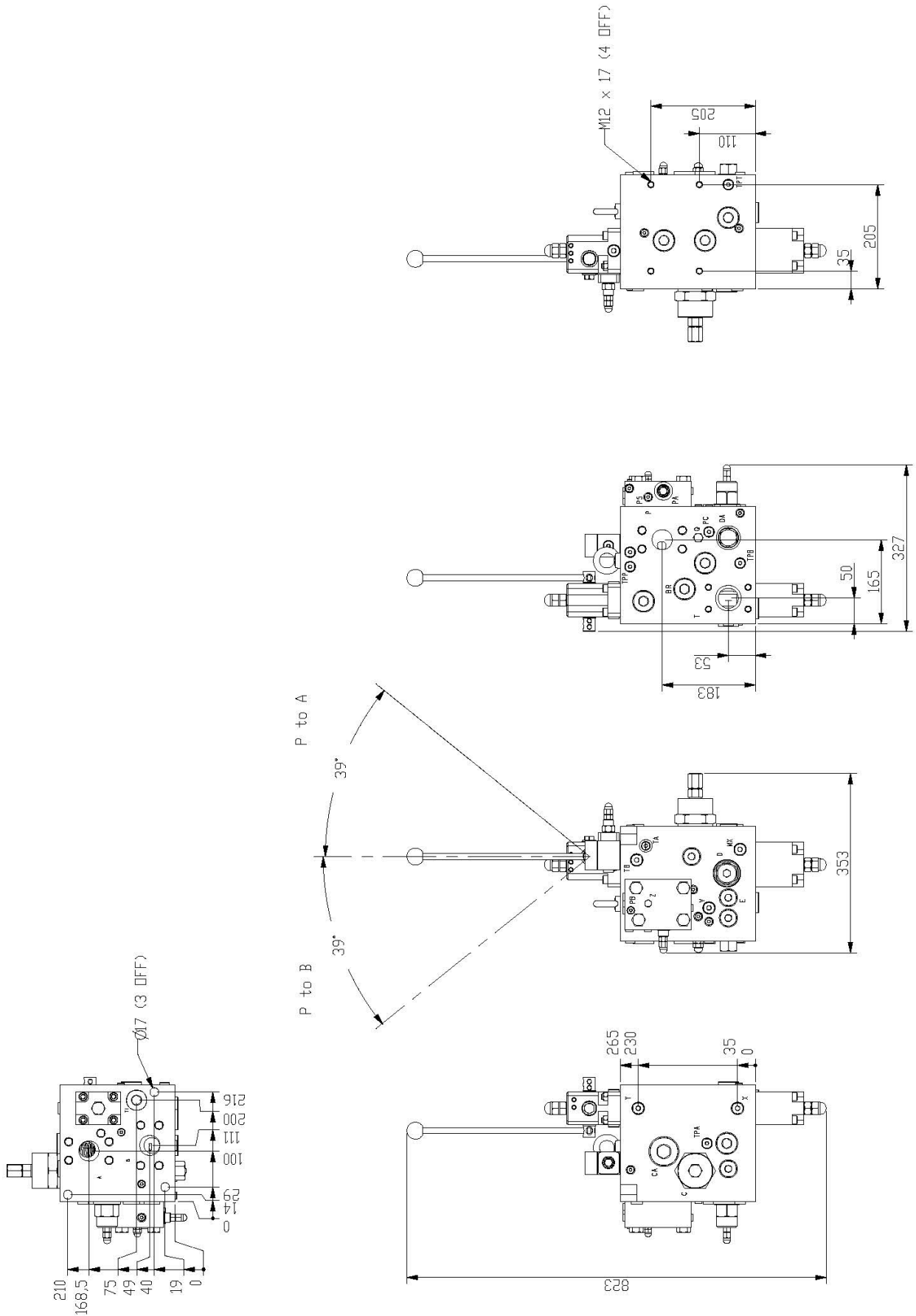


Figure 5 Dimensions 6MB-450/650

PRESSURE DROP 6MB

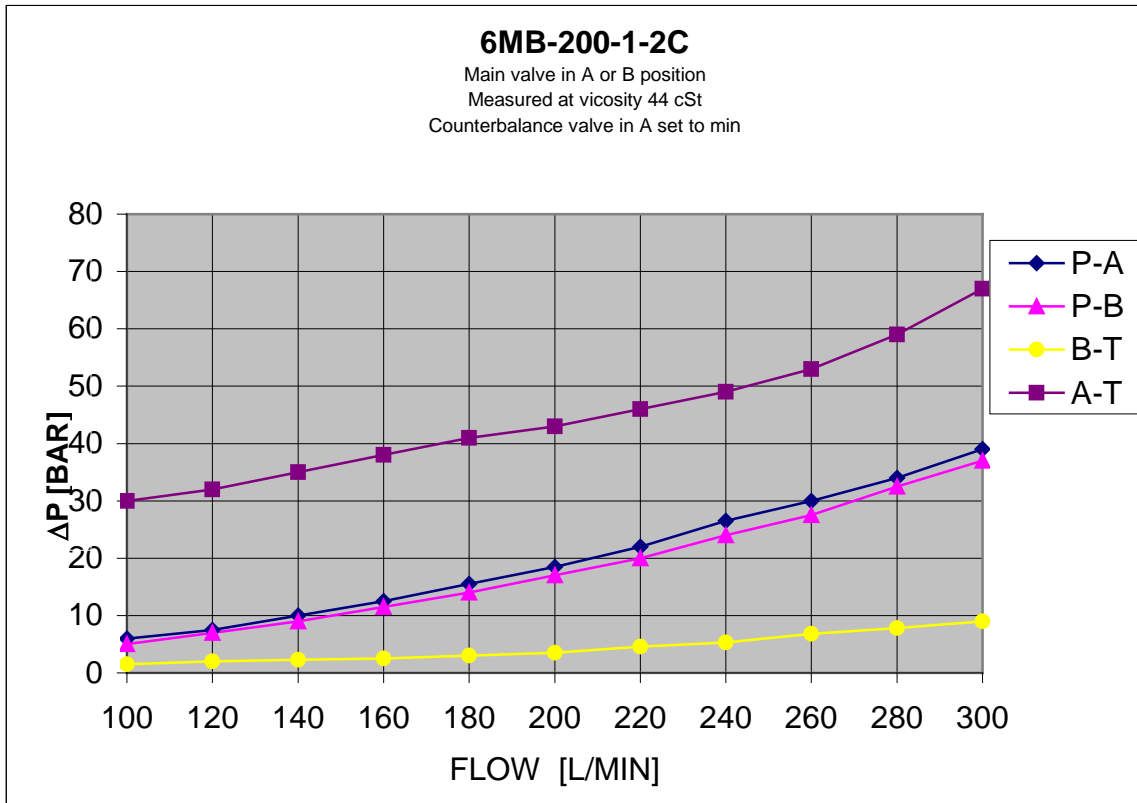


Figure 6 Pressure drop 6MB-200-1-2C

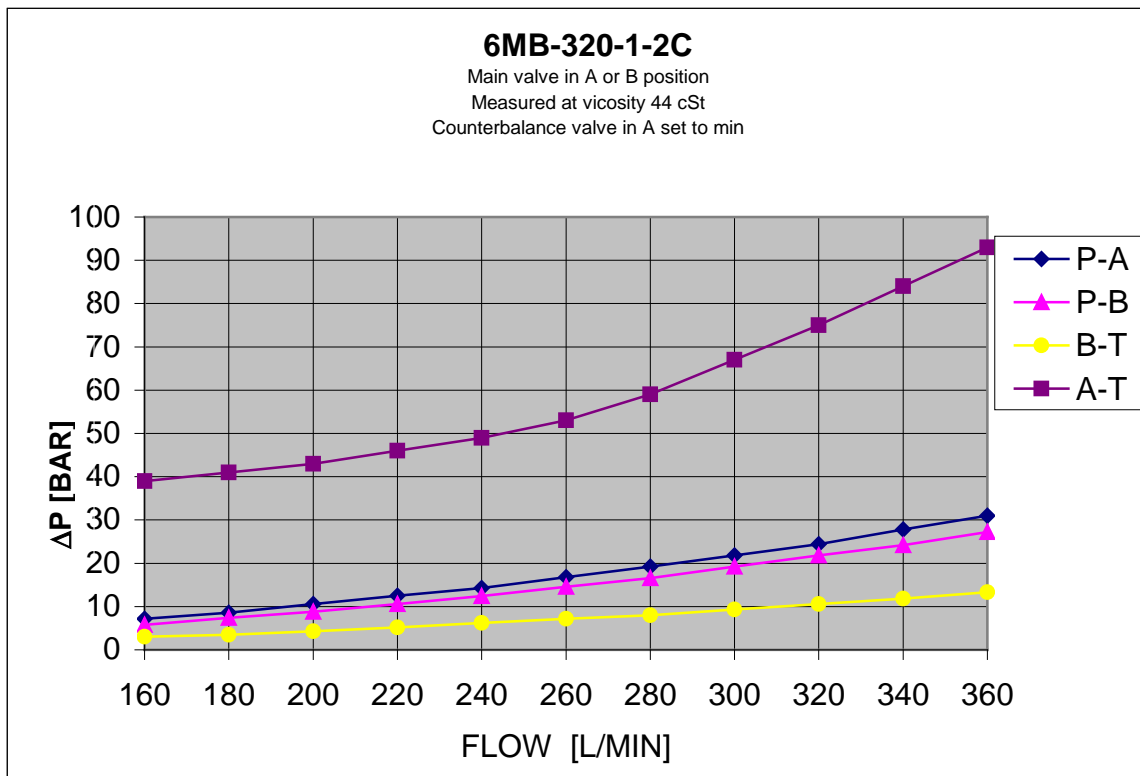


Figure 7 Pressure drop 6MB-320-1-2C

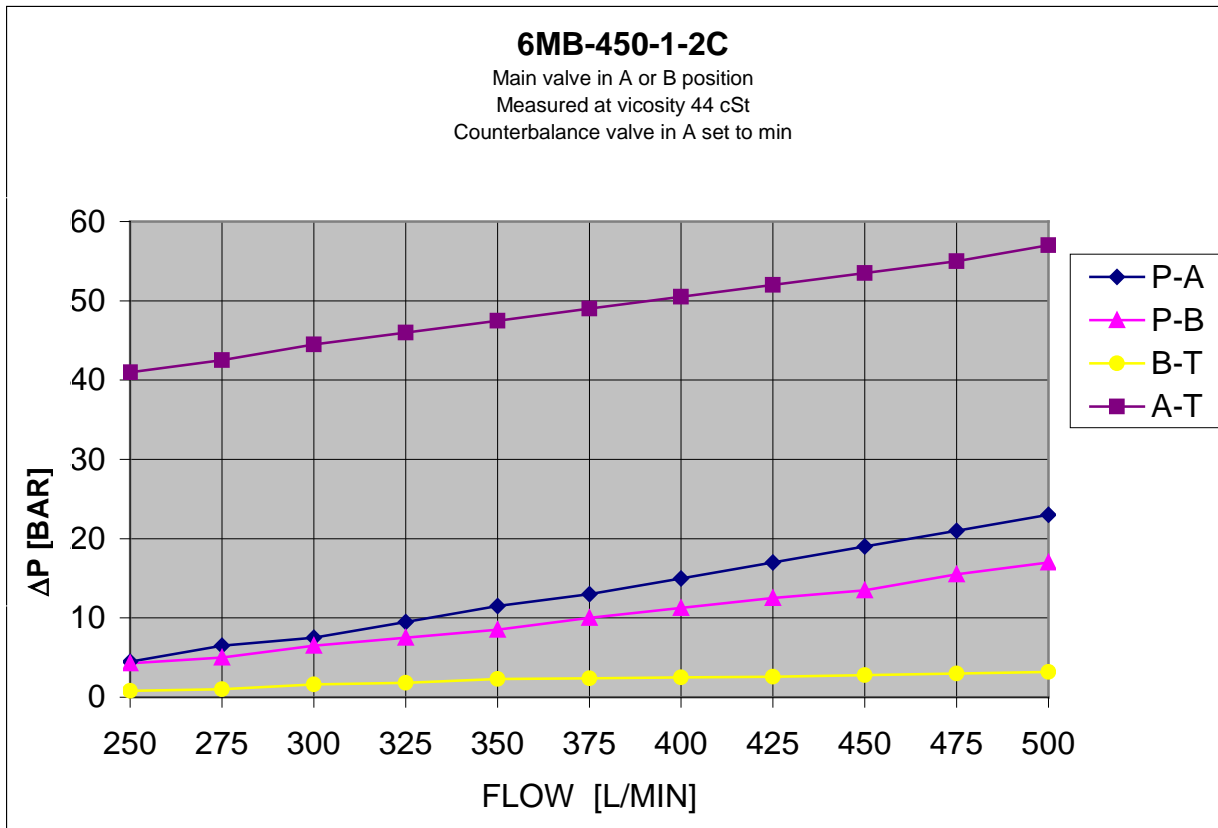


Figure 8 Pressure drop 6MB-450-1-2C p

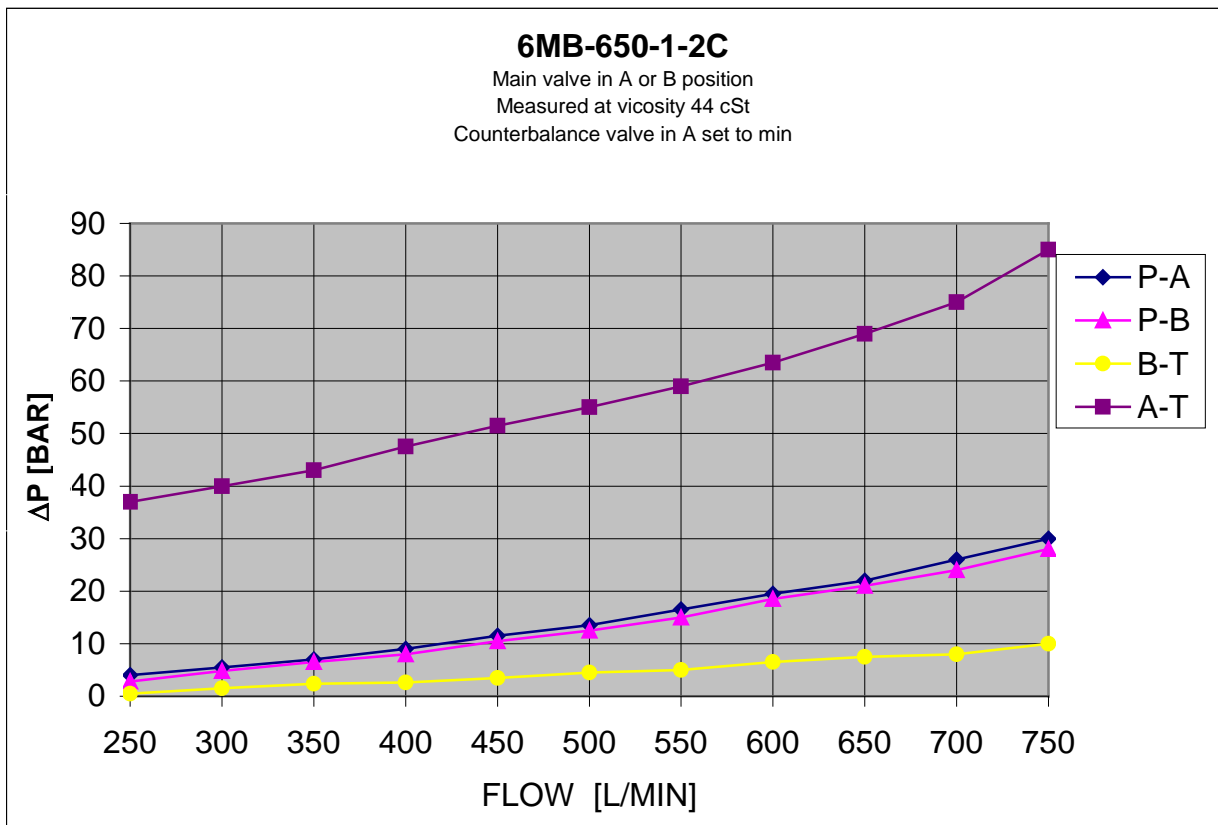


Figure 9 Pressure drop 6MB-650-1-2C

TECHNICAL DATA

Description	Symbol	Unit	Value			
Flow (Δp 32 bar)	Q_{max}	l/min	6MB-200	6MB-320	6MB-450	6MB-650
Flow area		l/min	125-240	200-320	300-500	450-650
Max. operating pressure in ports P, A and B	P_{max}	bar	315			
Recommended max. pressure in port T. (See Note 1.)	T_{max}	bar	20			
Directional valve pilot pressure	P	bar	5-20			
Weight basic version	m	kg	6MB-200/320		6MB-450/650	
			56		96	
Hydraulic fluid			Mineral oils for hydraulic system			
Viscosity range:	ν	m^2/s	10 to 350 (cST)			
Viscosity index:	VI		> 120			
Filtration, recommended filter with $\beta_{20} \geq 100$			Class 9 according to NAS 1638, 18/15 according to ISO 4406			
Fluid temperature range:	T		-20°C to + 70°C			
Ambient temperature range	T		-20°C to + 50°C			
Standard Body Material			EN-GJS-400-15 (GGG 40)			
Standard O-rings			Nitrile shore 70			

Note1: Be aware that pressure on the tank port T is direct additive to valve setting for pressure relief valve item D, and pressure reducing valve item R (If selected option R). Pressure peaks in T port can influence on the stability of the system, particular proportional remote control of main directional valve.

Interfaces:

Connections		
Ports	Dimensions 6MB-200/320	Dimensions 6MB-450/650
P, A and B	1" SAE 6000	1½" SAE 6000
T	1¼" SAE 3000	2" SAE 3000
MX, V, X, Y, TA, TB	¾" BSPP	¾" BSPP
E	½" BSPP	¾" BSPP
L (When having adapter for direct motor mounting)	½" BSPP	½" BSPP
TPP, TPT, TPA and TPB	¼" BSPP	¼" BSPP
Mounting Screws:	4 of M 10 (Thread depth 17 mm)	4 of M 12 (Thread depth 17 mm)

Modular Unit 6MB

INSTALLATION

The Modular unit 6MB is installed with 4 screws to a bracket, or mounted to a motor flange by an adapter plate. Please refer to 'Interfaces' in section 'TECHNICAL DATA', for details about screws and o-rings.

OPERATION

Manual control is performed by the hand lever. The valve is delivered with a centring spring, which means that main spool will return to the neutral position after operating the hand lever.

Option 37 (Manual/remote operated):

The directional valve is prepared to be hydraulically proportional remote controlled. An external pilot pressure moves the spool to the requested position Pilot pressure 5-20 bar. The valves are equipped with a hand lever for overriding the pilot pressure.

VALVE ADJUSTMENTS

If presetting is not stated in the order, the pressure relief valve (item D) is set to its minimum. The counterbalance valve is preset to 40 bar opening pressure, which is minimum recommended opening pressure.

Throttling item Q is factory preset to ½ turn ccw from closed position.

MAINTENANCE

Check the valve for proper function. Visually check the valve and if required, paint unpainted (damaged) areas.

CAUTION: Do not paint the hand levers shaft seals.

SPARE PART

Seal Kit Set is available.

STORAGE

If storage longer than 6 months is expected, the valve must be kept in a dry room, free from dust and protected against sudden large temperature variations. For storage longer than 12 months, the valve must be filled with inhibition oil. Before use check all visible seals and flush with clean oil.

MARKING

Inlets and outlets are marked, refer to figure in section 'GENERAL DESCRIPTION'.