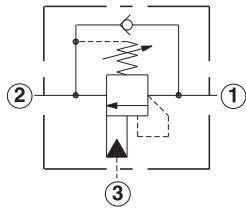
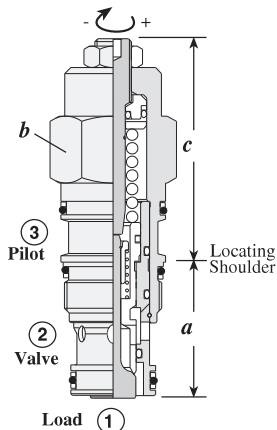


Counterbalance Valves

SEMI-RESTRICTIVE, 280 BAR MAXIMUM SETTING

Turn screw clockwise to reduce setting and release load.
Complete Adjustment 3 3/4 Turns



Capacity	Typical Cartridge Model Code	Cavity	Cartridge Dimensions				Installation Torque (Nm)
			a	b	L	C	
40 L/min.	CBBC – LHN	T - 11A	34,9	22,2	50	56	40/50
80 L/min.	CBDC – LHN	T - 2A	34,9	28,6	61	64	60/70
160 L/min.	CBFC – LHN	T - 17A	46	31,8	70	84	200/215

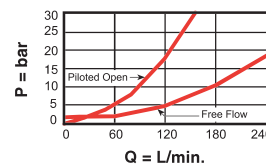
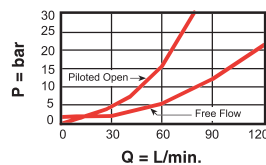
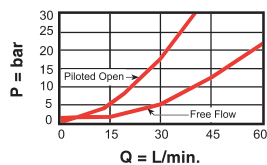
Performance Curves

CBB*

CBD*

CBF*

Free Flow and Pilot Open Pressure Drop



- Load holding to 215 bar with 280 bar valve setting
- Maximum valve leakage at reseal = 0,4 cc/min.
- Reseat exceeds 85% of set pressure
- Factory pressure setting established at 32,8 cc/min.
- Counterbalance valves should be set at least 1.3 times the maximum load induced pressure.
- Back pressure at port 2 adds to the effective relief setting at a ratio of 1 plus the pilot ratio times the back pressure.

OPTION ORDERING INFORMATION Model Codes printed in Red are Preferred Versions and most readily available

Nominal Capacity	Version	Control**	Cracking Pressure	Seal
B 40 L/min.	B 1.5:1 Pilot Ratio (with sealed pilot)	L Standard Screw	I,7 Bar Check Spring	N Buna-N
D 80 L/min.	C 3:1 Pilot Ratio (with sealed pilot)	C Tamper Resistant	H 70 - 280 bar	V Viton
F 160 L/min.			I 25 - 105 bar	
			0,3 Bar Check Spring	
			A 70 - 280 bar	
			B 25 - 105 bar	

Adjustment Range Options:
A and H are standard set at 210 bar.
I and B are standard set at 70 bar.
Customer may specify setting.

** See page 162 for information on Control Options

Visit www.sunhydraulics.com for detailed and complete technical information on our full line of products.