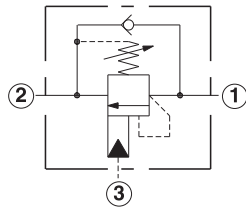
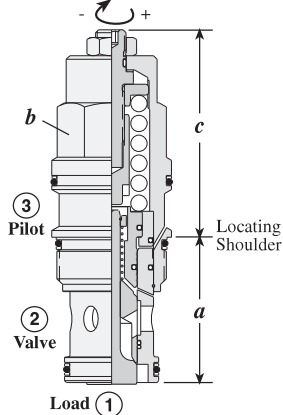


Counterbalance Valves

STANDARD, 350 BAR MAXIMUM SETTING

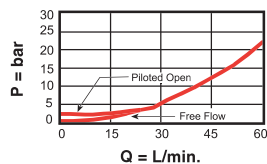
Turn screw clockwise to reduce setting and release load.
Complete Adjustment 3 3/4 Turns



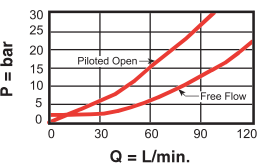
| Capacity | Typical Cartridge Model Code | Cavity | Cartridge Dimensions | | | | Installation Torque (Nm) |
|------------|------------------------------|---------|----------------------|------|----|-----|--------------------------|
| | | | a | b | c | | |
| | | | | | L | C | |
| 60 L/min. | CBCG – L J N | T - 11A | 34,9 | 22,2 | 50 | 56 | 40/50 |
| 120 L/min. | CBEG – L J N | T - 2A | 34,9 | 28,6 | 61 | 64 | 60/70 |
| 240 L/min. | CBGG – L J N | T - 17A | 46 | 31,8 | 70 | 84 | 200/215 |
| 480 L/min. | CBIG – L J N | T - 19A | 63,5 | 41,3 | 90 | 104 | 465/500 |

Performance Curves

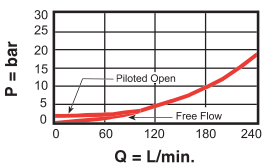
CBC*



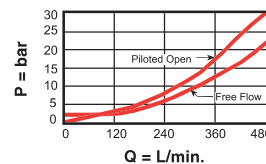
CBE*



CBG*



CBI*



Free Flow and Pilot Open Pressure Drop

- Load holding to 270 bar with 350 bar valve setting
- Maximum valve leakage at reseal = 0,4 cc/min.
- Reseat exceeds 85% of set pressure
- Factory pressure setting established at 32,8 cc/min.
- Counterbalance valves should be set at least 1.3 times the maximum load induced pressure.
- Back pressure at port 2 adds to the effective relief setting at a ratio of 1 plus the pilot ratio times the back pressure.

OPTION ORDERING INFORMATION Model Codes printed in Red are Preferred Versions and most readily available

| Nominal Capacity | Version | Control** | Cracking Pressure | Seal |
|---------------------|--|---------------------------|-------------------------------|-----------------|
| C 60 L/min. | G 4.5:1 Pilot Ratio | L Standard Screw | J 1,7 Bar Check Spring | N Buna-N |
| E 120 L/min. | H 10:1 Pilot Ratio | C Tamper Resistant | K 70 - 175 bar | V Viton |
| G 240 L/min. | L 2.3:1 Pilot Ratio (with sealed pilot) | | 0,3 Bar Check Spring | |
| I 480 L/min. | | | C 140 - 350 bar | |
| | | | D 70 - 175 bar | |

** See page 162 for information on Control Options

Adjustment Range Options:
J and C are standard set at 210 bar.
K and D are standard set at 140 bar.
Customer may specify setting.

Visit www.sunhydraulics.com for detailed and complete technical information on our full line of products.