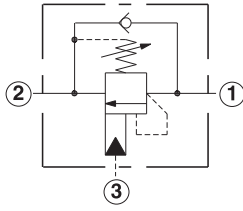
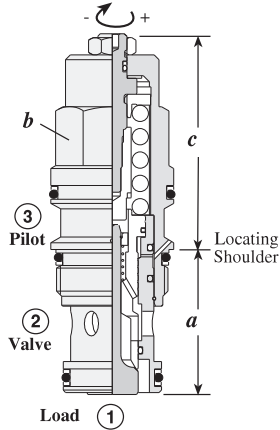


# Counterbalance Valves

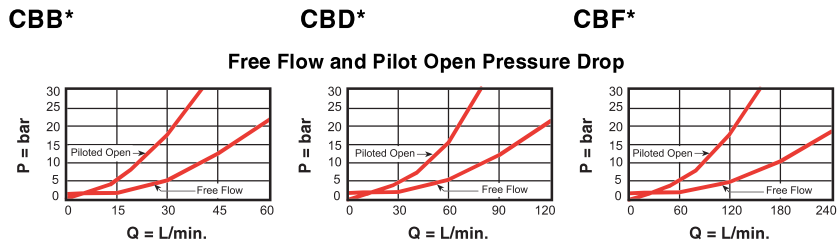
## SEMI-RESTRICTIVE, 350 BAR MAXIMUM SETTING

Turn screw clockwise to reduce setting and release load. Complete Adjustment 3 3/4 Turns



Capacity	Typical Cartridge Model Code	Cavity	Cartridge Dimensions				Installation Torque (Nm)
			a	b	c		
					L	C	
40 L/min.	<b>CBBD - L JN</b>	T - 11A	34,9	22,2	50	56	40/50
80 L/min.	<b>CBDD - L JN</b>	T - 2A	34,9	28,6	61	64	60/70
160 L/min.	<b>CBFD - L JN</b>	T - 17A	46	31,8	70	84	200/215

### Performance Curves



- Load holding to 270 bar with 350 bar valve setting
- Maximum valve leakage at reseal = 0,4 cc/min.
- Reseat exceeds 85% of set pressure
- Factory pressure setting established at 32,8 cc/min.
- Counterbalance valves should be set at least 1.3 times the maximum load induced pressure.
- Back pressure at port 2 adds to the effective relief setting at a ratio of 1 plus the pilot ratio times the back pressure.

### OPTION ORDERING INFORMATION Model Codes printed in Red are Preferred Versions and most readily available

**CB** ★ ★ - ★ ★ ★

<p><b>Nominal Capacity</b></p> <p><b>B</b> 40 L/min.</p> <p><b>D</b> 80 L/min.</p> <p><b>F</b> 160 L/min.</p>	<p><b>Version</b></p> <p><b>D</b> 4.5:1 Pilot Ratio (with sealed pilot)</p> <p><b>L</b> 2.3:1 Pilot Ratio (with sealed pilot)</p>	<p><b>Control**</b></p> <p><b>L</b> Standard Screw</p> <p><b>C</b> Tamper Resistant</p>	<p><b>Cracking Pressure</b></p> <p><b>J</b> 140 - 350 bar</p> <p><b>K</b> 70 - 175 bar</p> <p><b>0,3 Bar Check Spring</b></p> <p><b>C</b> 140 - 350 bar</p> <p><b>D</b> 70 - 175 bar</p>	<p><b>Seal</b></p> <p><b>N</b> Buna-N</p> <p><b>V</b> Viton</p>
---	---	---	--	---

*Adjustment Range Options:*  
*J and C are standard set at 210 bar.*  
*K and D are standard set at 140 bar.*  
**Customer may specify setting.**

\*\* See page 162 for information on Control Options

Visit [www.sunhydraulics.com](http://www.sunhydraulics.com) for detailed and complete technical information on our full line of products.