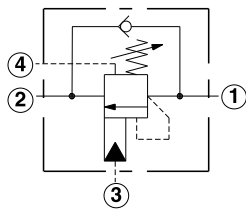
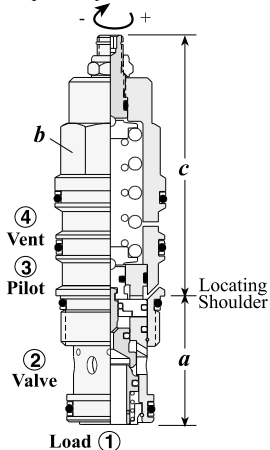


Counterbalance Valves

VENTED, 280 BAR MAXIMUM SETTING

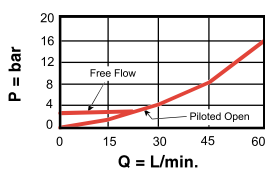
Turn screw clockwise to reduce setting and release load.
Complete Adjustment 4 Turns



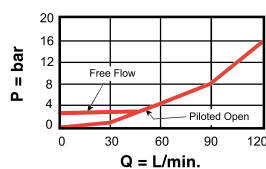
Capacity	Typical Cartridge Model Code	Cavity	Cartridge Dimensions				Installation Torque (Nm)
			a	b	L	C	
60 L/min.	CWCA – LHN	T - 21A	34,9	22,2	74	81	40/50
120 L/min.	CWEA – LHN	T - 22A	34,9	28,6	84	90	60/70
240 L/min.	CWGA – LHN	T - 23A	46	31,8	96	101	200/215
480 L/min.	CWIA – LHN	T - 24A	63,5	41,3	117	126	465/500

Performance Curves

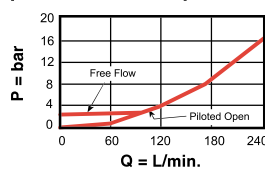
CWC*



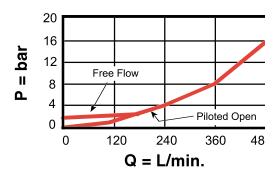
CWE*



CWG*



CWI*



Free Flow and Pilot Open Pressure Drop

- Load holding to 210 bar with 280 bar valve setting
- Maximum valve leakage at reseal = 0,4 cc/min.
- Reseat exceeds 85% of set pressure
- Factory pressure setting established at 32,8 cc/min.
- Free flow check cracking pressure = 2,8 bar
- Counterbalance valves should be set at least 1.3 times the maximum load induced pressure.

OPTION ORDERING INFORMATION **Model Codes printed in Red are Preferred Versions and most readily available**

Nominal Capacity	Version	Control**	Cracking Pressure	Seal
C 60 L/min.	A 3:1 Pilot Ratio	L Standard Screw	Pilot Ratios	N Buna-N
E 120 L/min.	K 1:1 Pilot Ratio	C Tamper Resistant	H 70 - 280 bar	V Viton
G 240 L/min.			I 25 - 105 bar	
I 480 L/min.				

Adjustment Range Options:
H is standard set at 210 bar.
I is standard set at 70 bar.
Customer may specify setting.

** See page 162 for information on Control Options

Visit www.sunhydraulics.com for detailed and complete technical information on our full line of products.