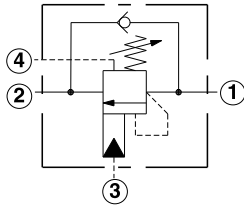
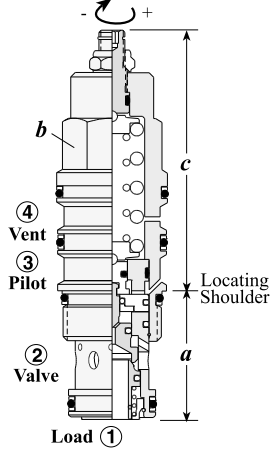


Counterbalance Valves

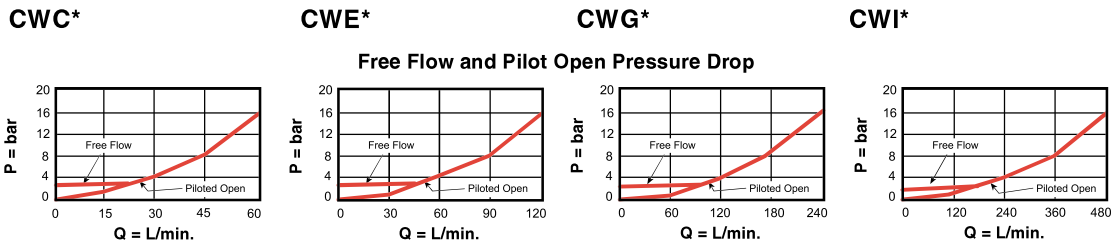
VENTED, 420 BAR MAXIMUM SETTING

Turn screw clockwise to reduce setting and release load. Complete Adjustment 4 Turns



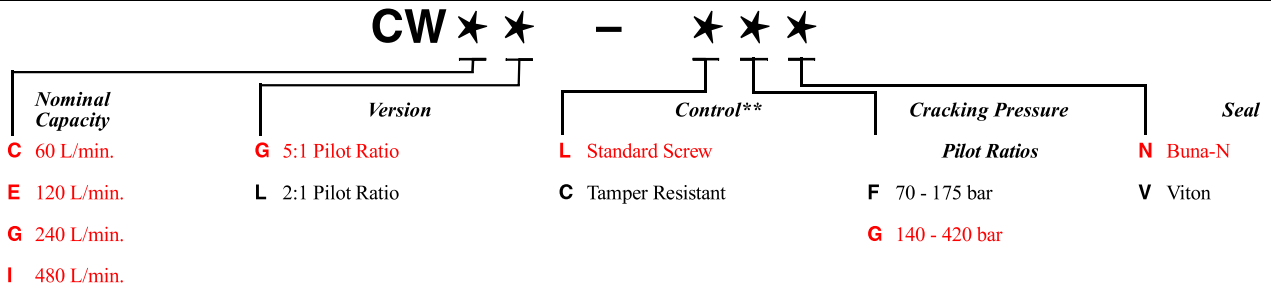
Capacity	Typical Cartridge Model Code	Cavity	Cartridge Dimensions				Installation Torque (Nm)
			a	b	L	C	
60 L/min.	CWCG- LFN	T - 21A	34,9	22,2	74	81	40/50
120 L/min.	CWEG- LFN	T - 22A	34,9	28,6	84	90	60/70
240 L/min.	CWGG- LFN	T - 23A	46	31,8	96	101	200/215
480 L/min.	CWIG - LFN	T - 24A	63,5	41,3	117	126	465/500

Performance Curves



- Load holding to 320 bar with 420 bar valve setting
- Maximum valve leakage at reseal = 0,4 cc/min.
- Reseat exceeds 85% of set pressure
- Factory pressure setting established at 32,8 cc/min.
- Free flow check cracking pressure = 2,8 bar
- Counterbalance valves should be set at least 1.3 times the maximum load induced pressure.

OPTION ORDERING INFORMATION Model Codes printed in Red are Preferred Versions and most readily available



Adjustment Range Options:
F is standard set at 140 bar.
G is standard set at 280 bar.
Customer may specify setting.

** See page 162 for information on Control Options

Visit www.sunhydraulics.com for detailed and complete technical information on our full line of products.

