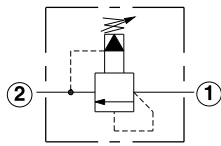
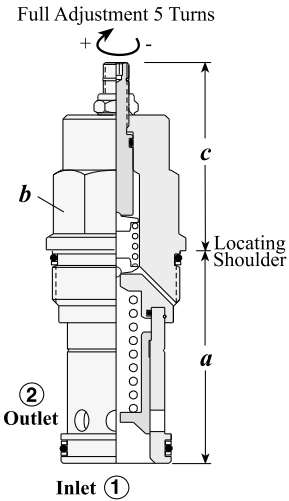
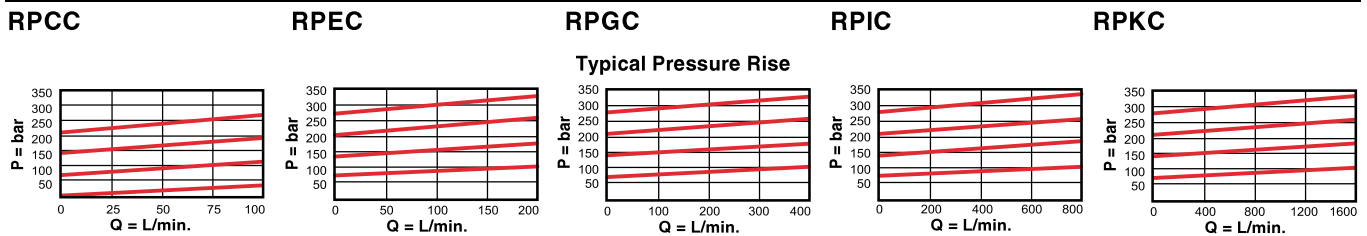


PILOT OPERATED BALANCED PISTON,



Capacity	Typical Cartridge Model Code	Cavity	Cartridge Dimensions					Installation Torque (Nm)
			a	b	L	C	K	
45 L/min.	RPCC – LAN	T - 162A	31	19,1	54	56	59	35/40
95 L/min.	RPEC – LAN	T - 10A	39,7	22,2	51	53	58	40/50
200 L/min.	RPGC – LAN	T - 3A	47,8	28,6	54	56	61	60/70
380 L/min.	RPIC – LAN	T - 16A	61,9	31,8	62	64	69	200/215
760 L/min.	RPKC – LAN	T - 18A	79,4	41,3	72	74	78	465/500

Performance Curves



- Maximum operating pressure = 350 bar
- Will accept maximum pressure at Port 2
- Back pressure on the tank port (port 2) is directly additive at a 1:1 ratio to the valve setting
- Factory pressure settings established at 15 L/min.
- Typical response time 10 ms.
- Maximum leakage = RPCC, RPEC: 32,8 cc/min./70 bar, RPGC: 49,2 cc/min./70 bar, RPIC: 66,5 cc/min./70 bar, RPKC: 81,9 cc/min./70 bar
- RPCC minimum setting for all spring ranges is 5 bar.

OPTION ORDERING INFORMATION Model Codes printed in Red are Preferred Versions and most readily available

RP ★ C – ★ ★ ★		Seal	
Nominal Capacity	Control**	Adjustment Range	
C 45 L/min.*	L Standard Screw	A 7 - 210 bar	N Buna-N
E 95 L/min.	C Tamper Resistant	B 3,5 - 105 bar	V Viton
G 200 L/min.	K Handknob	C 10 - 420 bar	
I 380 L/min.		N 4 - 55 bar	
K 760 L/min.		Q 4 - 25 bar	
		W 10 - 315 bar	

** See page 162 for information on Control Options

Adjustment Range Options:
 A, B, C, and W are standard set at 70 bar.
 N Option is standard set at 25 bar.
 Q Option is standard set at 14 bar.
 * Minimum setting 5 bar on all ranges.
 Customer may specify pressure setting.

Visit www.sunhydraulics.com for detailed and complete technical information on our full line of products.