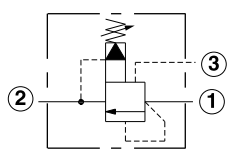
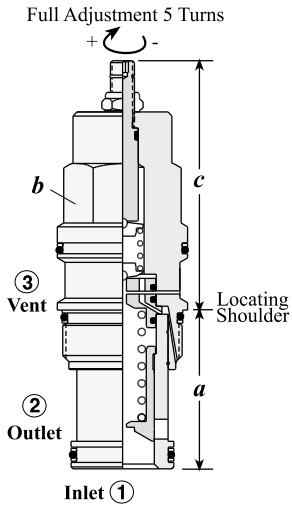
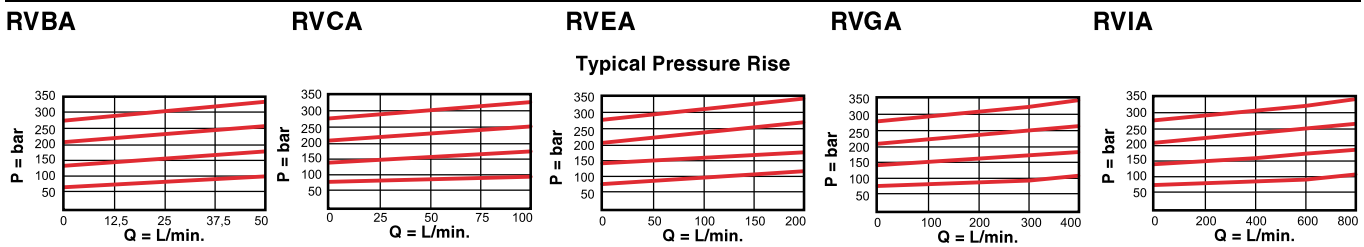


**VENTABLE, PILOT OPERATED, BALANCED PISTON**



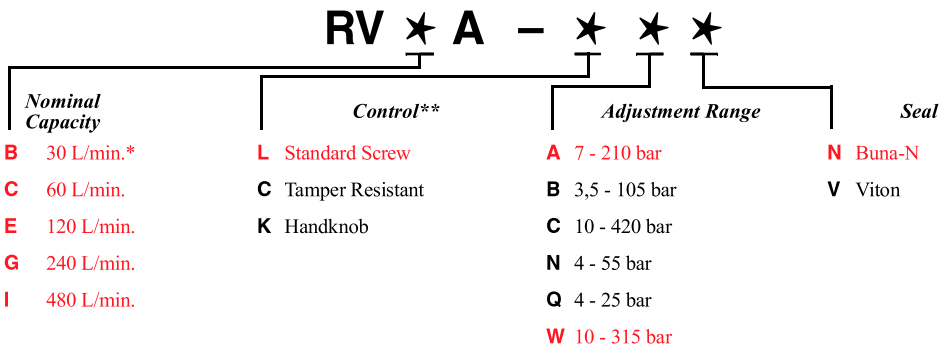
Capacity	Typical Cartridge Model Code	Cavity	Cartridge Dimensions					Installation Torque (Nm)
			a	b	c			
					L	C	K	
30 L/min.	<b>RVBA - LAN</b>	T - 163A	31	19,1	65	67	71	35/40
60 L/min.	<b>RVCA - LAN</b>	T - 11A	34,9	22,2	64	66	70	40/50
120 L/min.	<b>RVEA - LAN</b>	T - 2A	34,9	28,6	72	74	78	60/70
240 L/min.	<b>RVGA - LAN</b>	T - 17A	46	31,8	84	86	90	200/215
480 L/min.	<b>RVIA - LAN</b>	T - 19A	63,5	41,3	100	104	107	465/500

Performance Curves



- Maximum operating pressure = 350 bar
- Pressure at port 3 (vent) controls the valve below its setting.
- Back pressure on the tank port (port 2) is directly additive at a 1:1 ratio to the valve setting.
- Control pilot flow = RVBA, RVCA: 0,11 L/min. to 0,16 L/min.; RVEA: 0,16 L/min. to 0,25 L/min.; RVGA, RVIA: 0,25 L/min. to 0,33 L/min.
- Factory pressure setting established at 15 L/min.
- Typical response time 10 ms.
- Maximum leakage = RVBA, RVCA: 32,8 cc/min/70 bar, RVEA: 49,2 cc/min/70 bar, RVGA: 65,5 cc/min/70 bar, RVIA: 81,9 cc/min/70 bar.
- RVBA minimum setting for all spring ranges is 5 bar.
- Will accept maximum pressure at port 2.

**OPTION ORDERING INFORMATION** Model Codes printed in Red are Preferred Versions and most readily available



Adjustment Range Options:  
 A, B, C, and W are standard set at 70 bar.  
 N Option is standard set at 25 bar.  
 Q Option is standard set at 14 bar.  
 \* Minimum setting 5 bar on all ranges.  
 Customer may specify pressure setting.

Visit [www.sunhydraulics.com](http://www.sunhydraulics.com) for detailed and complete technical information on our full line of products.