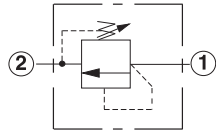
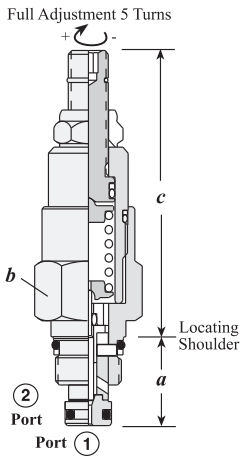


DIRECT ACTING, ADJUSTABLE PILOT RELIEF

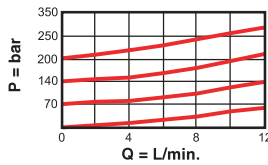


Capacity	Typical Cartridge Model Code	Cavity	Cartridge Dimensions					Installation Torque (Nm)
			a	b	c			
					L	C	K	
10 L/min.	RBAE - LAN	T - 8A	19,1	22,2	61	63	68	35/40

Performance Curves

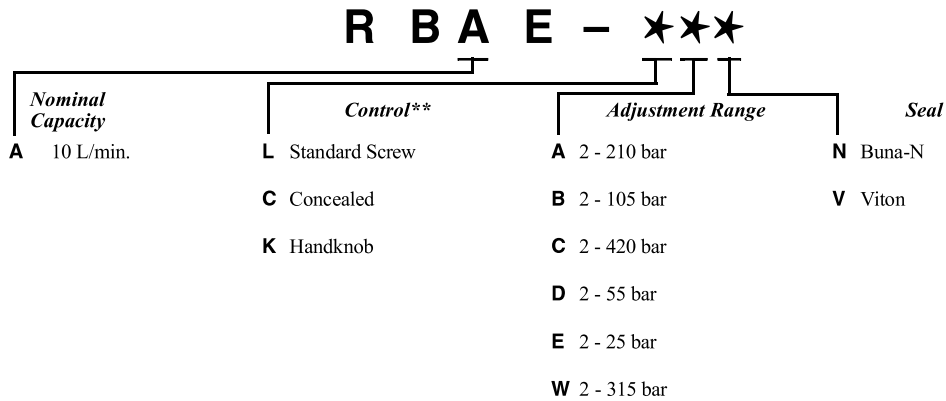
RBAE

Pressure vs. Flow



- Maximum operating pressure = 350 bar
- Maximum leakage = 0,3 cc/min. at reseal (reseal = 85% of cracking pressure).
- Ports 1 and 2 may be pressured to 350 bar.
- Back pressure at port 2 (outlet) is directly additive to the pressure setting at port 1 (inlet).
- The main stage valve should first be installed to the correct torque value followed by the T-8A pilot control section into the main stage valve to its required torque value.

OPTION ORDERING INFORMATION Model Codes printed in Red are Preferred Versions and most readily available



** See page 162 for information on Control Options

Adjustment Range Options:
 A, B, C, and W are standard set at 70 bar.
 D Option is standard set at 25 bar.
 E Option is standard set at 14 bar.
 Customer may specify pressure setting.

Visit www.sunhydraulics.com for detailed and complete technical information on our full line of products.