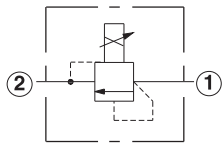
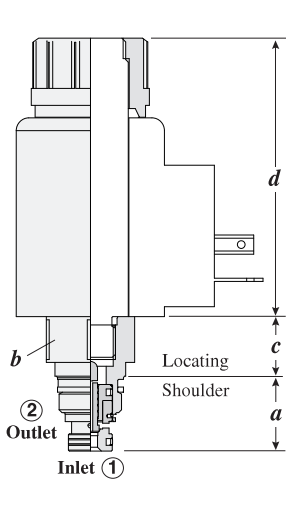


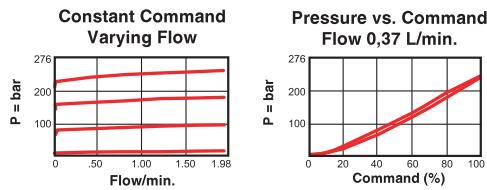
**ELECTRO-PROPORTIONAL PILOT RELIEF**



Capacity	Typical Cartridge Model Code	Cavity	Cartridge Dimensions				Installation Torque (Nm)
			a	b	c	d	
1 L/min.	<b>RBAP - MAN</b>	T - 8A	18,8	22,2	15,0	70,1	35/40

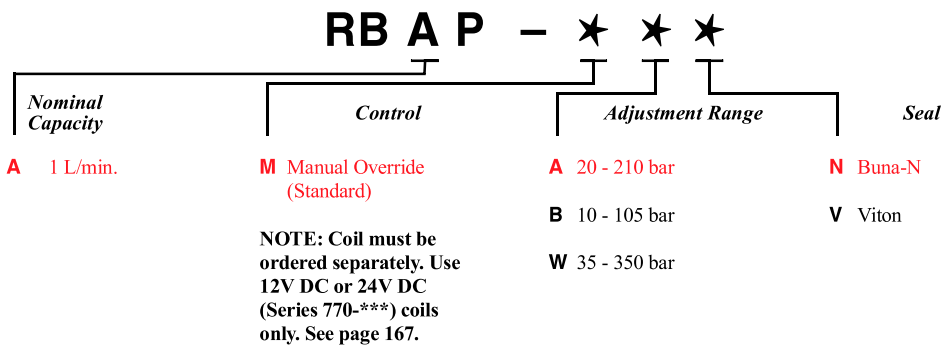
Performance Curves

**RBAP**



- Maximum operating pressure = 350 bar
- Maximum leakage = 24,6 cc/min at reseal
- Back pressure on the tank port (port 2) is directly additive at a 1:1 ratio to the valve setting
- Reseat exceeds 85% of crack
- Hysteresis with dither <4%
- Hysteresis with DC input <8%
- Linearity with dither <2%
- For optimum performance, an amplifier with current sensing and adjustable dither should be used. Dither should be adjustable between 100 - 250 Hz.

**OPTION ORDERING INFORMATION** Model Codes printed in Red are Preferred Versions and most readily available



Visit [www.sunhydraulics.com](http://www.sunhydraulics.com) for detailed and complete technical information on our full line of products.