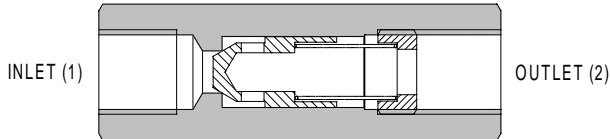
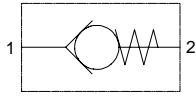




# FPR SERIES CHECK VALVE

## GUIDED POPPET LINE MOUNTED



### APPLICATION

A range of line mounted valves for convenient installation into hydraulic circuits. Valves allow flow at a low pressure drop (from 0.5 bar, 7 psi) in the free flow direction and prevent flow in the reverse direction. The range extends from 1/4" BSP to 1 1/2" BSP (12 litres/min 3 US GPM to 310 litres/min, 82 US GPM) nominal flow with cracking pressures from 0.5 to 5 bar (7 to 72.5 psi).

7

### FEATURES

All steel construction with hardened and precision ground poppet gives excellent flow capability and shut-off characteristics with good tolerance to particle (dirt) contaminated fluid.

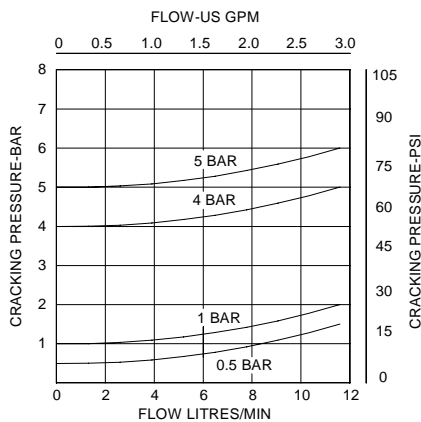
### SPECIFICATIONS

Figures based on: Oil Temp = 40°C Viscosity = 40 cSt

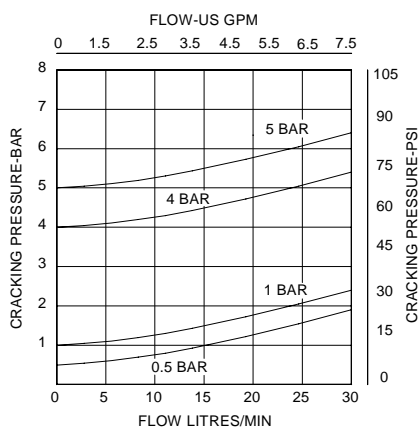
<b>Rated Flow</b>	310 litres/min (82 US GPM)
<b>Valve Material</b>	Working parts hardened and ground steel. External surfaces zinc plated
<b>Mounting Position</b>	Line mounted
<b>Weight</b>	FPR 1/4" 0.11 kg (0.24 lbs) FPR 3/8" 0.19 kg (0.42 lbs) FPR 1/2" 0.25 kg (0.55 lbs) FPR 3/4" 0.50 kg (1.10 lbs) FPR 1" 0.89 kg (1.95 lbs) FPR 1 1/4" 1.75 kg (3.85 lbs) FPR 1 1/2" 2.10 kg (4.63 lbs)
<b>Recommended Filtration Level</b>	BS5540/4 Class 18/13 (25 micron nominal)
<b>Operating Temp</b>	-20°C to +90°C
<b>Nominal Viscosity Range</b>	5 to 500 cSt

### PRESSURE DROP

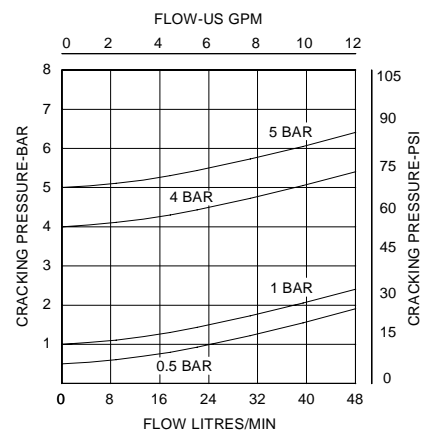
#### FPR 1/4"



#### FPR 3/8"

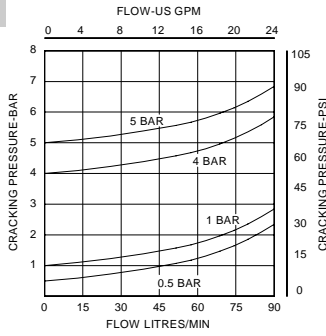


#### FPR 1/2"

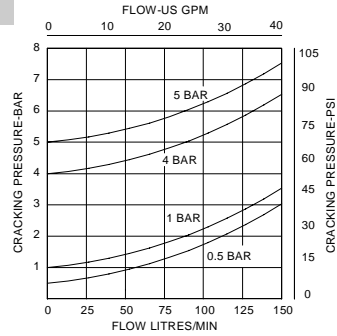


**PRESSURE DROP**

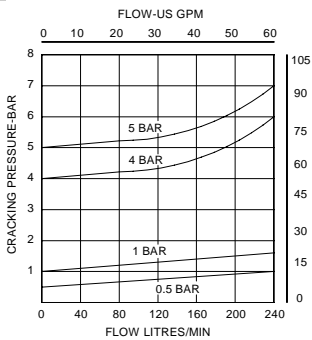
**FPR 3/4"**



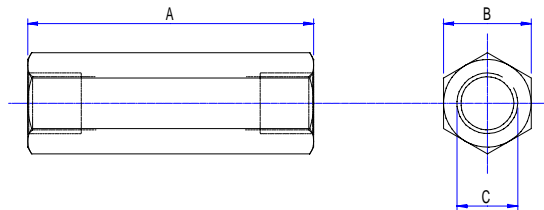
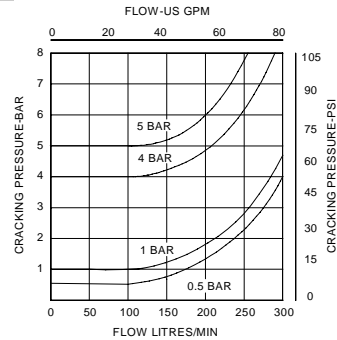
**FPR 1"**



**FPR 1 1/4"**



**FPR 1 1/2"**



Basic Code	Flow Rate	Pressure	A	B	C
FPR 1/4	12 litres/min ( 3 US GPM)	350 bar (5000 psi)	62	19	1/4" BSP
FPR 3/8	30 litres/min ( 8 US GPM)	350 bar (5000 psi)	68	24	3/8" BSP
FPR 1/2	45 litres/min (12 US GPM)	350 bar (5000 psi)	78	27	1/2" BSP
FPR 3/4	85 litres/min (22 US GPM)	300 bar (4300 psi)	88	36	3/4" BSP
FPR 1	140 litres/min (37 US GPM)	250 bar (3600 psi)	112	46	1" BSP
FPR 1 1/4	220 litres/min (58 US GPM)	250 bar (3600 psi)	142	55	1 1/4" BSP
FPR 1 1/2	310 litres/min (82 US GPM)	210 bar (3000 psi)	155	60	1 1/2" BSP

Where measurements are critical request certified drawings

**ORDERING CODE EXAMPLE**

**FPR 1/2**

**4.0**

Basic Code \_\_\_\_\_

**Cracking Pressure**

**0.5** = 0.5 bar

**1.0** = 1.0 bar

**4.0** = 4.0 bar

**5.0** = 5.0 bar

We reserve the right to change specifications without notice