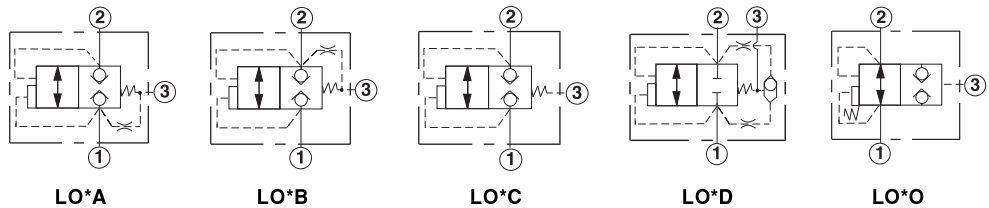
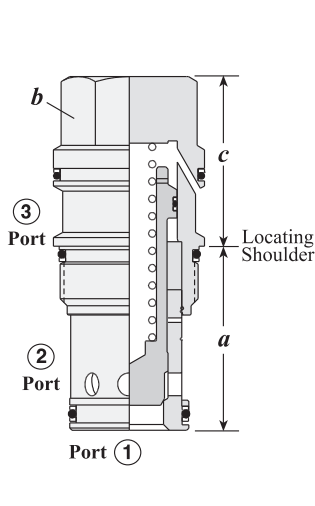
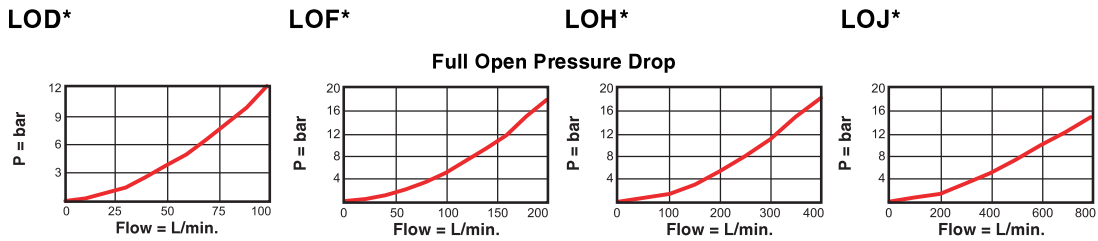


**UNBALANCED POPPET, PILOT-TO-CLOSE SWITCHING ELEMENT**



Nominal Capacity	Typical Cartridge Model Code	Cavity	Cartridge Dimensions				Installation Torque (Nm)
			a	b	X	E	
80 L/min.	<b>LODC – XDN</b>	T - 11A	34,9	22,2	28	28	40/50
160 L/min.	<b>LOFC – XDN</b>	T - 2A	34,9	28,6	35	35	60/70
320 L/min.	<b>LOHC – XDN</b>	T - 17A	46	31,8	46	46	200/215
640 L/min.	<b>LOJC – XDN</b>	T - 19A	63,5	41,3	59	59	465/500

Performance Curves



- Maximum operating pressure = 350 bar
- Area ratio: A3 to A1 = 1.8:1
- Area ratio: A3 to A2 = 2.25:1
- Control orifice diameter = LODA, LODB, LODD, LOFA, LOFB, LOFD: 0,53 mm, LOHA, LOHB, LOHD: 0,8 mm, LOJA, LOJB, LOJD: 0,9 mm.
- Pilot volume for complete shift = LOD\*: 0,6 c.c., LOF\*: 1,1 c.c., LOH\*: 4,1 c.c., LOJ\*: 6,9 c.c.
- These valves are pressure responsive at all three ports, therefore it is essential to consider all aspects of system operation through a complete cycle. Pressure changes at any one port may cause a valve to switch from a closed to an open position, or vice versa. All possible pressure changes in the complete circuit must be considered to assure a safe, functional system design.

**OPTION ORDERING INFORMATION** Model Codes printed in Red are Preferred Versions and most readily available

Nominal Capacity	Version	Control**	Cracking Pressure A, B, C, D Versions	Seal
<b>D</b> 80 L/min.	<b>A</b> Spring biased closed Port 1 pilot source	<b>X</b> Non-adjustable	<b>D</b> 3,5 bar at Port 1 (2 bar to close at Port 3 for <b>O</b> Version)	<b>N</b> Buna-N
<b>F</b> 160 L/min.	<b>B</b> Spring biased closed Port 2 pilot source	<i>Available in B and C Versions Only</i>		<b>V</b> Viton
<b>H</b> 320 L/min.	<b>C</b> Spring biased closed Port 3 pilot source	<b>E</b> SAE-4 Port in Hex Body, Port 3 blocked		
<b>J</b> 640 L/min.	<b>D</b> Spring biased closed higher of Ports 1 or 2 pilot source	<i>Available in D and F Capacities Only</i>		
	<b>O</b> Spring biased open Port 3 pilot source	<b>L</b> Stroke Adjustment		

\*\* See page 162 for information on Control Options

Visit [www.sunhydraulics.com](http://www.sunhydraulics.com) for detailed and complete technical information on our full line of products.