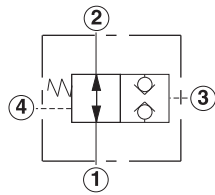
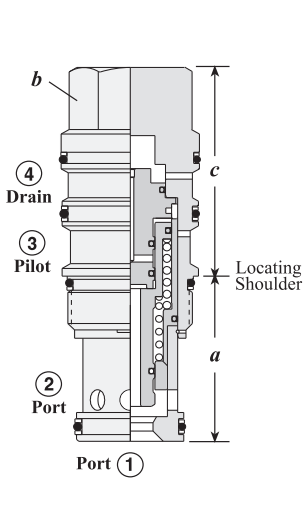


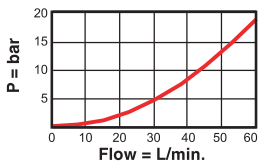
NORMALLY OPEN, DIRECT OPERATED



Nominal Capacity	Typical Cartridge Model Code	Cavity	Cartridge Dimensions			Installation Torque (Nm)
			a	b	c	
60 L/min.	DODS – XHN	T - 21A	34,9	22,2	46	40/50
120 L/min.	DOFS – XHN	T - 22A	34,9	28,6	51	60/70
240 L/min.	DOHS – XHN	T - 23A	46	31,8	63	200/215
480 L/min.	DOJS – XHN	T - 24A	63,5	41,3	81	465/500

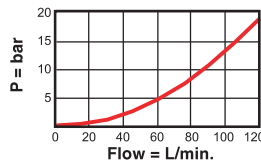
Performance Curves

DODS

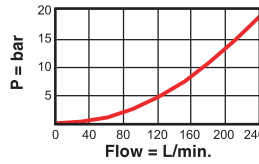


DOFS

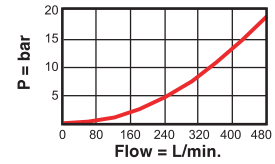
Fully Open Pressure Differential vs. Flow



DOHS

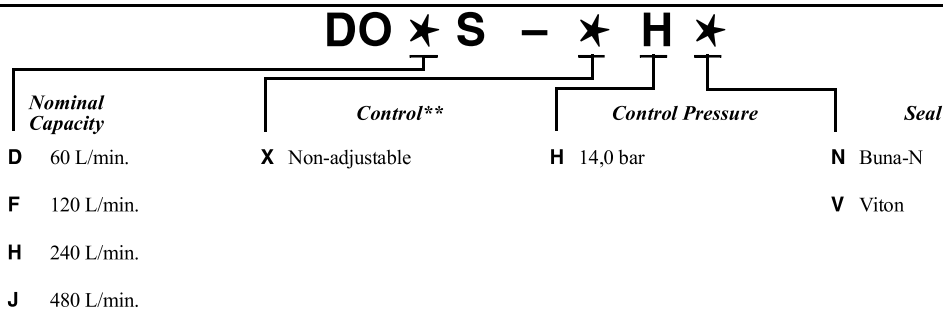


DOJS



- Maximum operating pressure = 350 bar (Port 1 and Port 2)
- Minimum pilot pressure to shift valve = DODS: 30 bar, DOFS, DOHS, DOJS: 20 bar,
- Maximum valve leakage, Port 1 to Port 2 or Port 2 to Port 1 = 0,4 cc/min.
- Pilot volume for complete shift = DODS: 0,16 c.c., DOFS: 0,33 c.c., DOHS: 0,82 c.c., DOJS: 2,8 c.c.
- Valve will open when the pilot pressure falls below 10 bar.
- Any back pressure at the drain port is directly additive to the required pilot pressure for reliable operation.

OPTION ORDERING INFORMATION Model Codes printed in Red are Preferred Versions and most readily available



** See page 162 for information on Control Options

Visit www.sunhydraulics.com for detailed and complete technical information on our full line of products.