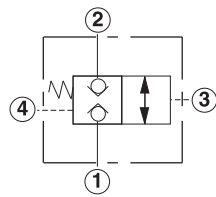
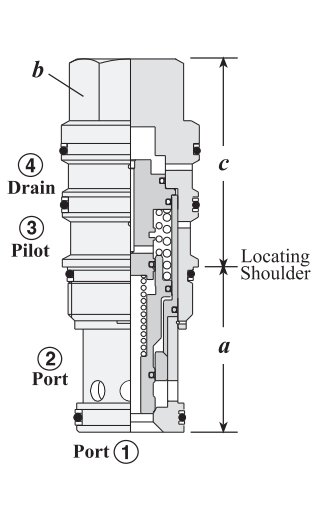


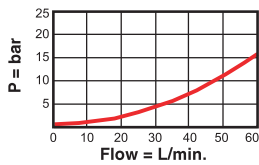
NORMALLY CLOSED, DIRECT OPERATED



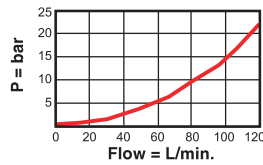
Nominal Capacity	Typical Cartridge Model Code	Cavity	Cartridge Dimensions			Installation Torque (Nm)
			a	b	c	
60 L/min.	DKDS – XHN	T - 21A	34,9	22,2	46	40/50
120 L/min.	DKFS – XHN	T - 22A	34,9	28,6	51	60/70
240 L/min.	DKHS – XHN	T - 23A	46	31,8	63	200/215
480 L/min.	DKJS – XHN	T - 24A	63,5	41,3	81	465/500

Performance Curves

DKDS

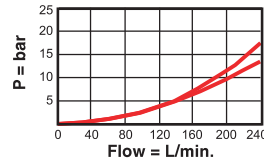


DKFS

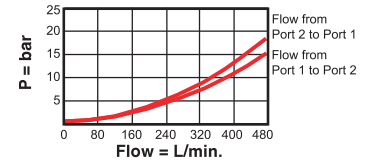


DKHS

Pilot Open Pressure Drop

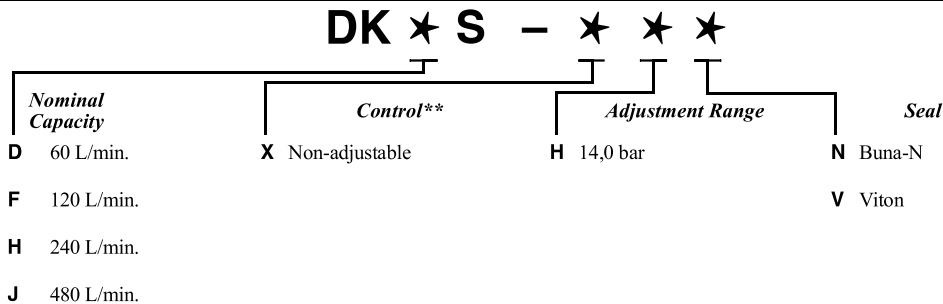


DKJS



- Maximum operating pressure = 350 bar
- Minimum pilot pressure to shift valve = DKDS: 30 bar, DKFS, DKHS, DKJS: 20 bar,
- Maximum valve leakage, Port 1 to Port 2 or Port 2 to Port 1 = 0,4 cc/min.
- Pilot volume for complete shift = DKDS: 0,16 c.c., DKFS: 0,33 c.c., DKHS: 0,82 c.c., DKJS: 2,8 c.c.
- Valve will reseal when the pilot pressure drops 85% below setting.
- Any back pressure at the drain port is directly additive to the required pilot pressure.

OPTION ORDERING INFORMATION Model Codes printed in Red are Preferred Versions and most readily available



** See page 162 for information on Control Options

Visit www.sunhydraulics.com for detailed and complete technical information on our full line of products.