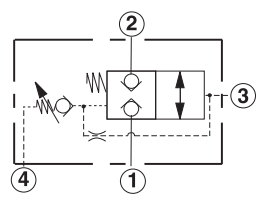
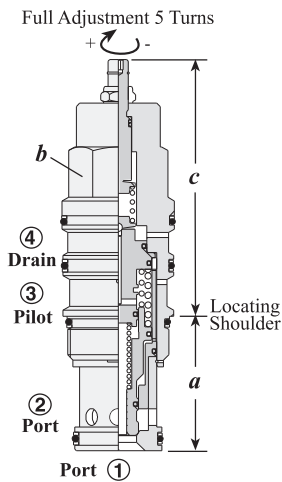


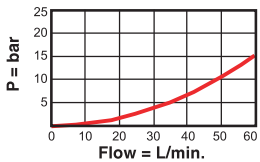
NORMALLY CLOSED, PRESSURE ADJUSTABLE



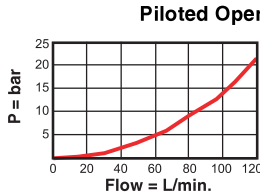
Nominal Capacity	Typical Cartridge Model Code	Cavity	a	b	Cartridge Dimensions			Installation Torque (Nm)
					L	C	K	
60 L/min.	DKDP - LAN	T - 21A	34,9	22,2	79	80,0	85,0	40/50
120 L/min.	DKFP - LAN	T - 22A	34,9	28,6	88	89,0	94,0	60/70
240 L/min.	DKHP - LAN	T - 23A	46	31,8	100	101,0	106,0	200/215
480 L/min.	DKJP - LAN	T - 24A	63,5	41,3	122	125,0	128,0	465/500

Performance Curves

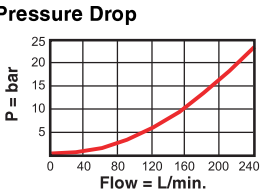
DKDP



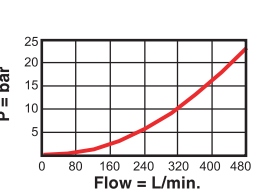
DKFP



DKHP



DKJP



- Maximum operating pressure = 350 bar
- Minimum pilot pressure to shift valve = DKDP: 30 bar, DKFP, DKHP, DKJP: 20 bar,
- Maximum valve leakage, Port 1 to Port 2 or Port 2 to Port 1 = 0,4 cc/min.
- Control pilot flow at shift = DKDP, DKFP: 0,4 L/min., DKHP, DKJP: 0,6 L/min.
- Any back pressure at the drain port is directly additive to the required pilot pressure.
- Valve will reseal when the pilot pressure falls to 85% of the cracking value.

OPTION ORDERING INFORMATION Model Codes printed in Red are Preferred Versions and most readily available

DK ★ P		- ★ ★ ★		Seal
Nominal Capacity	Control**	Nominal Adjustable Shift Pressure Range		
D 60 L/min.	L Standard Screw	A 21 - 210 bar		N Buna-N
F 120 L/min.	C Tamper Resistant	B 21 - 105 bar		V Viton
H 240 L/min.	K Handknob	W 21 - 315 bar		
J 480 L/min.				

** See page 162 for information on Control Options
 Adjustment Range Options:
 A, B, and W are standard set at 70 bar.
 Customer may specify pressure setting.

Visit www.sunhydraulics.com for detailed and complete technical information on our full line of products.