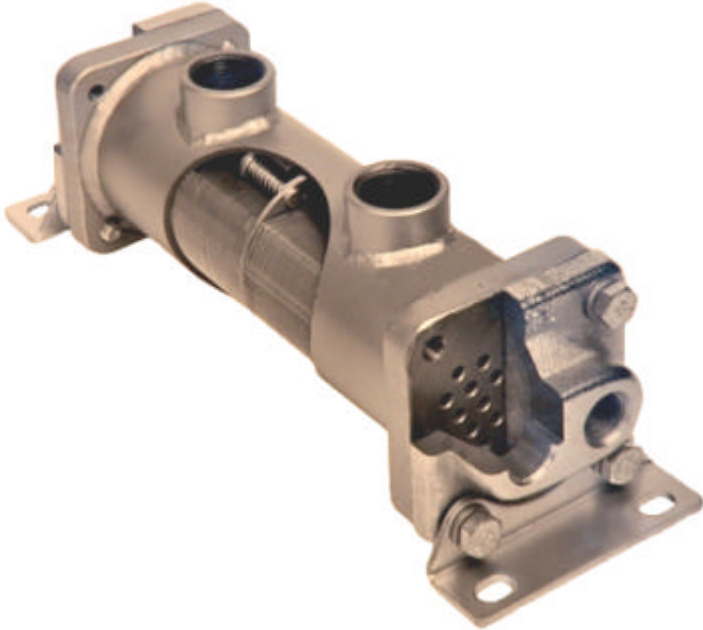


**THERMAL  
TRANSFER**

**EKM - COOLERS FOR FRESH- AND SEA-WATER USE**



**SOLID**

**COMPACT**

**HIGH EFFICIENCY**

Picture showing a cooler with thickwall chamber, Cu/Ni tubes and aluminium fins.

**DESCRIPTION**

The EKM - serie is a further development of a traditional tube-cooler for industrial and marine applications.

In spite of the small size it is with the large cooling - area a very efficient cooler with a possible heat-dissipation of 230 kW.

The seawater-coolers have additional nickel-coating in tubes and endcovers.

**ADVANTAGES**

Aluminium - fins and Cu/Ni-tubes garanties a maximum heat - transport.

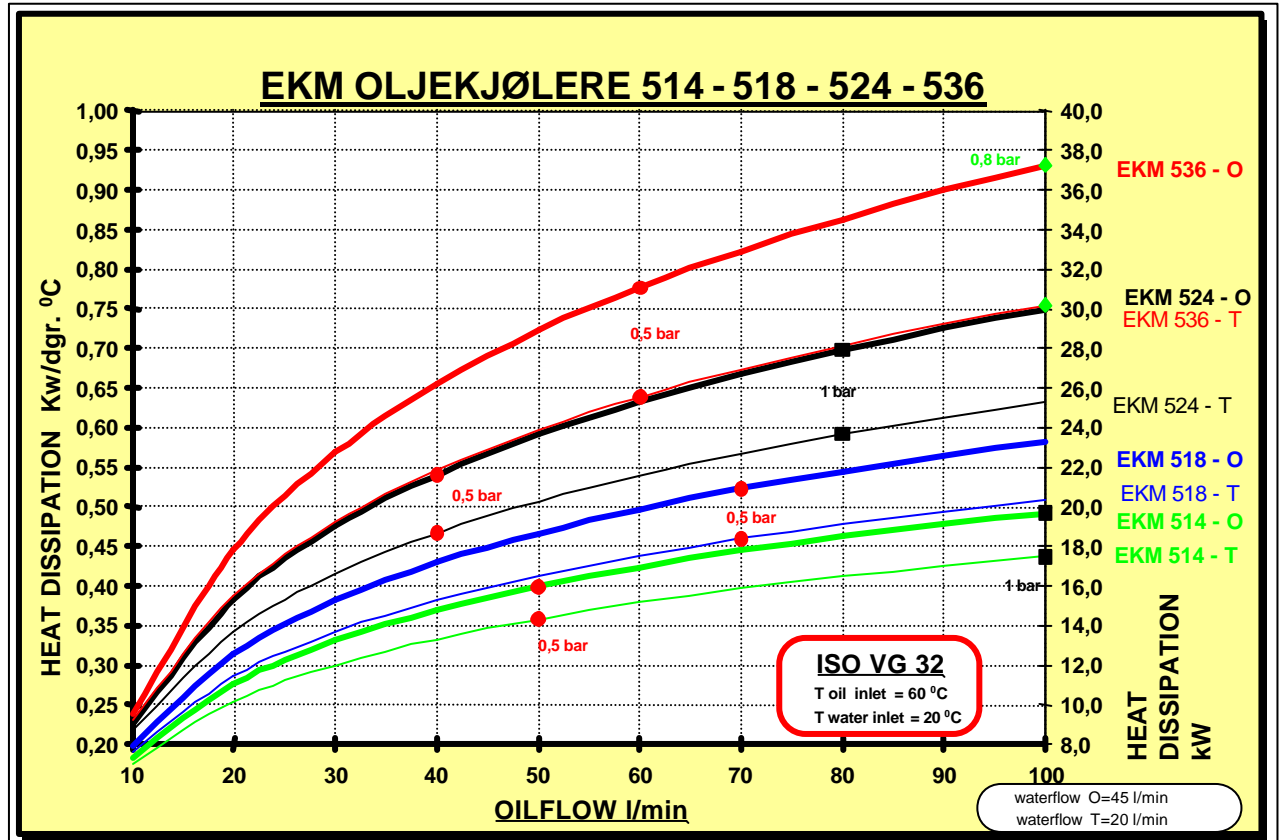
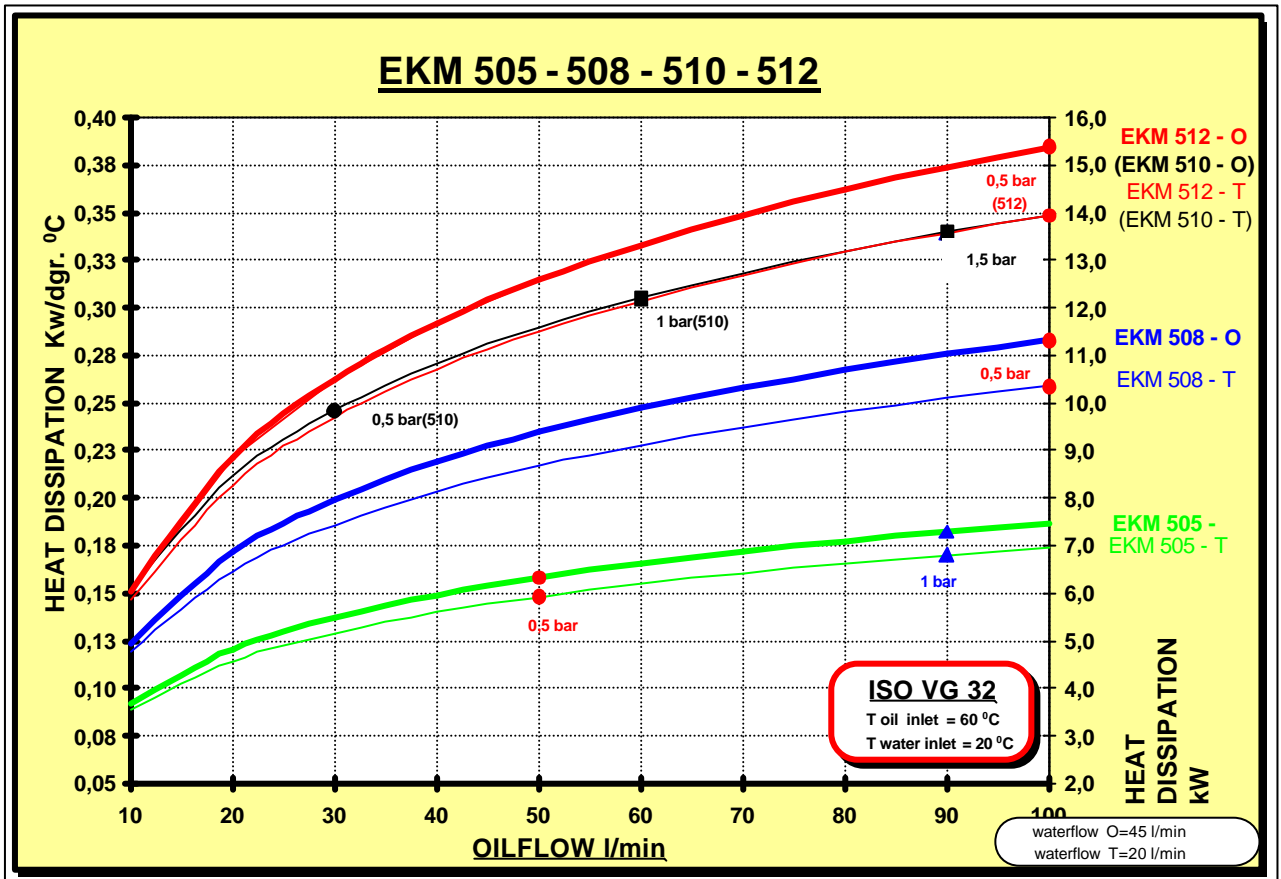
End - covers are fastened with screws for easy cleaning of tubes.

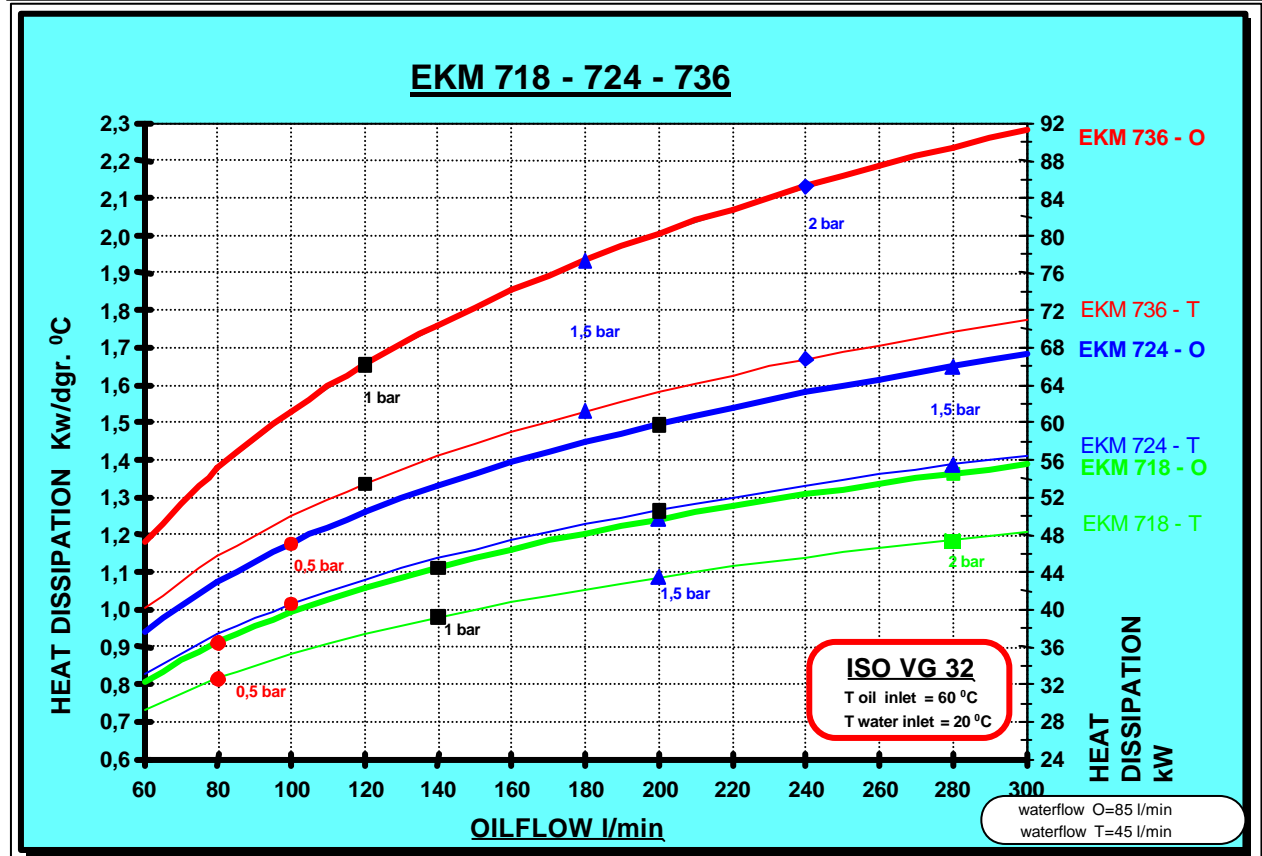
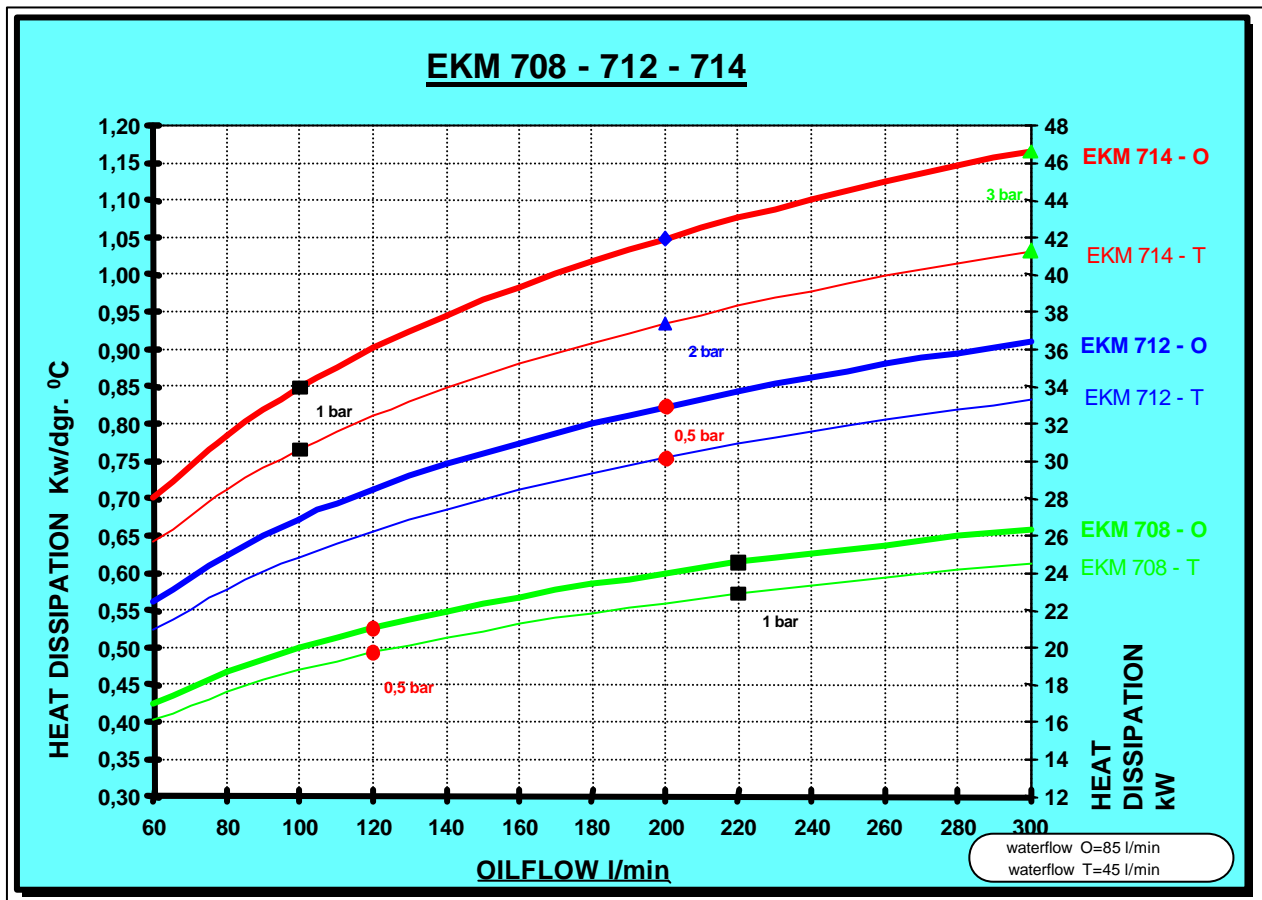
Mounting-flanches make installation easy and flexible.

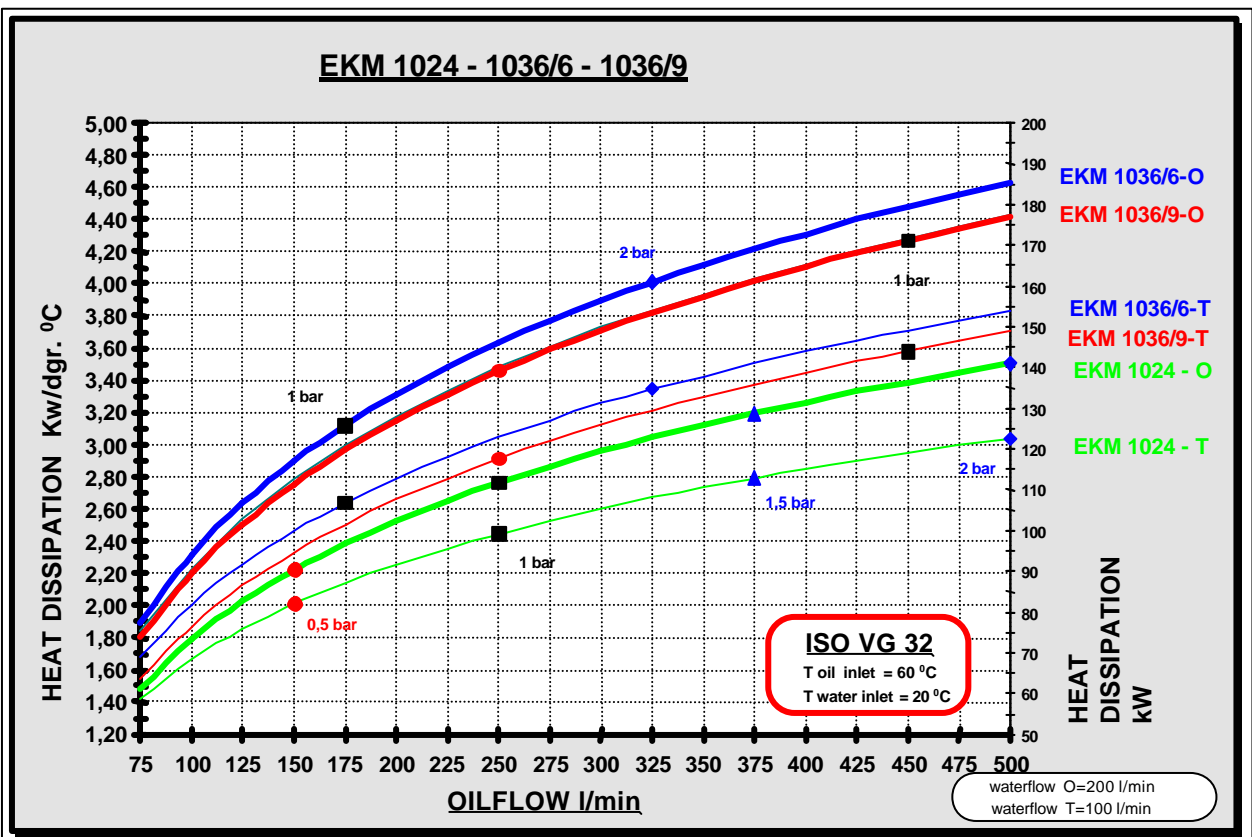
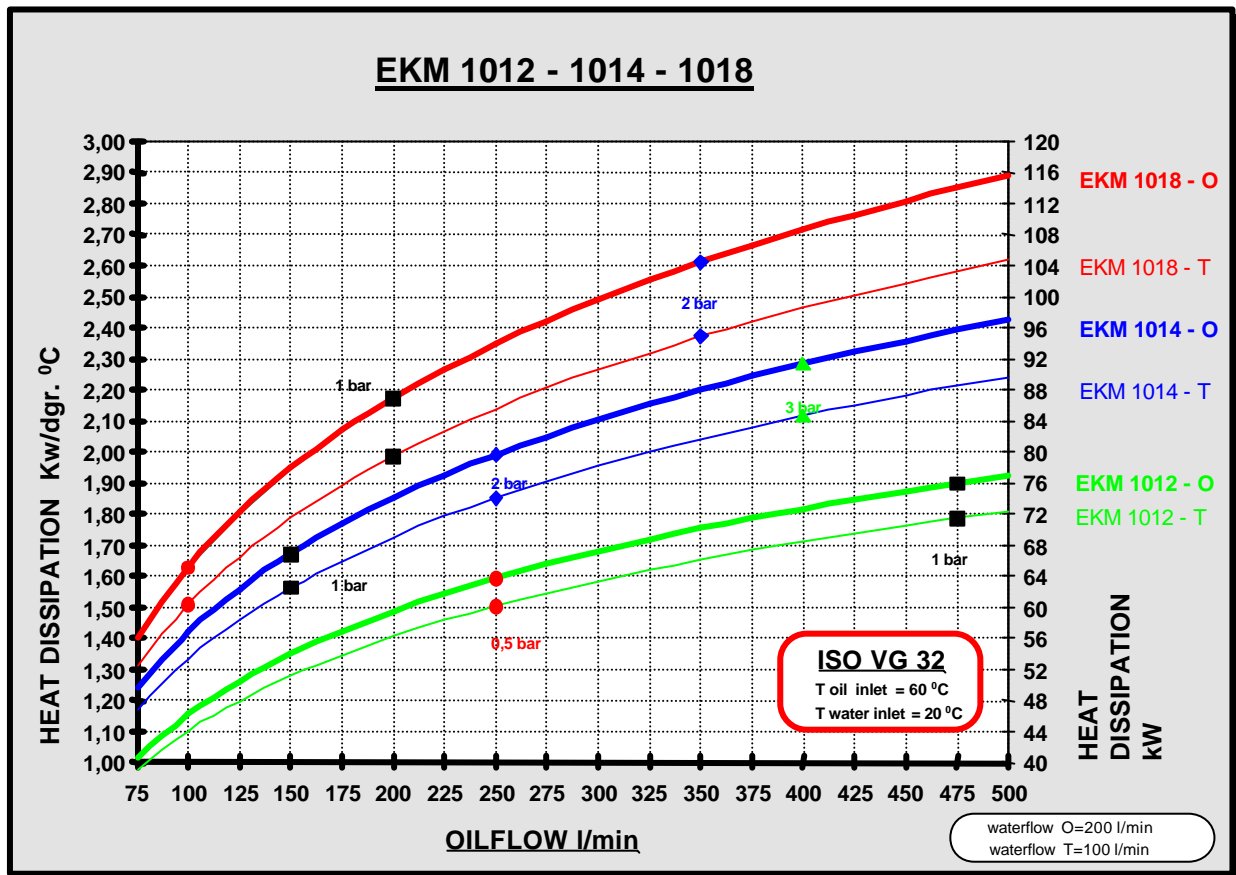
A build inn bypass - valve can be supplied (patented).

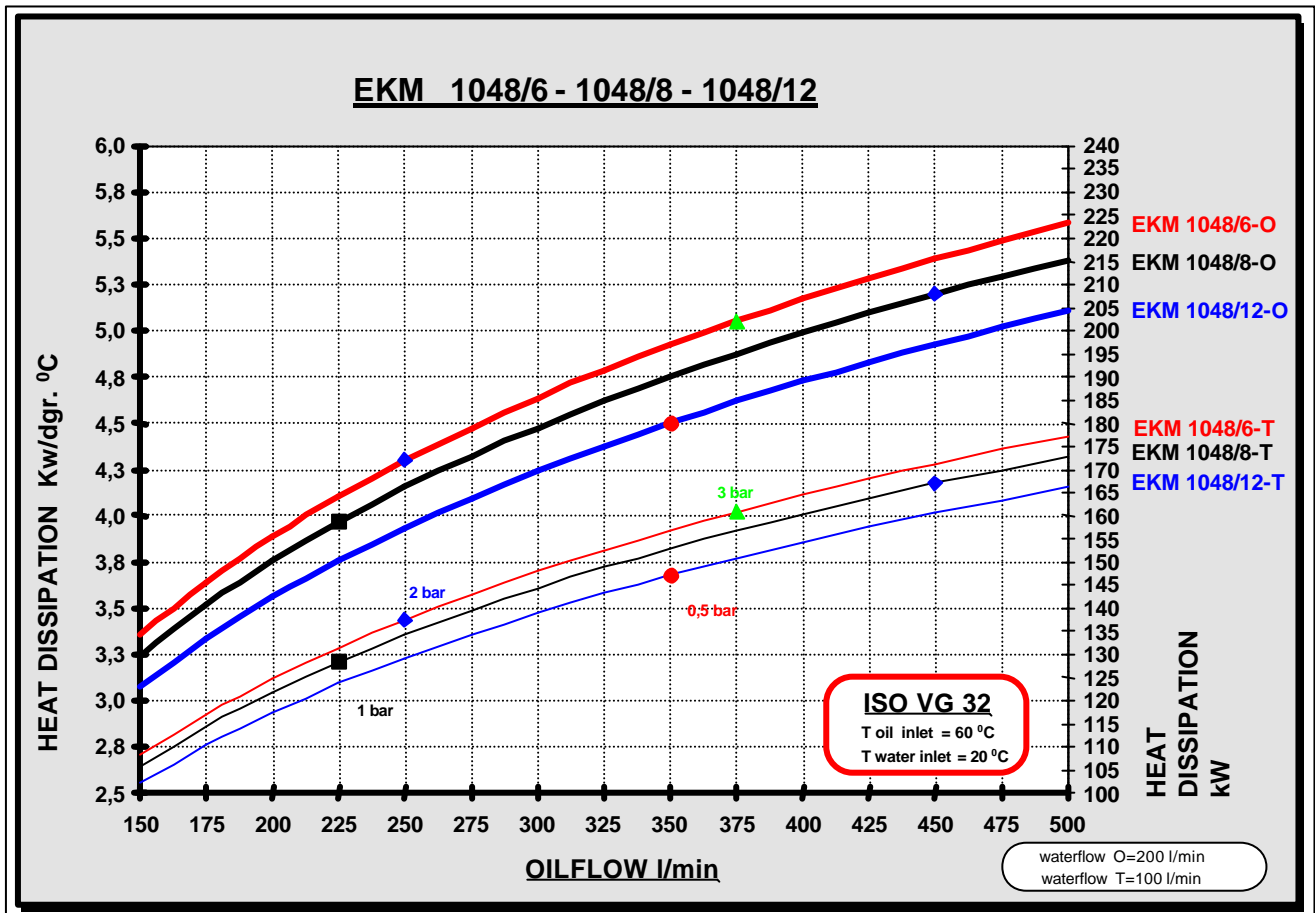
Pressure range:  
Oil-side : 35 bar  
Water-side: 16 bar

## EKM Shell and Tube Heat Exchanger







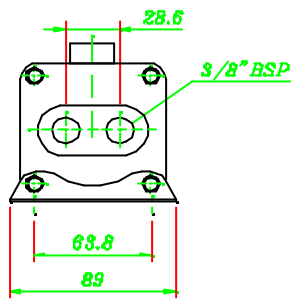


**CODE :**

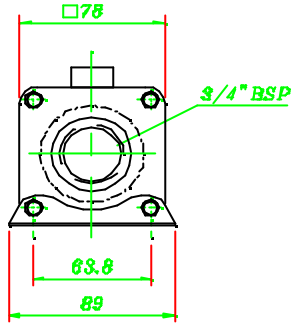
	<b>EKM</b>	-	<b>1014</b>	-	<b>O</b>	-	<b>R</b>	-	<b>CN</b>	-	<b>SW</b>
TYPE											
SIZE											
O : "ONE PASS"											
T : "TWO PASS"											
R : ONE WAY VALVE											
COPPER/NICKEL											
SW SEAWATER											

**For seawater applications : use of additional zinc anodes is recommended**

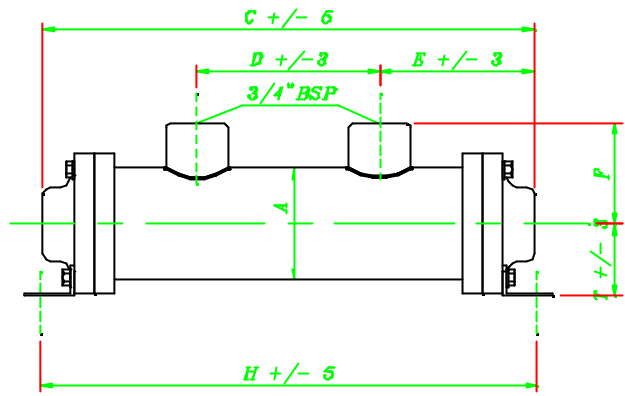
# EKM 500 SERIES



T - TYPE

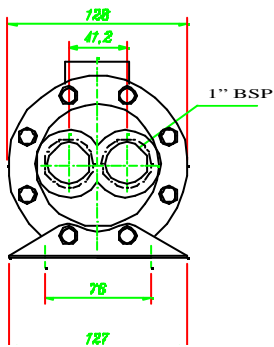


O - TYPE

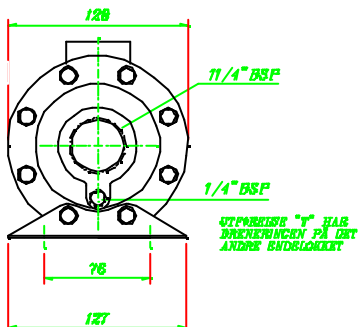


TYPE :	A	B	C	D	E	F	H	T	WEIGHT kg
EKM-505-O	64,8	131,8	187,5	55,6 (3/4"BSP)	66,0	53,7	198,0 (9x13)	41,2	2,8
EKM-505-T	64,8	131,8	187,5	55,6 (3/4"BSP)	65,0	53,7	198,0 (9x13)	41,2	
EKM-508-O	64,8	208,0	263,5	97,8 (3/4"BSP)	82,8	57,9	266,0 (9x13)	41,2	3,0
EKM-508-T	64,8	208,0	263,5	97,8 (3/4"BSP)	81,0	57,9	266,0 (9x13)	41,2	
EKM-510-O	64,8	259,0	314,5	148,6 (3/4"BSP)	82,8	57,9	316,0 (9x13)	41,2	3,2
EKM-510-T	64,8	259,0	314,5	148,6 (3/4"BSP)	81,0	57,9	316,0 (9x13)	41,2	
EKM-512-O	64,8	309,6	365,3	199,4 (3/4"BSP)	82,8	57,9	366,8 (9x13)	41,2	3,4
EKM-512-T	64,8	309,6	365,3	199,4 (3/4"BSP)	81,0	57,9	366,8 (9x13)	41,2	
EKM-514-O	64,8	360,4	416,0	250,2 (3/4"BSP)	82,8	57,9	417,6 (9x13)	41,2	3,6
EKM-514-T	64,8	360,4	416,0	250,2 (3/4"BSP)	81,0	57,9	417,6 (9x13)	41,2	
EKM-518-O	64,8	462,0	517,6	351,8 (3/4"BSP)	82,8	57,9	519,2 (9x13)	41,2	3,9
EKM-518-T	64,8	462,0	517,6	351,8 (3/4"BSP)	81,0	57,9	519,2 (9x13)	41,2	
EKM-524-O	64,8	614,4	670,0	504,2 (3/4"BSP)	82,8	57,9	673,2 (9x13)	41,2	4,3
EKM-524-T	64,8	614,4	670,0	504,2 (3/4"BSP)	81,0	57,9	673,2 (9x13)	41,2	
EKM-536-O	64,8	919,2	975,0	809,0 (3/4"BSP)	82,8	57,9	976,4 (9x13)	41,2	4,7
EKM-536-T	64,8	919,2	975,0	809,0 (3/4"BSP)	81,0	57,9	976,4 (9x13)	41,2	

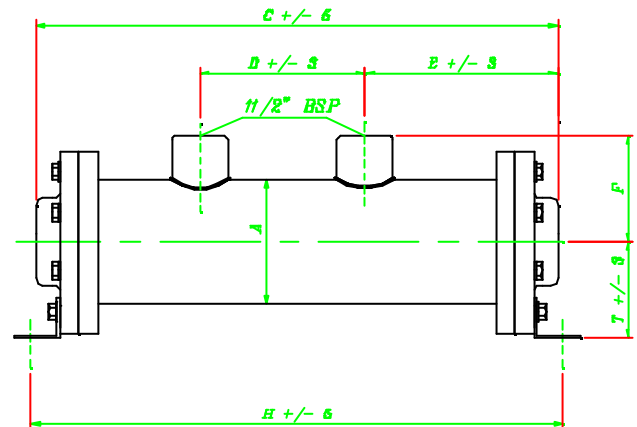
# EKM 700 SERIES



T - TYPE

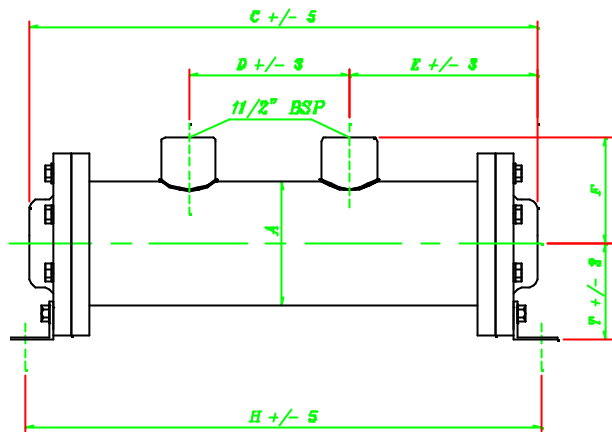
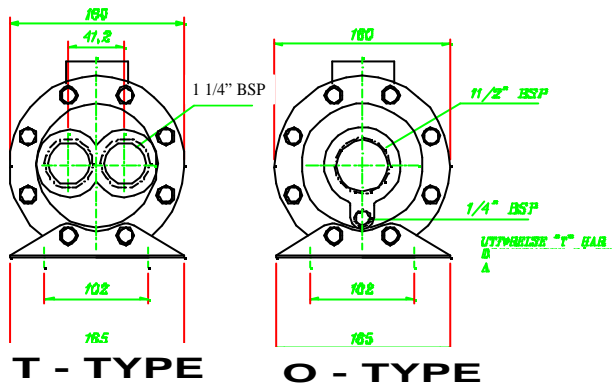


O - TYPE



TYPE :	A	B	C	D	E	F	H	T	WEIGHT kg
EKM-708-O	89,4	208,0	283,0	76,2 (11/2"BSP)	100,6	70,9	272,0 (11x19)	65,8	6,2
EKM-708-T	89,4	208,0	246,0	76,2 (11/2"BSP)	88,0	70,9	272,0 (11x19)	65,8	
EKM-712-O	89,4	309,6	385,6	177,8 (11/2"BSP)	100,6	70,9	373,6 (11x19)	65,8	7,2
EKM-712-T	89,4	309,6	347,6	177,8 (11/2"BSP)	88,0	70,9	373,6 (11x19)	65,8	
EKM-714-O	89,4	360,4	435,4	228,6 (11/2"BSP)	100,6	70,9	424,4 (11x19)	65,8	7,7
EKM-714-T	89,4	360,4	389,4	228,6 (11/2"BSP)	88,0	70,9	424,4 (11x19)	65,8	
EKM-718-O	89,4	462,0	537,0	330,2 (11/2"BSP)	100,6	70,9	526,0 (11x19)	65,8	8,4
EKM-718-T	89,4	462,0	500,0	330,2 (11/2"BSP)	88,0	70,9	526,0 (11x19)	65,8	
EKM-724-O	89,4	614,4	689,4	482,6 (11/2"BSP)	100,6	70,9	678,4 (11x19)	65,8	9,4
EKM-724-T	89,4	614,4	652,4	482,6 (11/2"BSP)	88,0	70,9	678,4 (11x19)	65,8	
EKM-736-O	89,4	919,2	994,1	787,4 (11/2"BSP)	100,6	70,9	983,2 (11x19)	65,8	10,4
EKM-736-T	89,4	919,2	957,1	787,4 (11/2"BSP)	88,0	70,9	983,2 (11x19)	65,8	

# EKM 1000 SERIES



TYPE :	A	B	C	D	E	F	H	T	WEIGHT kg
EKM-1012-O	128,3	305,3	389,4	157,0 (11/2"BSP)	116,3	94,5	392,4 (11x25)	101,6	16,6
EKM-1012-T	128,3	305,3	363,4	157,0 (11/2"BSP)	113,0	94,5	392,4 (11x25)	101,6	
EKM-1014-O	128,3	356,1	440,2	207,8 (11/2"BSP)	116,3	94,5	443,2 (11x25)	101,6	17,3
EKM-1014-T	128,3	356,1	414,2	207,8 (11/2"BSP)	113,0	94,5	443,2 (11x25)	101,6	
EKM-1018-O	128,3	457,7	541,2	309,4 (11/2"BSP)	116,3	94,5	544,8 (11x25)	101,6	19,1
EKM-1018-T	128,3	457,7	516,2	309,4 (11/2"BSP)	113,0	94,5	544,8 (11x25)	101,6	
EKM-1024-O	128,3	610,1	694,2	461,8 (11/2"BSP)	116,3	94,5	697,2 (11x25)	101,6	22,2
EKM-1024-T	128,3	610,1	668,2	461,8 (11/2"BSP)	113,0	94,5	697,2 (11x25)	101,6	
EKM-1036-O	128,3	914,9	999,0	766,6 (11/2"BSP)	116,3	94,5	1002,0 (11x25)	101,6	24,7
EKM-1036-T	128,3	914,9	976,0	766,6 (11/2"BSP)	113,0	94,5	1002,0 (11x25)	101,6	
EKM-1048-O	128,3	1219,7	1303,2	1071,4 (11/2"BSP)	116,3	94,5	1306,8 (11x25)	101,6	27,2
EKM-1048-T	128,3	1219,7	1281,2	1071,4 (11/2"BSP)	113,0	94,5	1306,8 (11x25)	101,6	

## TECHNICAL DATA :

Max working pressure oil-side	:	35 bar
Max working pressure water-side	:	16 bar
Max working-temperature	:	120 °C

## Materials :

Housing, flanches	:	Steel
Cooling-fins	:	Aluminium
Tubes	:	90/10 Cupper/Nickel
Endcovers	:	Cast iron
Sealings	:	Nitrile

**Seawater units with additional Nickel-coating.**

**Max flow lpm :**

	WATER	
	ONE PASS	TWO PASS
EKM - 500	45	22
EKM - 700	90	45
EKM - 1000	210	105

