

Sink-anoder for Rørkjølere



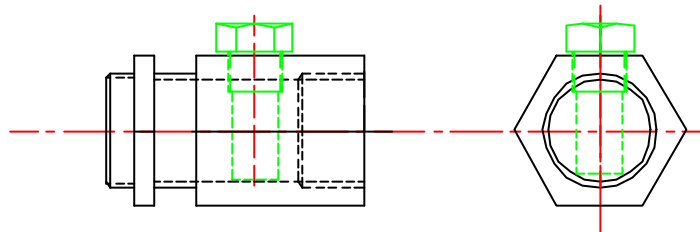
SERVI
MOTION CONTROL

Sinkanoder forlenger kjølerens levetid.

Anoden settes inn på sjøvannssiden i vann-tilkoblingen (eventuelt også i utløpet)



Adapteret for sinkanoden er laget i sjøvannsbestandig messing og er påsatt kontramutter for innspenning i kjøler.

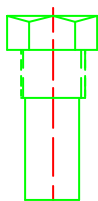
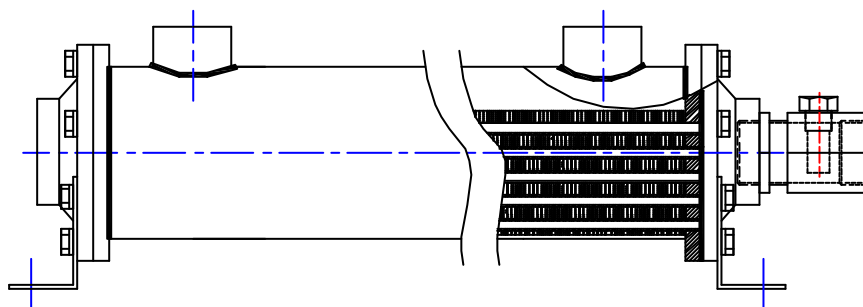


Art. nr : 217235 : EKM Sinkanode 3/4" BSP (for EKM500-O serie)

Art. nr : 217195 : EKM Sinkanode 1" BSP (for EKM700-T serie)

Art. nr : 217177 : EKM Sinkanode 1 1/4" BSP (for EKM1000-T/EKM700-O serie)

Art. nr : 217117 : EKM Sinkanode 1 1/2" BSP (for EKM1000-O serie)



Art. nr : 217817 : EKM Sinkanode med 1/2" BSP plugg

(Reserveplugg for 217177/217117)

Art. nr : 217275 : EKM Sinkanode med 3/8" BSP plugg

(Reserveplugg for 217177/217117)