



# Stainless Steel Compressed Air Treatment Products

**E**

**Particulate Filters ..... E3**  
 SF1 ..... E4  
 SF2 ..... E6

**Coalescing Filters..... E9**  
 SM1 ..... E10  
 SM2 ..... E12

**Regulators ..... E15**  
 SR1 ..... E16  
 SR2 ..... E18

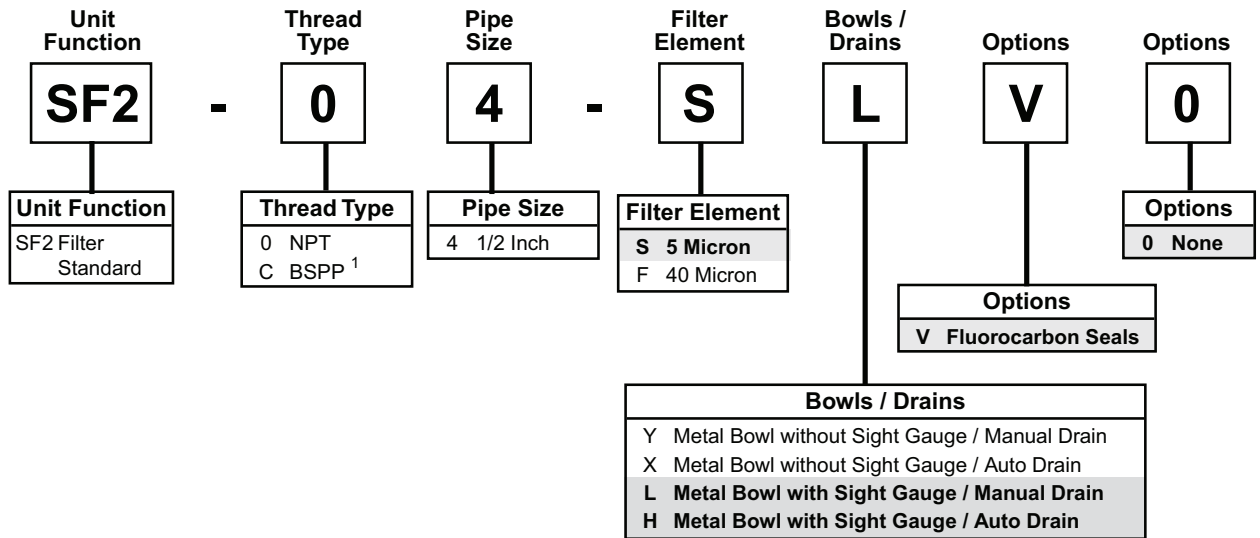
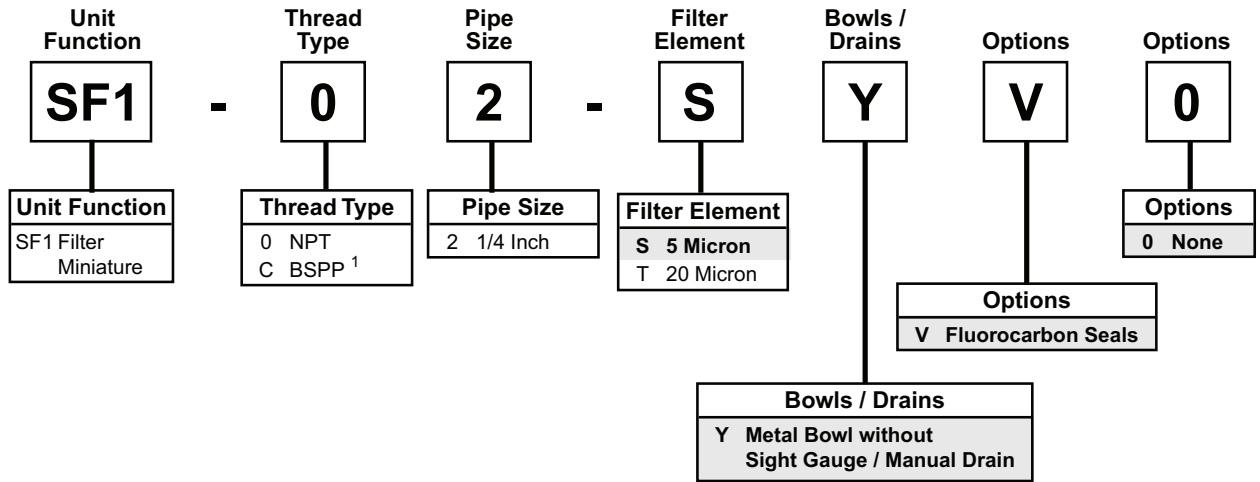
**Filter / Regulators ..... E21**  
 SB1 ..... E22  
 SB2 ..... E24

**Lubricators ..... E27**  
 SL2 ..... E28

# Notes

E

# Particulate Filter Numbering System    = "Most Popular"



<sup>1</sup> ISO, R228 (G Series)

"SF" Series Filters, Type "A" 5 micron elements: All Wilkerson Type "A" 5 micron elements meet or exceed ISO Class 3 for maximum particle size and concentration of solid contaminants.

**NOTE:** All classes above refer to International Standards Organization (ISO) standard 8573-1, pertaining to maximum particle size and concentration of solid contaminants, and maximum oil content.

**Note:** When selecting from the options columns, please enter letters in alphabetical order for positions 7, 8, and 9. For example:

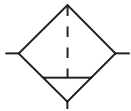
**SF1 - 0 2 - S Y V 0**



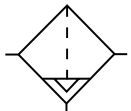
# Filter – Miniature

## SF1

= "Most Popular"



Manual Drain



Auto Drain



SF1-02-SYV0

### Features

- Stainless Steel Construction Handles Most Corrosive Environments
- Fluorocarbon Seals Standard
- Meets NACE Specifications MR-01-75/ISO 15156
- 1/8" Female Threaded Drain
- High Flow: 1/4" - 23 SCFM<sup>§</sup>

<sup>§</sup>SCFM = Standard cubic feet per minute at 90 PSIG inlet and 5 PSIG pressure drop.

### Specifications

Flow Capacity*	Port Size	5 Micron
	1/4	23 SCFM
Bowl Capacity		1.0 Ounce
Filter Rating		5 Micron
Port Threads		1/4 Inch
Pressure & Temperature Ratings –		
Metal Bowl –	0 to 300 PSIG (0 to 20.7 bar)	0°F to 180°F (-18°C to 82°C)
Auto Pulse Drain –	10 to 175 PSIG (0.7 to 12 bar)	32°F to 150°F (0°C to 66°C)

**Note: Air must be dry enough to avoid ice formation at temperatures below 32°F (0°C).**

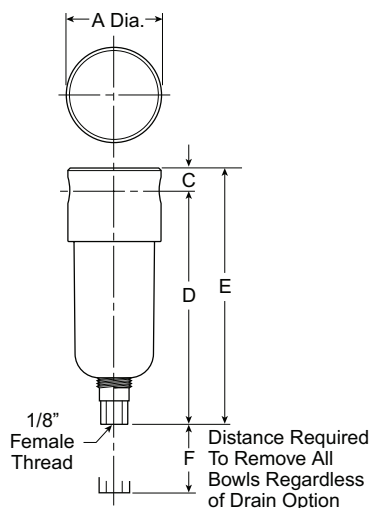
Useful Retention**	0.4 Ounce
Weight	0.6 lb. (0.27 kg)

\* Inlet pressure 90 PSIG (6.2 bar) and 5 PSID (0.3 bar) pressure drop.  
 \*\* Useful Retention refers to volume below the quiet zone baffle.

### Materials of Construction

Body	316 Stainless Steel
Bowl	316 Stainless Steel
Deflector	Acetal
Drain	316 Stainless Steel
Element Holder	Acetal
Filter Element	Polyethylene
Seals	Fluorocarbon

E



### Dimensions

Models	Inches (mm)	A	C	D	E	F
Miniature Unit SF1-02-XXXX		1.57 (40)	0.31 (8)	3.69 (94)	4.00 (102)	1.58 (40)

= "Most Popular"

### SF1 Filter Kits & Accessories

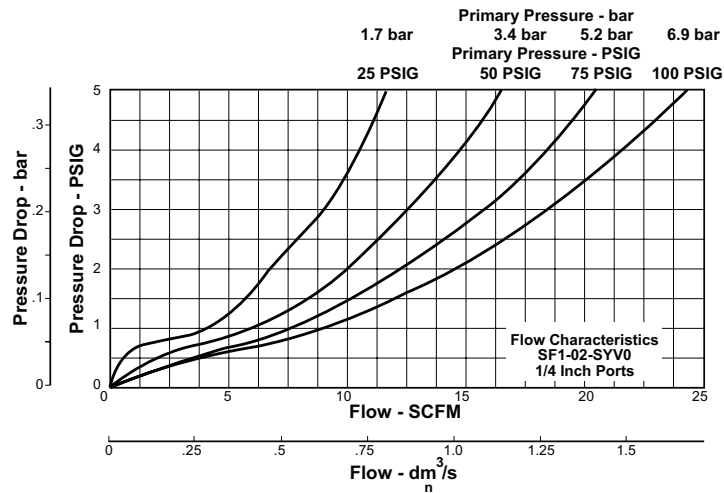
Filter Element Kits –

- Particulate (5 Micron)..... SRP-96-001
- Particulate (20 Micron)..... SRP-96-002

Manual Drain –

- Small (Old) ..... SRP-96-008
- Large (New) ..... SAP05481

Pipe Nipple – 1/4" 316 Stainless Steel ..... SRP-96-009



E

### Ordering Information

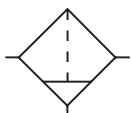
Model Type	Port Size	Model Number
Manual Drain	1/4	SF1-02-SYV0

Options - To order an option supplied with the unit model, add the appropriate coded suffix letter in the designated position of the model number.

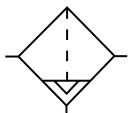
# Filter – Standard

## SF2

= "Most Popular"



Manual Drain



Auto Drain

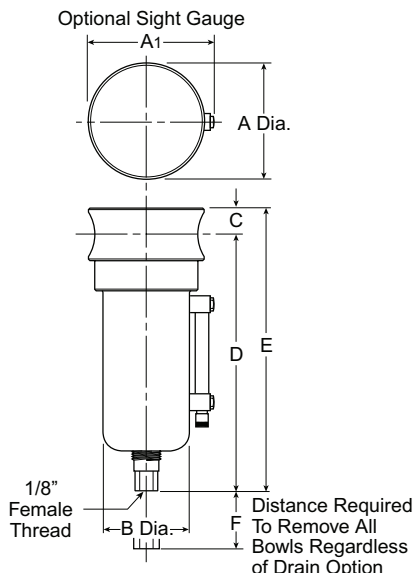


**SF2-04-SLV0**

### Features

- Stainless Steel Construction Handles Most Corrosive Environments
- Meets NACE Specifications MR-01-75/ISO 15156
- 1/8" Female Threaded Drain
- High Flow: 1/2" - 70 SCFM<sup>§</sup>

<sup>§</sup> SCFM = Standard cubic feet per minute at 90 PSIG inlet and 5 PSIG pressure drop.



### Dimensions

Models	Inches (mm)	A	A1	B	C	D	E	F
Miniature Unit SF2-04-XXXX		2.38 (60)	2.50 (64)	1.75 (44)	0.56 (14)	5.00 (127)	5.56 (141)	2.12 (54)

### Specifications

Flow Capacity*	Port Size	5 Micron
	1/2	70 SCFM
Bowl Capacity		4.0 Ounces
Filter Rating		5 Micron
Port Threads		1/2 Inch
Pressure & Temperature Ratings –		
Metal Bowl –		0 to 300 PSIG (0 to 20.7 bar) 0°F to 180°F (-18°C to 82°C)
Metal Bowl with Sight Gauge –		0 to 250 PSIG (0 to 17.2 bar) 0°F to 150°F (-18°C to 66°C)
Automatic Float Drain –		0 to 175 PSIG (0 to 12 bar) 32°F to 150°F (0°C to 66°C)

**Note: Air must be dry enough to avoid ice formation at temperatures below 32°F (0°C).**

Useful Retention**	1.7 Ounce
Weight	1.9 lb. (0.85 kg)

\* Inlet pressure 90 PSIG (6.2 bar) and 5 PSID (0.3 bar) pressure drop.  
\*\* Useful Retention refers to volume below the quiet zone baffle.

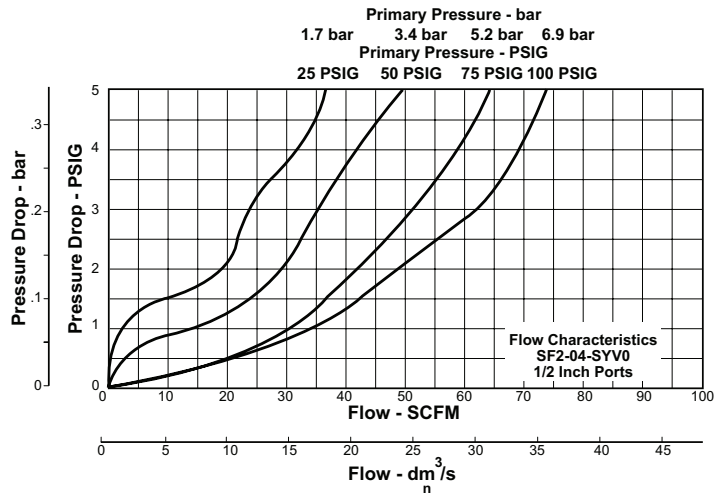
### Materials of Construction

Body	316 Stainless Steel
Bowl	316 Stainless Steel
Deflector	Acetal
Drain	316 Stainless Steel
Element Holder	Acetal
Filter Element	Polyethylene
Seals	Fluorocarbon
Sight Gauge	Isoplast

= "Most Popular"

### SF2 Filter Kits & Accessories

- Drain Kit –
  - Automatic Drain ..... SRP-96-027
- Manual Drain –
  - Small (Old) ..... SRP-96-008
  - Large (New) ..... SAP05481
- Filter Element Kits –
  - Particulate (40 Micron) ..... SRP-96-004
  - Particulate (5 Micron) ..... SRP-96-003
- Liquid Level Sight Gauge Kit ..... SRP-96-026
- Pipe Nipple – 1/2" 316 Stainless Steel ..... SRP-96-010



### Ordering Information

Model Type	Port Size	Model Number	Model Number
Manual Drain	1/2	SF2-04-SLV0	—
Automatic Drain	1/2	—	SF2-04-SHV0

Options - To order an option supplied with the unit model, add the appropriate coded suffix letter in the designated position of the model number.

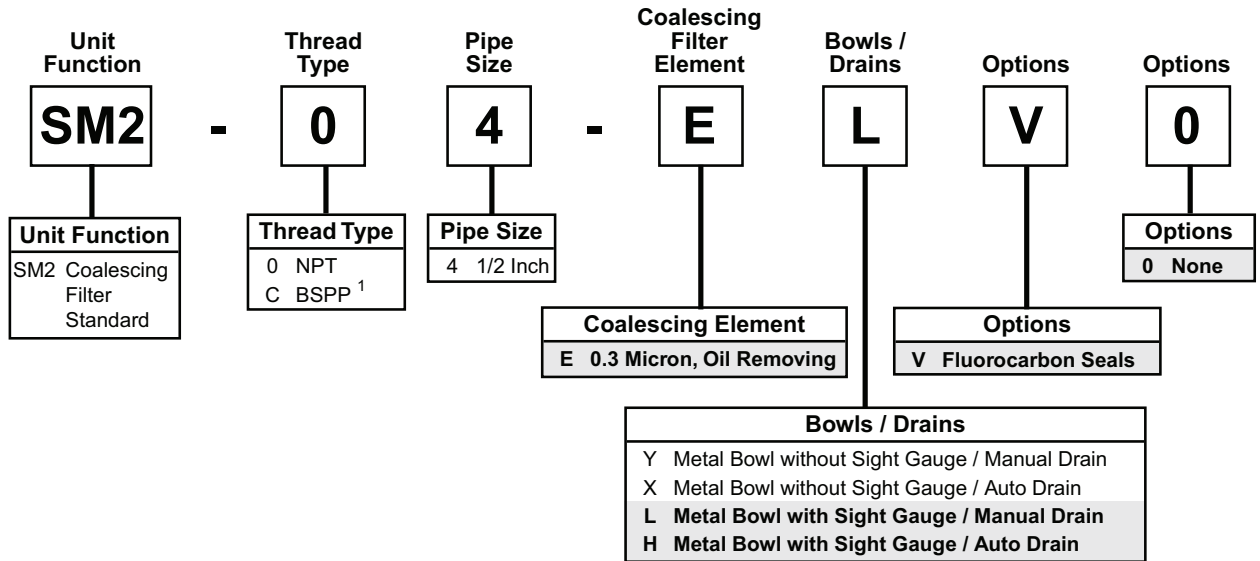
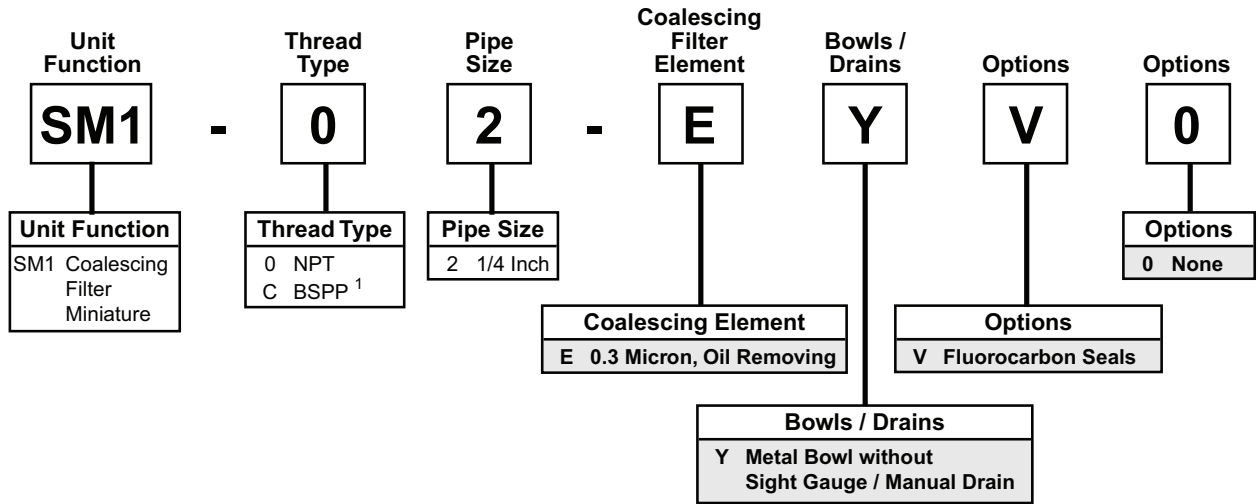


# Notes

E



# Coalescing Filter Numbering System    = "Most Popular"

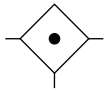


<sup>1</sup> ISO, R228 (G Series)

**Note:** When selecting from the options columns, please enter letters in alphabetical order for positions 7, 8, and 9. For example:

**SM1 - 0 2 - E Y V 0**

# Coalescing Filter – Miniature SM1

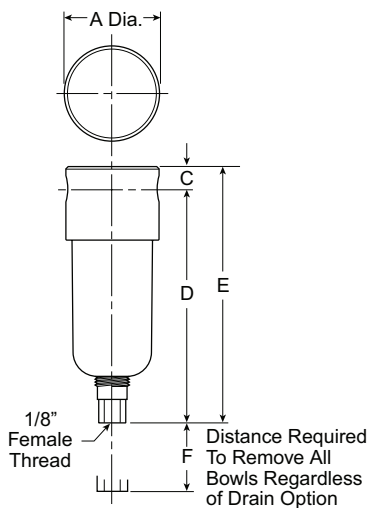


**SM1-02-EYV0**

## Features

- Stainless Steel Construction Handles Most Corrosive Environments
- Meets NACE Specifications MR-01-75/ISO 15156
- 1/8" Female Threaded Drain
- High Flow: 1/4" - 16 SCFM<sup>§</sup>

<sup>§</sup>SCFM = Standard cubic feet per minute at 90 PSIG inlet and 5 PSIG pressure drop.



## Dimensions

Models	Inches (mm)	A	C	D	E	F
Miniature Unit SM1-02-XXXX		1.57 (40)	0.31 (8)	3.69 (94)	4.00 (102)	1.58 (40)

= "Most Popular"

## Specifications

Flow Capacity*	Port Size	0.3 Micron
	1/4	16 SCFM
Bowl Capacity		1.0 Ounces
Filter Rating		0.3 Micron
Port Threads		1/4 Inch

### Pressure & Temperature Ratings –

Metal Bowl – 0 to 300 PSIG (0 to 20.7 bar)  
0°F to 180°F (-18°C to 82°C)

Auto Pulse Drain – 10 to 175 PSIG (0.7 to 12 bar)  
32°F to 150°F (0°C to 66°C)

**Note: Air must be dry enough to avoid ice formation at temperatures below 32°F (0°C).**

Useful Retention**	0.4 Ounce
Weight	0.6 lb. (0.27 kg)

\* Inlet pressure 90 PSIG (6.2 bar) and 5 PSID (0.3 bar) pressure drop.

\*\* Useful Retention refers to volume below the quiet zone baffle.

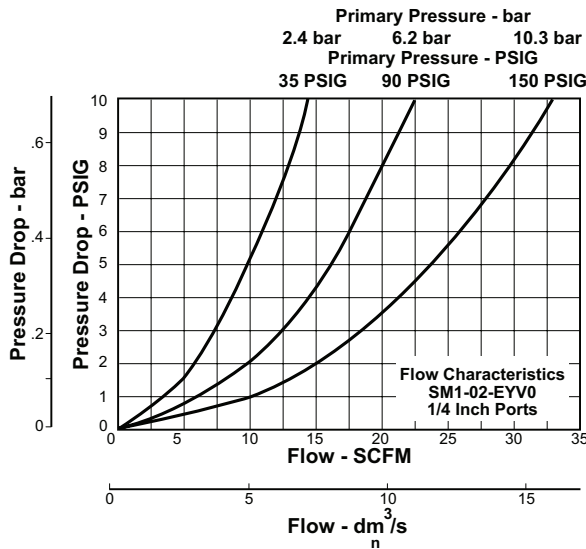
## Materials of Construction

Body	316 Stainless Steel
Bowl	316 Stainless Steel
Drain (Manual)	316 Stainless Steel
Element Holder	Acetal
Filter Element	Borosilicate Fiber
Seals	Fluorocarbon

= "Most Popular"

**SM1 Filter Kits & Accessories**

- Filter Element Kits – 0.3 Micron..... SRP-96-005
- Manual Drain –
  - Small (Old) ..... SRP-96-008
  - Large (New) ..... SAP05481
- Pipe Nipple – 1/4" 316 Stainless Steel ..... SRP-96-009



**Ordering Information**

Model Type	Port Size	Model Number
Manual Drain	1/4	SM1-02-EYV0

Options - To order an option supplied with the unit model, add the appropriate coded suffix letter in the designated position of the model number.

# Coalescing Filter – Standard SM2

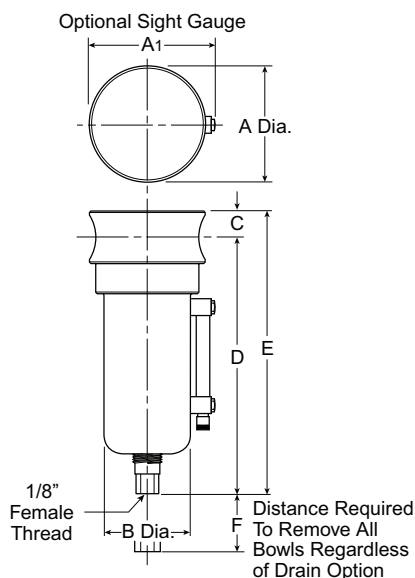


**SM2-04-ELV0**

## Features

- Stainless Steel Construction Handles Most Corrosive Environments
- Meets NACE Specifications MR-01-75/ISO 15156
- 1/8" Female Threaded Drain
- High Flow: 1/2" - 45 SCFM<sup>§</sup>

<sup>§</sup>SCFM = Standard cubic feet per minute at 90 PSIG inlet and 5 PSIG pressure drop.



## Dimensions

Models	Inches (mm)	A	A <sub>1</sub>	B	C	D	E	F
Miniature Unit SM2-04-XXXX		2.38 (60)	2.50 (64)	1.75 (44)	0.56 (14)	5.00 (127)	5.56 (141)	2.12 (54)

= "Most Popular"

## Specifications

Flow Capacity*	Port Size	0.3 Micron 46 SCFM
Bowl Capacity		4.0 Ounces
Filter Rating		0.3 Micron
Port Threads		1/2 Inch
Pressure & Temperature Ratings –		
Metal Bowl –		0 to 300 PSIG (0 to 20.7 bar) 0°F to 180°F (-18°C to 82°C)
Metal Bowl with Sight Gauge –		0 to 250 PSIG (0 to 17.2 bar) 0°F to 150°F (-18°C to 66°C)
Automatic Float Drain –		0 to 175 PSIG (0 to 12 bar) 32°F to 150°F (0°C to 66°C)

**Note: Air must be dry enough to avoid ice formation at temperatures below 32°F (0°C).**

Useful Retention**	1.7 Ounce
Weight	1.9 lb. (0.85 kg)

\* Inlet pressure 90 PSIG (6.2 bar) and 5 PSID (0.3 bar) pressure drop.  
\*\* Useful Retention refers to volume below the quiet zone baffle.

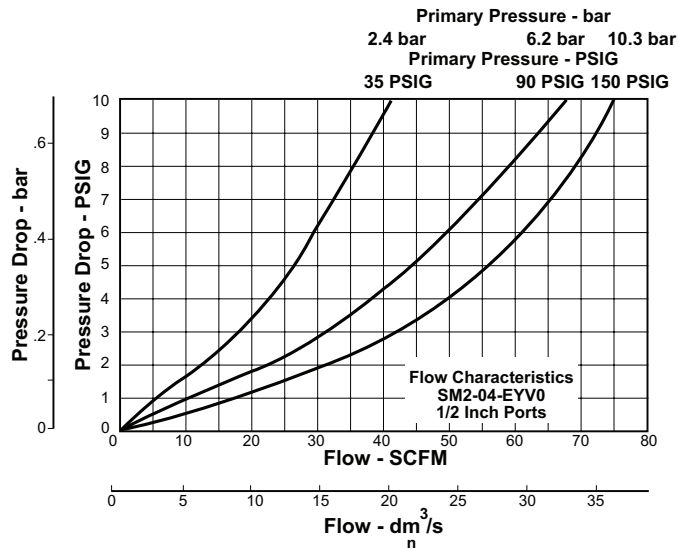
## Materials of Construction

Body	316 Stainless Steel
Bowl	316 Stainless Steel
Drain	316 Stainless Steel
Element Holder	Acetal
Filter Element	Borosilicate Fiber
Seals	Fluorocarbon
Sight Gauge	Isoplast

= "Most Popular"

### SM2 Filter Kits & Accessories

- Drain Kit –
  - Automatic Drain ..... SRP-96-007
- Manual Drain –
  - Small (Old) ..... SRP-96-008
  - Large (New) ..... SAP05481
- Filter Element Kits – 0.3 Micron..... SRP-96-006
- Liquid Level Sight Gauge Kit ..... SRP-96-026
- Pipe Nipple – 1/2" 316 Stainless Steel.....SRP-96-010



### Ordering Information

Model Type	Port Size	Model Number	Model Number
Manual Drain	1/2	SM2-04-ELV0	—
Automatic Drain	1/2	—	SM2-04-EHV0

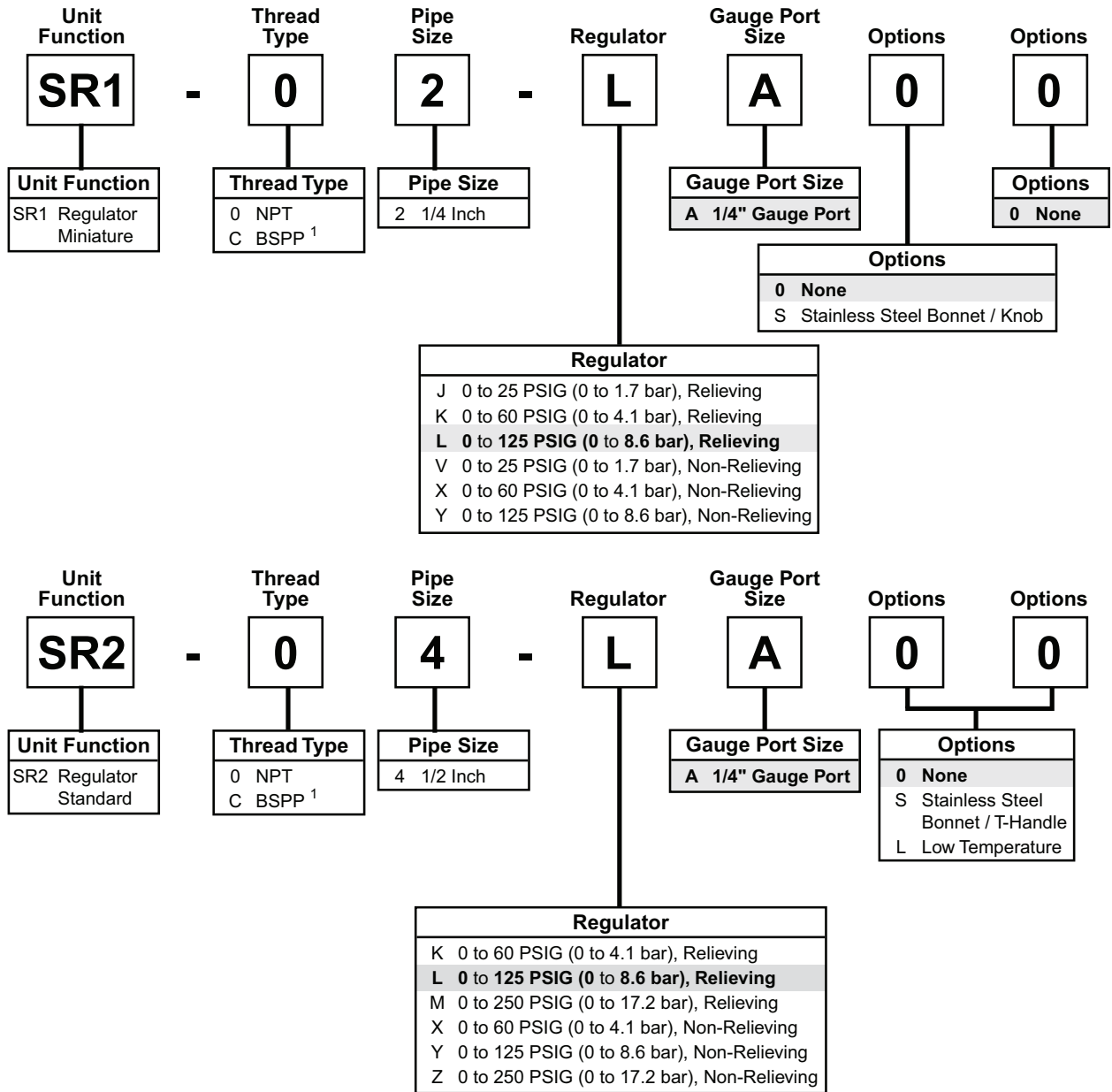
Options - To order an option supplied with the unit model, add the appropriate coded suffix letter in the designated position of the model number.

# Notes

E

# Regulator Numbering System

   = "Most Popular"



<sup>1</sup> ISO, R228 (G Series)

**Note:** When selecting from the options columns, please enter letters in alphabetical order for positions 7, 8, and 9. For example:

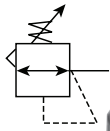
**SR1 - 0 2 - L A 0 0**

**E**

# Regulator – Miniature

## SR1

= "Most Popular"



**SR1-02-LA00**



**SR1-02-LAS0**

### Features

- Stainless Steel Construction Handles Most Corrosive Environments
- Large Diaphragm to Valve Area Ratio for Precise Regulation and High Flow Capacity
- Meets NACE Specifications MR-01-75/ISO 15156
- High Flow: 1/4" – 12 SCFM<sup>§</sup>

<sup>§</sup> SCFM = Standard cubic feet per minute at 100 PSIG inlet, 75 PSIG no flow secondary setting and 15 PSIG pressure drop.

### Specifications

Flow Capacity*	Port Size	12 SCFM
	1/4	
Gauge Port		1/4 Inch
Port Threads		1/4 Inch

Pressure & Temperature Ratings –		
SR1-02-LA00	300 PSIG Max (20.7 bar)	0°F to 150°F (-18°C to 66°C)
SR1-02-LAS0	300 PSIG Max (20.7 bar)	0°F to 180°F (-18°C to 82°C)

**Note: Air must be dry enough to avoid ice formation at temperatures below 32°F (0°C).**

Weight	0.5 lb. (0.23 kg)
--------	-------------------

\* Inlet pressure 100 PSIG (6.9 bar) and 75 PSIG (5.2 bar) no flow secondary setting and 25% pressure drop.

### Materials of Construction

Adjustment Mechanism / Springs	316 Stainless Steel
Adjusting Knob (SR1-02-LAS0)	316 Stainless Steel
Adjusting Knob (SR1-02-LA00)	Polypropylene
Body	316 Stainless Steel
Bonnet (SR1-02-LAS0)	316 Stainless Steel
Bonnet (SR1-02-LA00)	Acetal
Bottom Plug	316 Stainless Steel
Poppet	316 Stainless Steel
Seals	Fluorocarbon

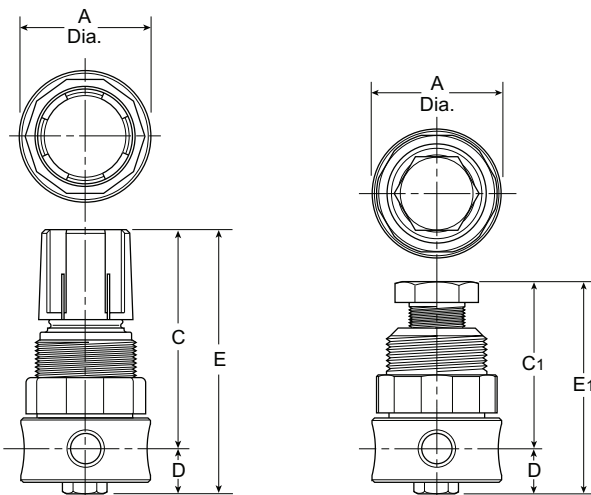
### WARNING

**Product rupture can cause serious injury.  
Do not connect regulator to bottled gas.  
Do not exceed maximum primary pressure rating.**

### CAUTION:

**REGULATOR PRESSURE ADJUSTMENT** – The working range of knob adjustment is designed to permit outlet pressures within their full range. Pressure adjustment beyond this range is also possible because the knob is not a limiting device. This is a common characteristic of most industrial regulators, and limiting devices may be obtained only by special design.

For best performance, regulated pressure should always be set by increasing the pressure up to the desired setting.



### Dimensions

Models	Inches (mm)	A	C	C <sub>1</sub>	D	E	E <sub>1</sub>
Miniature Unit SR1-02-XXXX		1.56 (40)	2.56 (65)	2.17 (55)	0.50 (13)	3.06 (78)	2.67 (68)

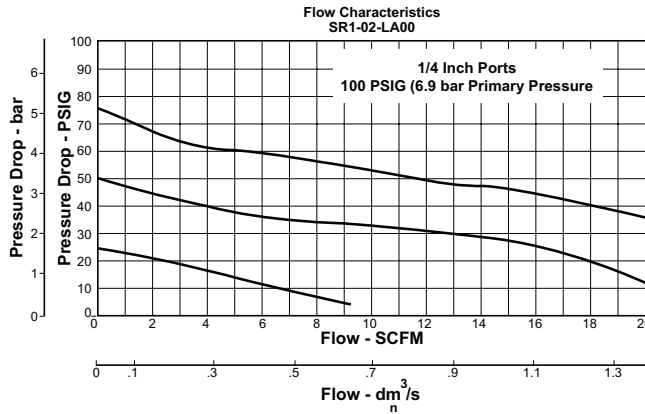


= "Most Popular"

### SR1 Regulator Kits & Accessories

- Bonnet Kit SR1-02-LA00 (Knob Included) .....SRP-96-017
- Bonnet Kit SR1-02-LAS0 .....CKR354YSS
- Gauge (Stainless) –  
 160 PSIG (0 to 1100 kPa), 1-1/2" Face .....K4515N14160SS
- Mounting Bracket (Stainless)..... 161X57-SS
- Panel Mount Nut –  
 Stainless .....SRP-96-019  
 Plastic ..... R05X51-P
- Pipe Nipple –  
 1/4" 316 Stainless Steel ..... SRP-96-009
- Service Kit –  
 Relieving .....SRP-96-013  
 Non-Relieving .....SRP-96-014
- Springs –  
 0-25 PSIG Range .....SPR-375-2-SS  
 0-60 PSIG Range ..... SPR-376-1-SS  
 0-125 PSIG Range ..... SPR-377-1-SS

**Note:** Order pressure gauge and panel mount nut separately.  
**Note:** 1.25" dia. (32mm) hole required for panel mounting  
 (order panel nut separately).




### Ordering Information

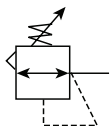
Model Type	Port Size	0 to 125 PSIG (0 to 8.6 bar)	0 to 25 PSIG (0 to 1.7 bar)	0 to 60 PSIG (0 to 4.1 bar)
Relieving	1/4	SR1-02-LA00	SR1-02-JA00	SR1-02-KA00
Non-Relieving	1/4	SR1-02-YA00	SR1-02-VA00	SR1-02-XA00

Options - To order an option supplied with the unit model, add the appropriate coded suffix letter in the designated position of the model number.



# Regulator – Standard SR2

 = "Most Popular"



**SR2-04-LA00**



**SR2-04-LAS0**

## Features

- Stainless Steel Construction Handles Most Corrosive Environments
- Large Diaphragm to Valve Area Ratio for Precise Regulation and High Flow Capacity
- Meets NACE Specifications MR-01-75/ISO 15156
- Low Temperature Version Available
- High Flow: 1/2" – 80 SCFM<sup>§</sup>

<sup>§</sup> SCFM = Standard cubic feet per minute at 100 PSIG inlet, 75 PSIG no flow secondary setting and 15 PSIG pressure drop.

## Specifications

Flow Capacity*	Port Size	80 SCFM
	1/2	
Gauge Port		1/4 Inch
Port Threads		1/2 Inch

Pressure & Temperature Ratings –

SR2-04-LA00 –	300 PSIG Max (20.7 bar)
	0°F to 150°F (-18°C to 66°C)
SR2-04-LAS0 –	300 PSIG Max (20.7 bar)
	0°F to 180°F (-18°C to 82°C)

Option "L" Minimum Operating Temperature<sup>†</sup> – -40°F (-40°C)

Note: Air must be dry enough to avoid ice formation at temperatures below 32°F (0°C).

Weight	1.79 lb. (0.81 kg)
--------	--------------------

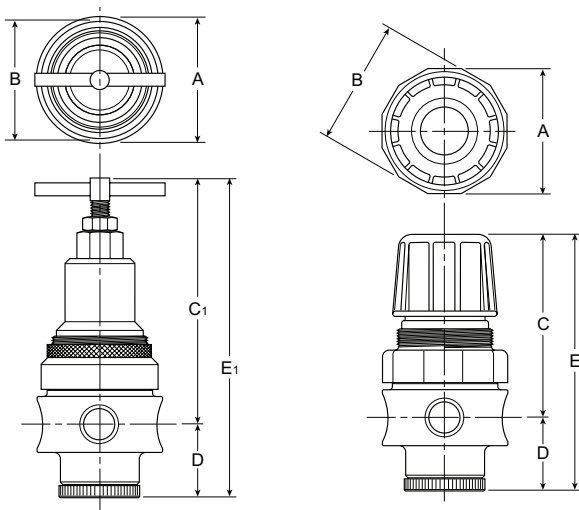
\* Inlet pressure 100 PSIG (6.9 bar) and 75 PSIG (5.2 bar) no flow secondary setting and 25% pressure drop.

<sup>†</sup> Note: "Low Temperature" option is intended for applications where the ambient temperature may be down to -40° C/F. Air supply must be free of moisture to prevent ice formation and malfunction of units. These units contain EPDM seals. Make sure any oils in the airstream are compatible.

## Materials of Construction

Adjustment Mechanism / Springs	316 Stainless Steel
Body	316 Stainless Steel
Bonnet / Tee Handle (SR2-04-LAS0)	316 Stainless Steel
Bonnet / Knob (SR2-04-LA00)	Acetal
Bottom Plug	316 Stainless Steel
Poppet	316 Stainless Steel
Seals	Fluorocarbon

**E**



## Dimensions

Models	Inches (mm)	A	B	C	C1	D	E	E1
Miniature Unit SR2-04-XXXX		2.34 (60)	2.43 (62)	3.59 (91)	4.70 (119)	1.38 (35)	4.97 (126)	6.08 (154)

**⚠ WARNING**

**Product rupture can cause serious injury.**  
**Do not connect regulator to bottled gas.**  
**Do not exceed maximum primary pressure rating.**

## CAUTION:

**REGULATOR PRESSURE ADJUSTMENT** – The working range of knob adjustment is designed to permit outlet pressures within their full range. Pressure adjustment beyond this range is also possible because the knob is not a limiting device. This is a common characteristic of most industrial regulators, and limiting devices may be obtained only by special design.

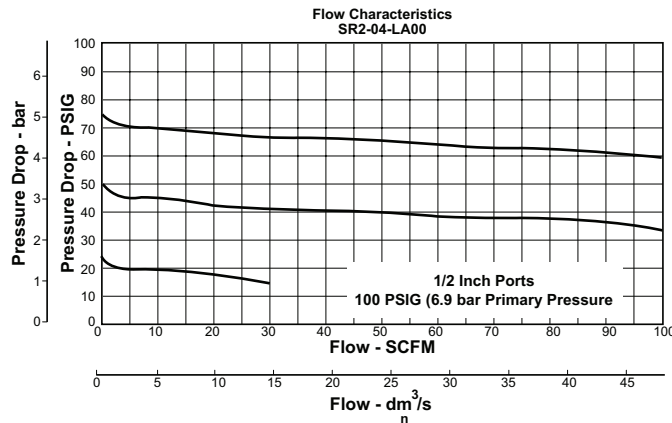
For best performance, regulated pressure should always be set by increasing the pressure up to the desired setting.

= "Most Popular"

### SR2 Regulator Kits & Accessories

- Bonnet Kit SR2-04-LA00 (Knob) .....SRP-96-018
- Bonnet Kit SR2-04-LAS0 (T-Handle) .....CKR11YSS
- Gauge (Stainless) –  
 160 PSIG (0 to 1100 kPa), 2" Face ..... K4520N14160SS
- Mounting Bracket (Stainless)..... R10Y57-SS
- Panel Mount Nut –  
 Stainless ..... SRP-96-020  
 Plastic .....R10X51-P
- Pipe Nipple –  
 1/2" 316 Stainless Steel .....SRP-96-010
- Service Kit –  
 Relieving .....SRP-96-011  
 Non-Relieving .....SRP-96-012
- Springs –  
 0-60 PSIG Range ..... SPR-388-1-SS  
 0-125 PSIG Range ..... SPR-389-1-SS  
 0-250 PSIG Range ..... SPR-390-1-SS

**Note:** Order pressure gauge and panel mount nut separately.  
**Note:** 1.75" dia. (44.5 mm) hole required for panel mounting (order panel nut separately).



### Ordering Information

Model Type	Port Size	0 to 125 PSIG (0 to 8.6 bar)	0 to 60 PSIG (0 to 4.1 bar)	0 to 250 PSIG (0 to 17.2 bar)
Relieving	1/2	SR2-04-LA00	SR2-04-KA00	SR2-04-MA00
Non-Relieving	1/2	SR2-04-YA00	SR2-04-XA00	SR2-04-ZA00

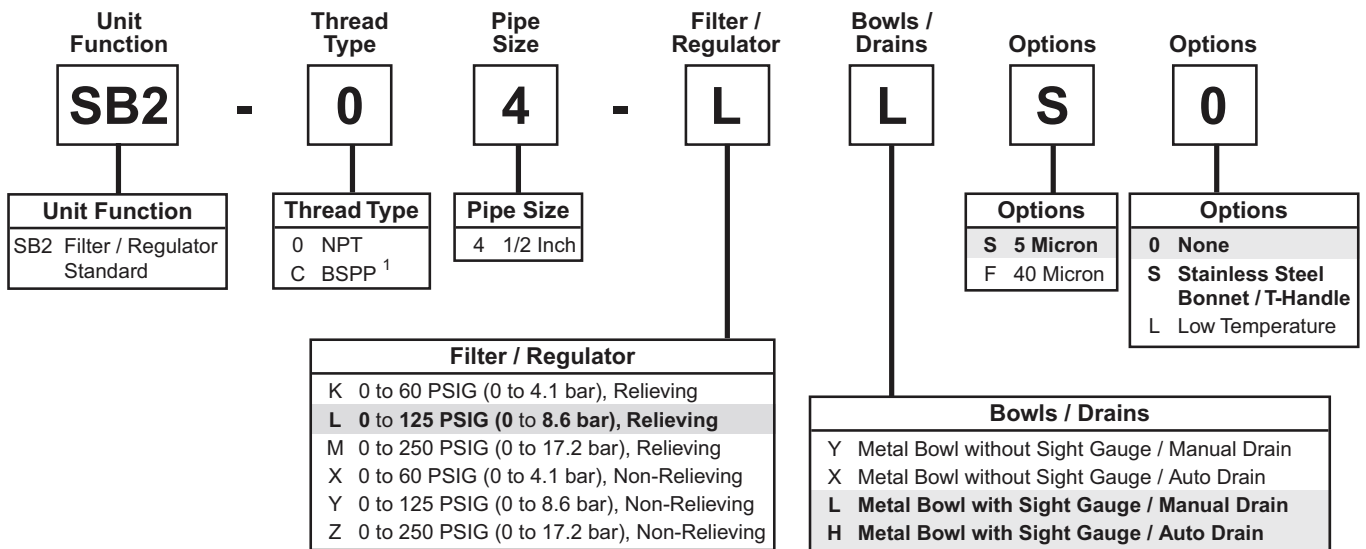
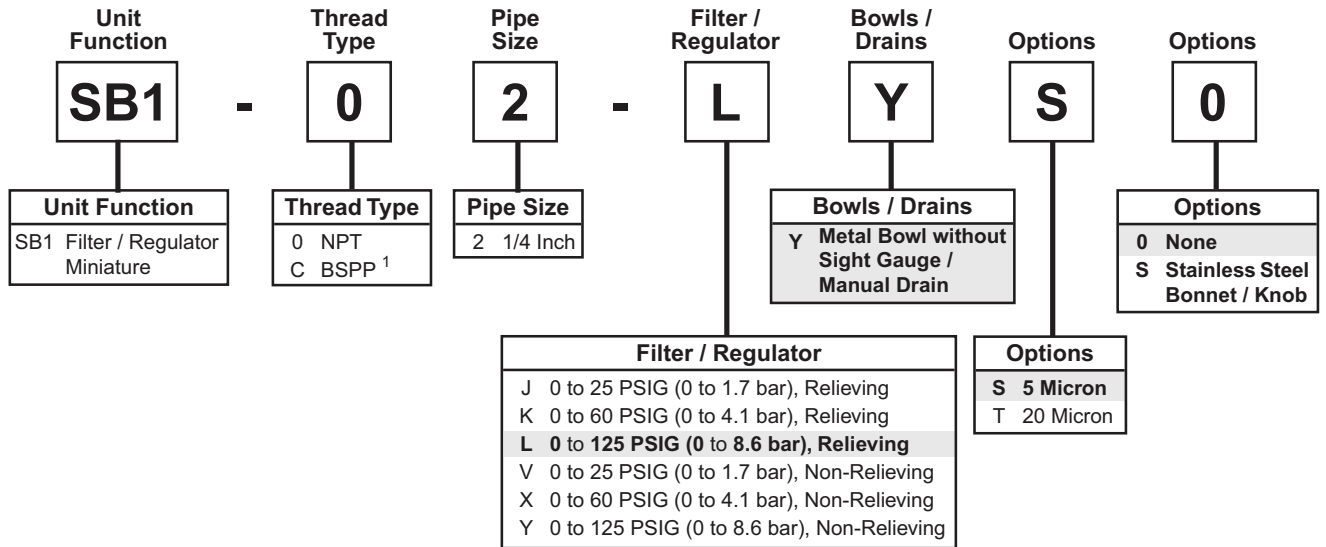
Options - To order an option supplied with the unit model, add the appropriate coded suffix letter in the designated position of the model number.



# Notes

E

# Filter / Regulator Numbering System    = "Most Popular"



<sup>1</sup> ISO, R228 (G Series)

"SB" Series Filters / Regulators, Type "A" 5 micron elements: All Wilkerson Type "A" 5 micron elements meet or exceed ISO Class 3 for maximum particle size and concentration of solid contaminants.

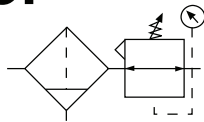
NOTE: All classes above refer to International Standards Organization (ISO) standard 8573-1, pertaining to maximum particle size and concentration of solid contaminants, and maximum oil content.

Note: When selecting from the options columns, please enter letters in alphabetical order for positions 7, 8, and 9. For example:

**SB1 - 0 2 - L Y S 0**



# Filter / Regulator – Miniature SB1



**SB1-02-LYS0**



**SB1-02-LYSS**

## Features

- Stainless Steel Construction Handles Most Corrosive Environments
- Large Diaphragm to Valve Area Ratio for Precise Regulation and High Flow Capacity
- 1/8" Female Threaded Drain
- Meets NACE Specifications MR-01-75/ISO 15156.
- High Flow: 1/4" – 12 SCFM<sup>§</sup>

<sup>§</sup> SCFM = Standard cubic feet per minute at 100 PSIG inlet, 75 PSIG no flow secondary setting and 15 PSIG pressure drop.

= "Most Popular"

## Specifications

Flow Capacity*	Port Size	5 Micron
	1/4	12 SCFM
Bowl Capacity		1.0 Ounces
Filter Rating		5 Micron
Gauge Port		1/4 Inch
Port Threads		1/4 Inch

### Pressure & Temperature Ratings –

SB1-02-LYS0 –	300 PSIG Max (20.7 bar)
	0°F to 150°F (-18°C to 66°C)
SB1-02-LYSS –	300 PSIG Max (20.7 bar)
	0°F to 180°F (-18°C to 82°C)
Auto Pulse Drain –	10 to 175 PSIG (0.7 to 12 bar)
	32°F to 150°F (0°C to 66°C)

**Note: Air must be dry enough to avoid ice formation at temperatures below 32°F (0°C).**

Useful Retention **	0.4 Ounce
Weight	0.8 lb. (0.36 kg)

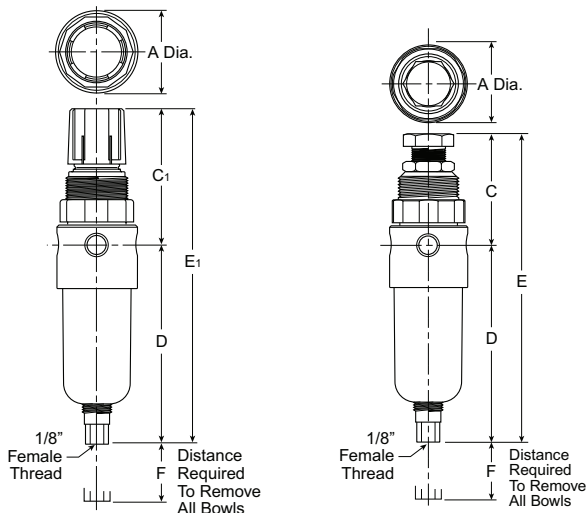
\* Inlet pressure 100 PSIG (6.9 bar) and 75 PSIG (5.2 bar) no flow secondary setting and 25% pressure drop.

\*\* Useful Retention refers to volume below the quiet zone baffle.

## Materials of Construction

Adjustment Mechanism / Springs	316 Stainless Steel
Body	316 Stainless Steel
Bonnet (SB1-02-LYS0)	Acetal
Bonnet (SB1-02-LYSS)	316 Stainless Steel
Bottom Plug	316 Stainless Steel
Knob (SB1-02-LYS0)	Polypropylene
Knob (SB1-02-LYSS)	316 Stainless Steel
Poppet	316 Stainless Steel
Seals	Fluorocarbon

**E**



## Dimensions

Models	Inches (mm)	A	C	C <sub>1</sub>	D	E	E <sub>1</sub>	F
Miniature Unit SB1-02-XXXX		1.56 (40)	2.17 (55)	2.63 (67)	3.63 (92)	5.80 (147)	6.26 (159)	1.58 (40)

## WARNING

**Product rupture can cause serious injury.  
Do not connect regulator to bottled gas.  
Do not exceed maximum primary pressure rating.**

## CAUTION:

**REGULATOR PRESSURE ADJUSTMENT** – The working range of knob adjustment is designed to permit outlet pressures within their full range. Pressure adjustment beyond this range is also possible because the knob is not a limiting device. This is a common characteristic of most industrial regulators, and limiting devices may be obtained only by special design.

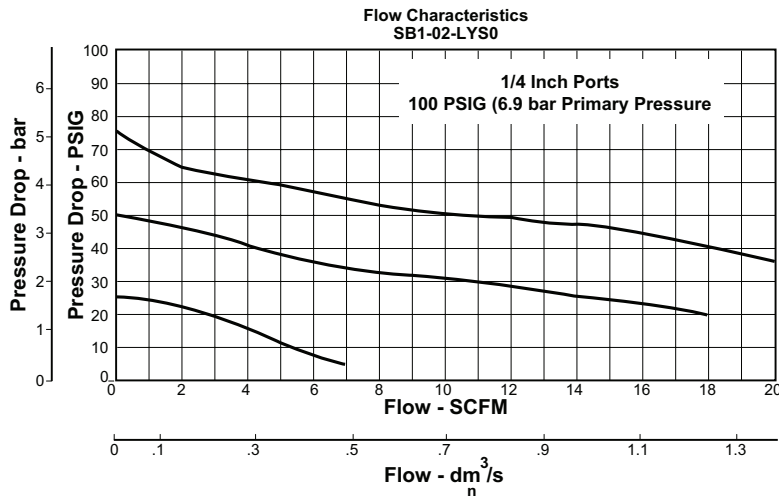
For best performance, regulated pressure should always be set by increasing the pressure up to the desired setting.

= "Most Popular"

### SB1 Regulator Kits & Accessories

- Bonnet Kit SB1-02-LYS0 (Knob Included) .....SRP-96-017
- Bonnet Kit SB1-02-LYSS (Knob Included) .....CKR354YSS
- Filter Element Kits –
  - Particulate (5 Micron)..... SRP-96-001
  - Particulate (20 Micron)..... SRP-96-002
- Gauge (Stainless) –
  - 160 PSIG (0 to 1100 kPa), 1-1/2" Face .....K4515N14160SS
- Manual Twist Drain ..... SRP-96-008
- Mounting Bracket (Stainless)..... 161X57-SS
- Panel Mount Nut –
  - Stainless .....SRP-96-019
  - Plastic ..... R05X51-P
- Pipe Nipple –
  - 1/4" 316 Stainless Steel ..... SRP-96-009
- Service Kit –
  - Relieving .....SRP-96-015
  - Non-Relieving .....SRP-96-016
- Springs –
  - 0-25 PSIG Range .....SPR-375-2-SS
  - 0-60 PSIG Range .....SPR-376-1-SS
  - 0-125 PSIG Range ..... SPR-377-1-SS

**Note:** Order pressure gauge and panel mount nut separately.  
**Note:** 1.25" dia. (32mm) hole required for panel mounting (order panel nut separately).



### Ordering Information

Model Type	Port Size	0 to 125 PSIG (0 to 8.6 bar)	0 to 25 PSIG (0 to 1.7 bar)	0 to 60 PSIG (0 to 4.1 bar)
Relieving	1/4	SB1-02-LYS0	SB1-02-JYS0	SB1-02-KYS0
Non-Relieving	1/4	SB1-02-YYS0	SB1-02-VYS0	SB1-02-XYS0

Options - To order an option supplied with the unit model, add the appropriate coded suffix letter in the designated position of the model number.

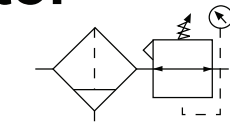


# Filter / Regulator – Standard SB2

= "Most Popular"



**SB2-04-LLS0**

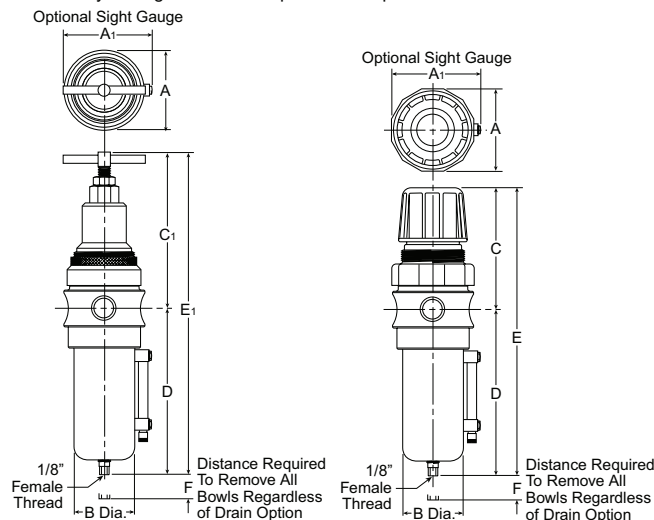


**SB2-04-LLSS**

## Features

- Stainless Steel Construction Handles Most Corrosive Environments
- Large Diaphragm to Valve Area Ratio for Precise Regulation and High Flow Capacity
- 1/8" Female Threaded Drain
- Meets NACE Specifications MR-01-75/ISO-15156
- Low Temperature Version Available
- High Flow: 1/2" – 72 SCFM<sup>§</sup>

<sup>§</sup> SCFM = Standard cubic feet per minute at 100 PSIG inlet, 75 PSIG no flow secondary setting and 15 PSIG pressure drop.



## Dimensions

Models	Inches (mm)	A	A1	B	C	C1	D	E	E1	F
Miniature Unit SB2-04-XXXX		2.34 (60)	2.50 (64)	1.75 (44)	3.59 (91)	4.70 (119)	5.00 (127)	8.59 (218)	9.70 (246)	2.12 (54)

## Specifications

Flow Capacity*	Port Size	5 Micron
	1/2	72 SCFM
Bowl Capacity		4.0 Ounces
Filter Rating		5 Micron
Gauge Port		1/4 Inch
Port Threads		1/2 Inch

### Pressure & Temperature Ratings –

SB2-04-LLS0 (Metal Bowl with or without Sight Gauge)–  
300 PSIG Max. (20.7 bar)  
0°F to 150°F (-18°C to 66°C)

SB2-04-LLSS (Metal Bowl without Sight Gauge)–  
300 PSIG Max. (20.7 bar)  
0°F to 180°F (-18°C to 82°C)

SB2-04-LLSS (Metal Bowl with Sight Gauge)–  
300 PSIG Max. (20.7 bar)  
0°F to 150°F (-18°C to 66°C)

Automatic Float Drain – 15 to 175 PSIG (1 to 12 bar)  
32°F to 150°F (0°C to 66°C)

**Note: Air must be dry enough to avoid ice formation at temperatures below 32°F (0°C).**

Useful Retention **	1.7 Ounce
Weight	2.42 lb. (1.09 kg)

\* Inlet pressure 100 PSIG (6.9 bar) and 75 PSIG (5.2 bar) no flow secondary setting and 25% pressure drop.

\*\* Useful Retention refers to volume below the quiet zone baffle.

## Materials of Construction

Adjustment Mechanism / Springs	316 Stainless Steel
Body	316 Stainless Steel
Bonnet / Knob (SB2-04-LYS0)	Acetal
Bonnet / Tee Handle (SB2-04-LLSS)	316 Stainless Steel
Bottom Plug	316 Stainless Steel
Poppet	316 Stainless Steel
Seals	Fluorocarbon
Sight Gauge	Isoplast

## ⚠ WARNING

**Product rupture can cause serious injury.  
Do not connect regulator to bottled gas.  
Do not exceed maximum primary pressure rating.**

## CAUTION:

**REGULATOR PRESSURE ADJUSTMENT** – The working range of knob adjustment is designed to permit outlet pressures within their full range. Pressure adjustment beyond this range is also possible because the knob is not a limiting device. This is a common characteristic of most industrial regulators, and limiting devices may be obtained only by special design.

For best performance, regulated pressure should always be set by increasing the pressure up to the desired setting.

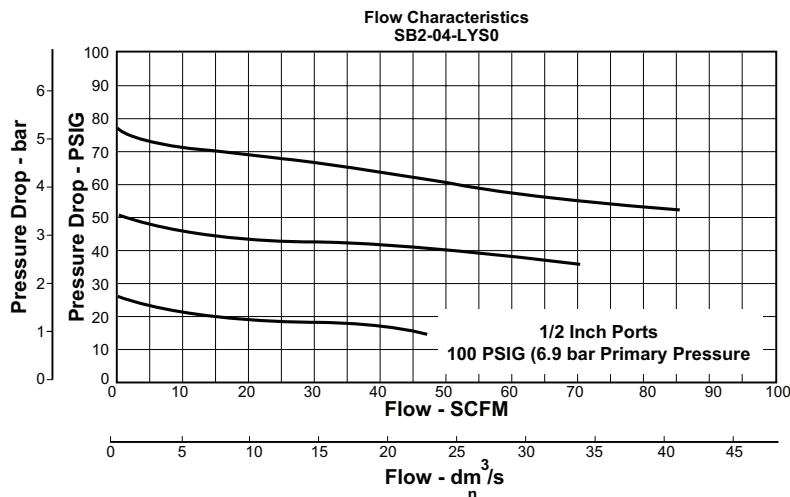


= "Most Popular"

### SB2 Regulator Kits & Accessories

- Bonnet Kit SB2-04-LLS0 (Knob) .....SRP-96-018
- Bonnet Kit SB2-04-LLSS (T-Handle).....CKR11YSS
- Drain Kit –
  - Automatic Float Drain..... SRP-96-007
  - Manual Twist Drain..... SRP-96-008
- Filter Element Kits –
  - Particulate (5 Micron)..... SRP-96-003
  - Particulate (40 Micron)..... SRP-96-004
- Gauge (Stainless) –
  - 160 PSIG (0 to 1100 kPa), 2" Face ..... K4520N14160SS
- Liquid Level Sight Gauge Kit ..... SRP-96-026
- Mounting Bracket (Stainless)..... R10Y57-SS
- Panel Mount Nut –
  - Stainless ..... SRP-96-020
  - Plastic .....R10X51-P
- Pipe Nipple –
  - 1/2" 316 Stainless Steel .....SRP-96-010
- Service Kit –
  - Relieving..... SRP-96-011
  - Non-Relieving.....SRP-96-012
- Springs –
  - 0-60 PSIG Range.....SPR-388-1-SS
  - 0-125 PSIG Range .....SPR-389-1-SS
  - 0-250 PSIG Range.....SPR-390-1-SS

**Note:** Order pressure gauge and panel mount nut separately.  
**Note:** 1.75" dia. (44.5 mm) hole required for panel mounting (order panel nut separately).



### Ordering Information

Model Type	Port Size	0 to 125 PSIG (0 to 8.6 bar)	0 to 60 PSIG (0 to 4.1 bar)	0 to 250 PSIG (0 to 17.2 bar)
Relieving	1/2	SB2-04-LLS0	SB2-04-KYS0	SB2-04-MYS0
Non-Relieving	1/2	SB2-04-YSY0	SB2-04-XYS0	SB2-04-ZYS0

Options - To order an option supplied with the unit model, add the appropriate coded suffix letter in the designated position of the model number.

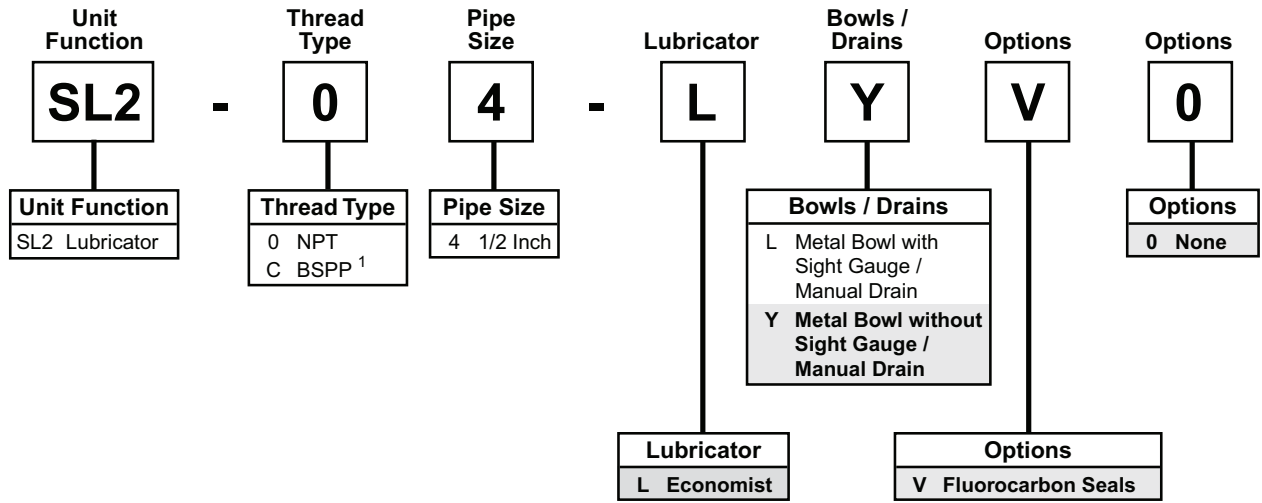


# Notes

E

# Lubricator Numbering System

   = "Most Popular"



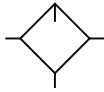
<sup>1</sup> ISO, R228 (G Series)

**Note:** When selecting from the options columns, please enter letters in alphabetical order for positions 7, 8, and 9. For example:

**SL2 - 0 2 - L L V 0**

**E**

# Lubricator – Standard SL2

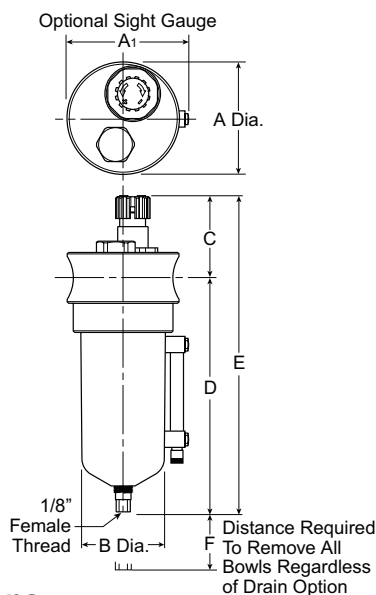


**SL2-04-LYV0**

## Features

- Stainless Steel Construction Handles Most Corrosive Environments
- 1/8" Female Threaded Drain
- Fillable Under Pressure
- Meets NACE Specifications MR-01-75/ISO 15156
- High Flow: 1/2" - 100 SCFM<sup>§</sup>

<sup>§</sup> SCFM = Standard cubic feet per minute at 90 PSIG inlet, and 5 PSIG pressure drop.



## Dimensions

Models	Inches (mm)	A	A <sub>1</sub>	B	C	D	E	F
Miniature Unit SL2-04-XXXX		2.36 (60)	2.52 (64)	1.73 (44)	2.17 (55)	5.46 (139)	7.62 (194)	3.50 (89)

= "Most Popular"

## Specifications

Flow Capacity*	Port Size	
	1/2	100 SCFM
Bowl Capacity		4.0 Ounces
Port Threads		1/2 Inch

### Pressure & Temperature Ratings –

Metal Bowl – 0 to 300 PSIG (0 to 20.7 bar)  
0°F to 150°F (-18°C to 66°C)

Metal Bowl with Sight Gauge – 0 to 250 PSIG (0 to 17.2 bar)  
0°F to 150°F (-18°C to 66°C)

**Note: Air must be dry enough to avoid ice formation at temperatures below 32°F (0°C).**

Useful Retention **	4 Ounces
Weight	1.9 lb. (0.85 kg)

\* Inlet pressure 90 PSIG (6.2 bar) and 5 PSIG (0.3 bar) pressure drop.

\*\*Useful Retention refers to volume below the quiet zone baffle.

## Materials of Construction

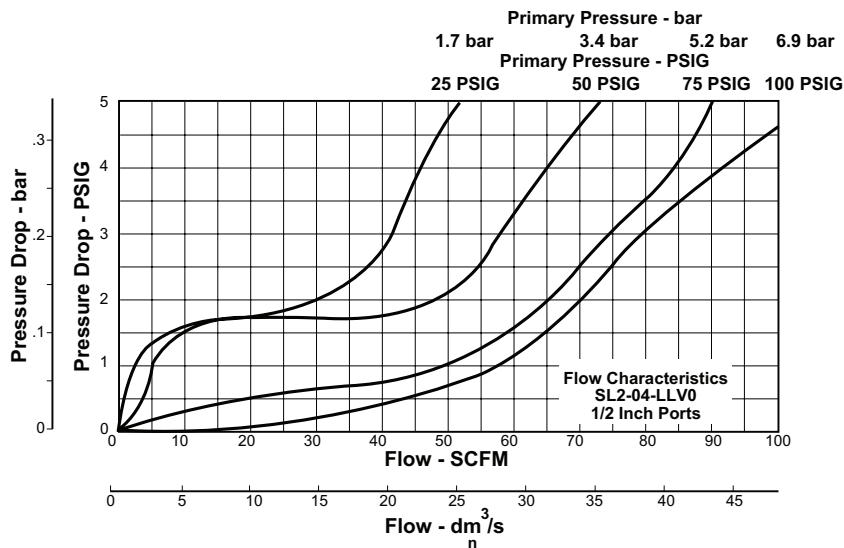
Body	316 Stainless Steel
Bowl	316 Stainless Steel
Dip Tube	316 Stainless Steel
Drain	316 Stainless Steel
Fill Plug	316 Stainless Steel
Seals	Fluorocarbon
Sight Dome	Nylon
Sight Gauge	Isoplast

**E**

= "Most Popular"

### SL2 Filter Kits & Accessories

- Drain Kit –
  - Manual Twist Drain..... SRP-96-008
- Liquid Level Sight and Gauge Kit ..... SRP-96-026
- Pipe Nipple – 1/2" 316 Stainless Steel.....SRP-96-010
- Sight Dome / Metering Screw Kit –
  - Old ..... SRP-96-025
  - New Style Nylon ..... LRP-96-720



### Ordering Information

Model Type	Port Size	Model Number
Manual Drain	1/2	SL2-04-LYV0

Options - To order an option supplied with the unit model, add the appropriate coded suffix letter in the designated position of the model number.

