



Stainless Turbines GTRF

Pneumatic turbine vibrators made from non-rusting steel.

Properties

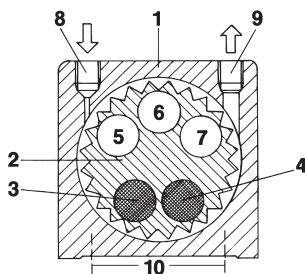
- Lubrication free
- Extremely quiet
- Heavy vibration by means of high speeds and eccentric working torques
- Nominal frequency 14'000 – 37'000 min⁻¹
- Centrifugal force 750 – 5'700 N
- Continuously variable (Compressed air)
- Can be used at temperatures up to 150 °C
- Resistant to extreme environmental conditions

Typical applications

- For foodstuffs and pharmaceuticals, FDA specifications
- Bunker emptying
- Screen filter
- Vibrating tables
- Preventing adhesions in pipelines and silos
- Moving of bulk materials

Construction

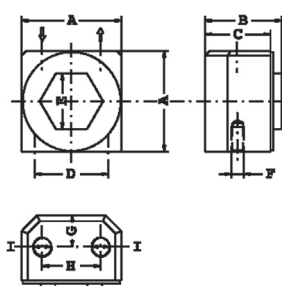
- Vibration from the centrifugal force of positive and negative unbalanced torques in the rotor.
- Rotor on two pre-lubricated and enclosed ball bearings arranged in pairs.
- Made from non-rusting steel 316 (4435.0) and lubricated with special grease for long life.



- 1 Stainless steel housing
- 2 Turbine wheel made from surface-hardened aluminium
- 3-4 high-density inserts: positive torque
- 5-7 openings for achieving negative torque
- 8 Air supply
- 9 Air outlet
- 10 Base mounting bores

Technical Data (in detail and with PSI, LBS, CF: www.findeva.com)

Model	Vibrations 1000 min ⁻¹		Centrifugal force N		Air consumption l min ⁻¹	
	2 bars	6 bars	2 bars	6 bars	2 bars	6 bars
GT-10-RF	27.0	37.0	750	2100	46	112
GT-16-RF	20.0	27.5	1700	3700	120	290
GT-25-RF	14.0	19.5	2500	5700	185	455



Sizes and weights in mm and g (more details and including inches at www.findeva.com)

Model	A	Width	C	D	E	F	G	Weight
GT-10-RF	49	38	32	36	27	M 6	1/8"	525
GT-16-RF	64	45	39	48	36	M 8	1/4"	1002
GT-25-RF	78	55	49	60	50	M 10	1/4"	1807